



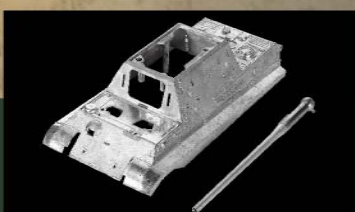
ENGINE PLUS SERIES

GERMAN HEAVY TANK DESTROYER SD.KFZ. 186, 'JAGDTIGER'

SCHWERE PANZERJAGER ABTEILUNG 653, NO.314, Germany, March 1945

The hefty JagdTiger weighed nearly 60 tons, and the conventional way to implement a suspension system utilized torsion bars, a very reliable design that could withstand more add-on weight. The downside, however, was the amount of space occupied inside the chassis compartment. Each torsion bar would be laid down one after another from the first to the last road wheel. The crew compartment flooring would be built upon these cylindrical bars and as one can imagine, the remaining space for the crew to carry ammunition, their daily-living possessions, and other equipment would be compromised.

Many engineers saw the inconvenient side of the torsion bar but few were bold enough to reject it until a visionary, a mechanical genius, Dr. Ferdinand Porsche from Austria designed the famous suspension for his Typ 100 model tank. Later commonly known as the "Porsche suspension", it changed many impressions towards suspension design. The "Porsche" suspension was mounted externally to the hull, each side installed with 3 bogie assemblies with 2 road wheels. The manufacturing cost according to certain historical references were believed to be lower than with a torsion bar system, and was also easier to repair. The suspension in fact resembles the character of a torsion bar design. Unfortunately through various field testing, reports indicated that the "Porsche" suspension was prone to breakage due to the heavy weight burden while driving off roads. As with any other great science innovation it required numerous developments before it became successful, nonetheless the "Porsche" suspension was indeed a remarkable design nearly 8 decades ago.



Die-cast hull top and CNC machined aluminum gun barrel



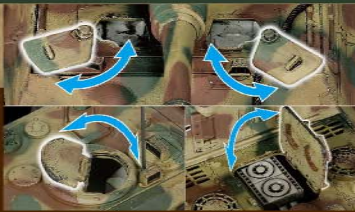
Bonus Maybach HL230 engine set atop a rotatable stand



Realistic landscape display and standard FOV series packaging (Large size)



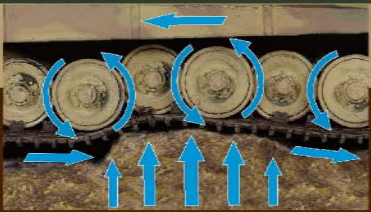
Hobby grade camouflage and weathering effects employing RAL-7028 (Dunkelgelb), RAL-6003 (Olivgrun) and RAL-8012 (Rotbraun)



Opening hatches



Realistic German camouflage pattern



Working suspension and free spinning roadwheels

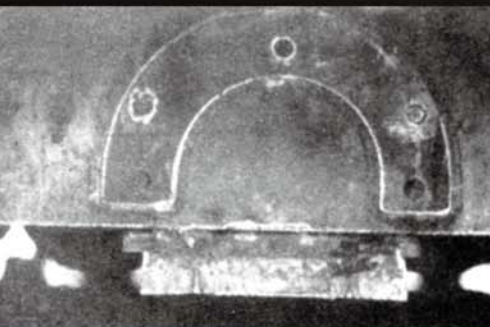
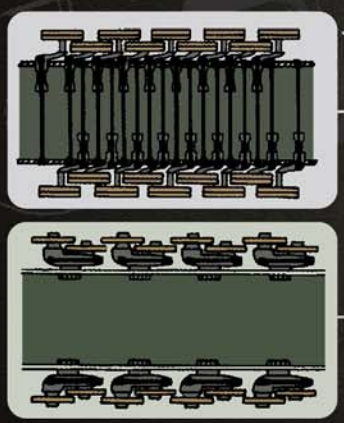


Realistic commander figure, antenna decoration and anti-aircraft MG-42 machine gun





GERMAN SD.KFZ.186 JAGDTIGER
SUSPENSION SYSTEM



WALTERSONS
Enthusiasm Beyond Compare™

