

1:35 SCALE

ITEM NO.:01588

Russian ASU-85 airborne self-propelled gun Mod.1956

俄罗斯ASU-85自行反坦克炮1956年型



READ BEFORE ASSEMBLY:

- Study and understand these instructions thoroughly before beginning assembly
- When needed, remove photo-etch parts carefully using a modeling knife or photo etch sprue cutter, being careful not to damage or lose small parts.
- Take extra care in handling photo etch parts in order to avoid injury
- Apply instant cement sparingly to photo etch parts where instructed
- Tools recommended(not included in kit):Plastic and instant cements, sprue cutters,long nose pliers,modeling knife, small files, tweezers, pin vise & scissors. Soft cloth and sandpaper will also assist in construction
- Glue and paint are not included in the kit. Use plastic cement and hobby paints only. Color guide for purchasing paint is included in the kit.

装配之前仔细阅读

- 小心用模型锉刀锉平所有零件表面的注射浇口。
- 小心用刀片切下蚀刻片零件，不要遗失小零件。
- 用强力快干胶水粘合蚀刻片零件和金属轴。过量快干胶水使用可能导致可动零件会粘住，小心涂胶。
- 取蚀刻片时应特别注意安全，防止利边划伤手指。
- 某些零件表面需贴水上贴纸，请选择在装配的同时进行。
- 推荐模型工具(自备)：胶水，水口剪刀，长咀钳，刀片，锉刀，镊子，钳，钻，剪刀，瞬间快干胶。
- 软布同砂纸同时也应该是必备工具。
- 请使用塑料胶水和油漆，模型内不含。



配重
Weight



使用强力胶
Cyanoacrylate glue



钻孔
Make hole



切除
Cut / Remove



贴纸
Decal



锉平
File / Sand



选择
Option



不涂胶水
No cement



弯曲
Bend

水贴纸的使用:

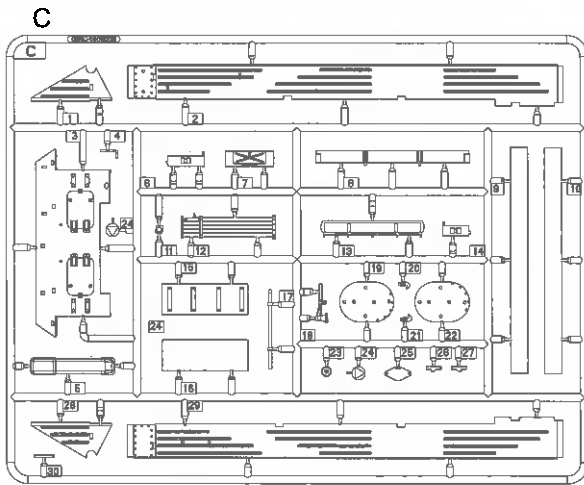
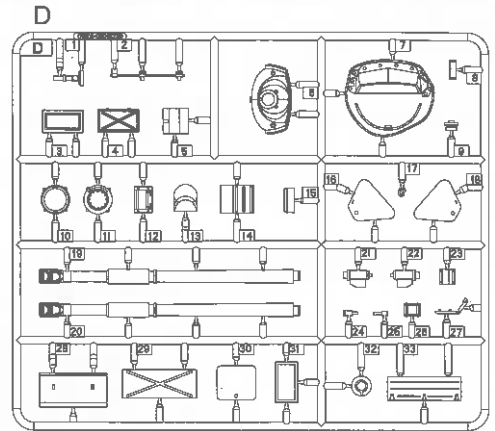
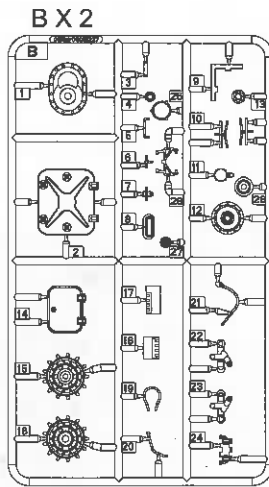
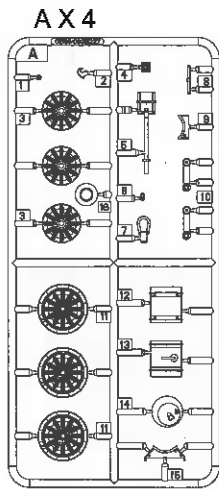
- 1.从水贴纸上剪下印花;
- 2.将印花放入温水中浸10秒，然后放在干净布上。
- 3.拿着印花纸板将印花移到模型上;
- 4.手指蘸水将印花移到适当的位置;
- 5.用软布轻压印花直至水干，气泡消失

DECAL APPLICATION

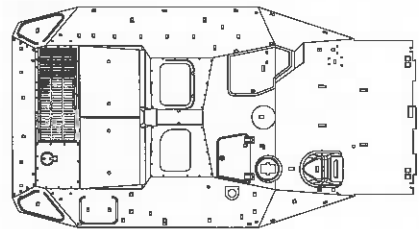
- 1.Cut decals from sheet as needed
- 2.Dip the decal in warm water for about 10 seconds and then place on soft clean cloth.
- 3.Hold the decal backing sheet edge and gently slide the decal onto the model in its proper position.

- 4.While still wet,decal can be adjusted for better fit on model by dampening it gently with your finger.
- 5.When placed in the proper position,gently press decal down with a soft cloth until excess water and air bubbles are gone.
- 6.Allow decal to dry completely before handling model

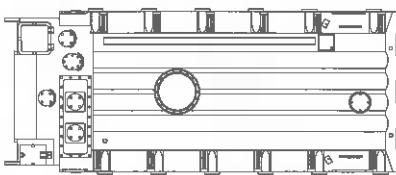
部品图 Parts



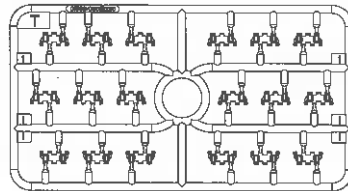
《车面》
Upper hull



《车底》
Lower hull



TX 11



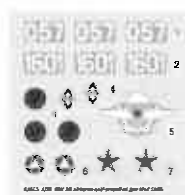
《透明片》
Transparent part



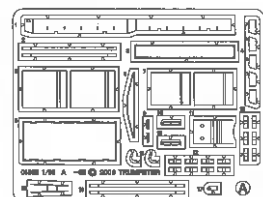
《铜线》 $\varnothing 0.8 \times 450\text{mm}$
Brass wire



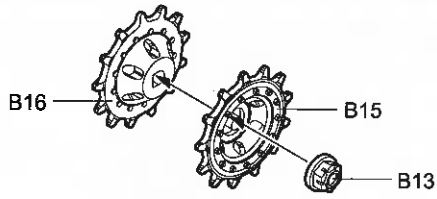
《水贴纸》
Decal



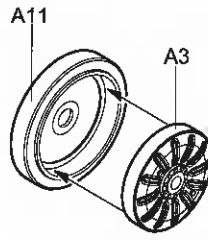
《蚀刻片-A》
PE-A



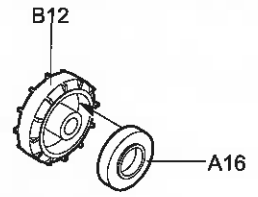
1 车轮组装
Wheels assembly



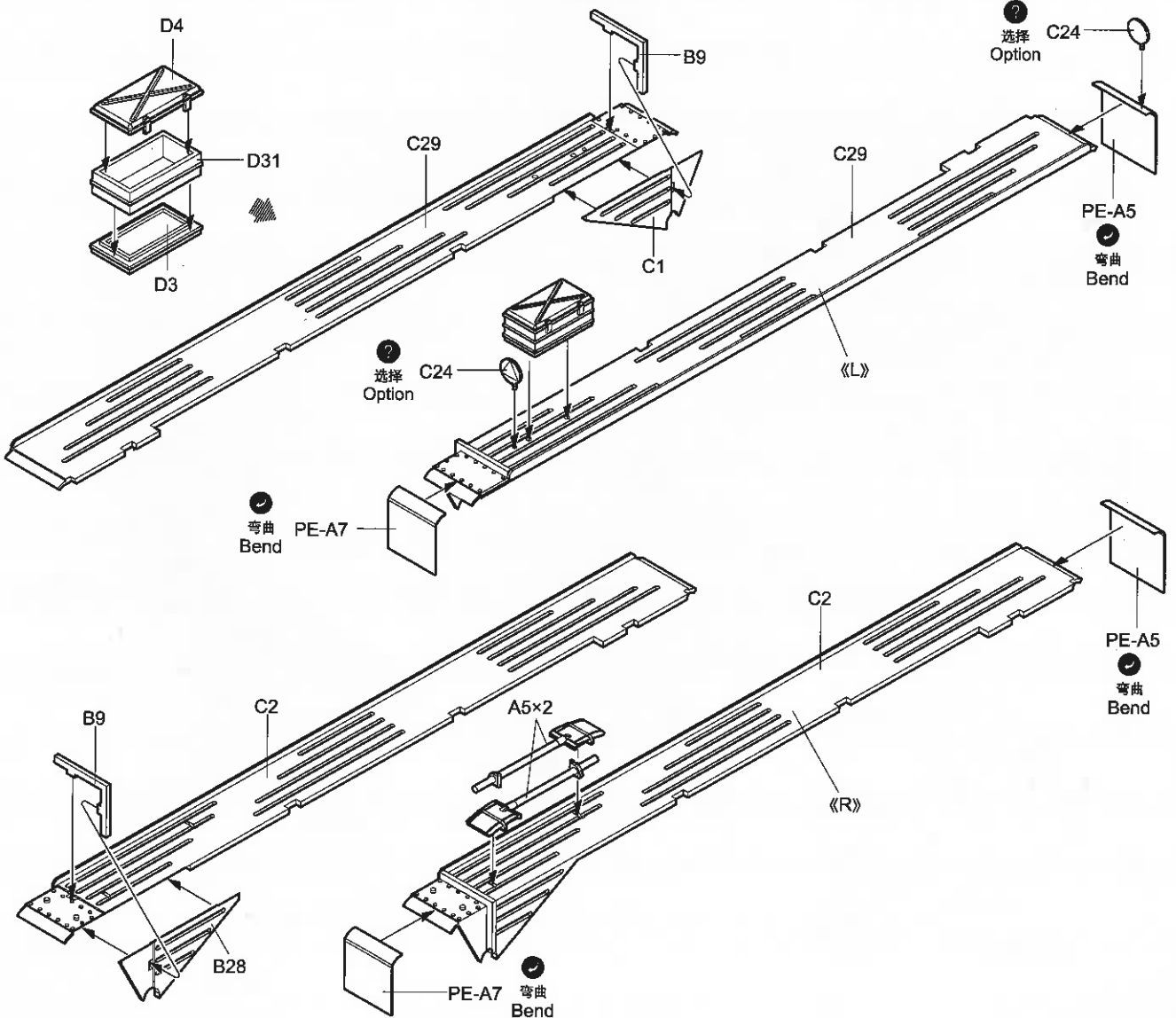
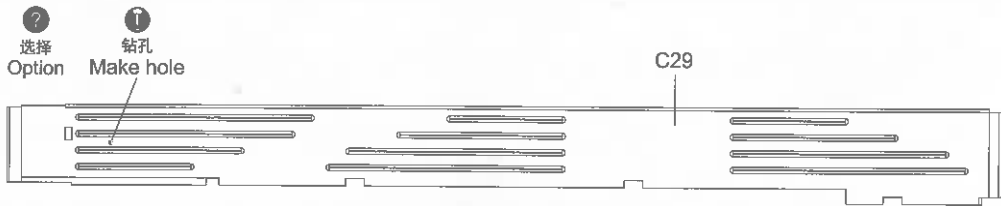
《主动轮》
Sprocket wheel
制作2组
Make two



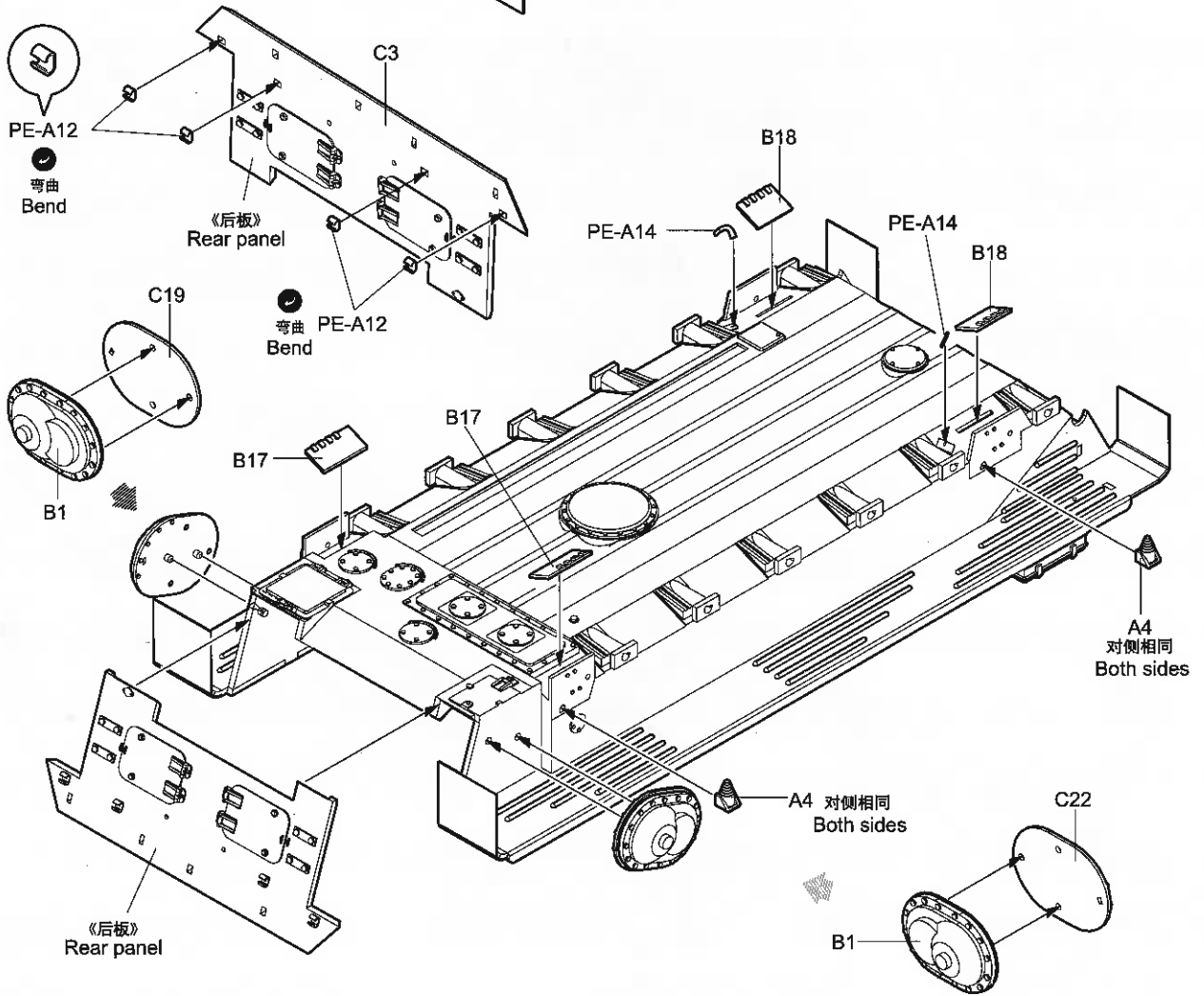
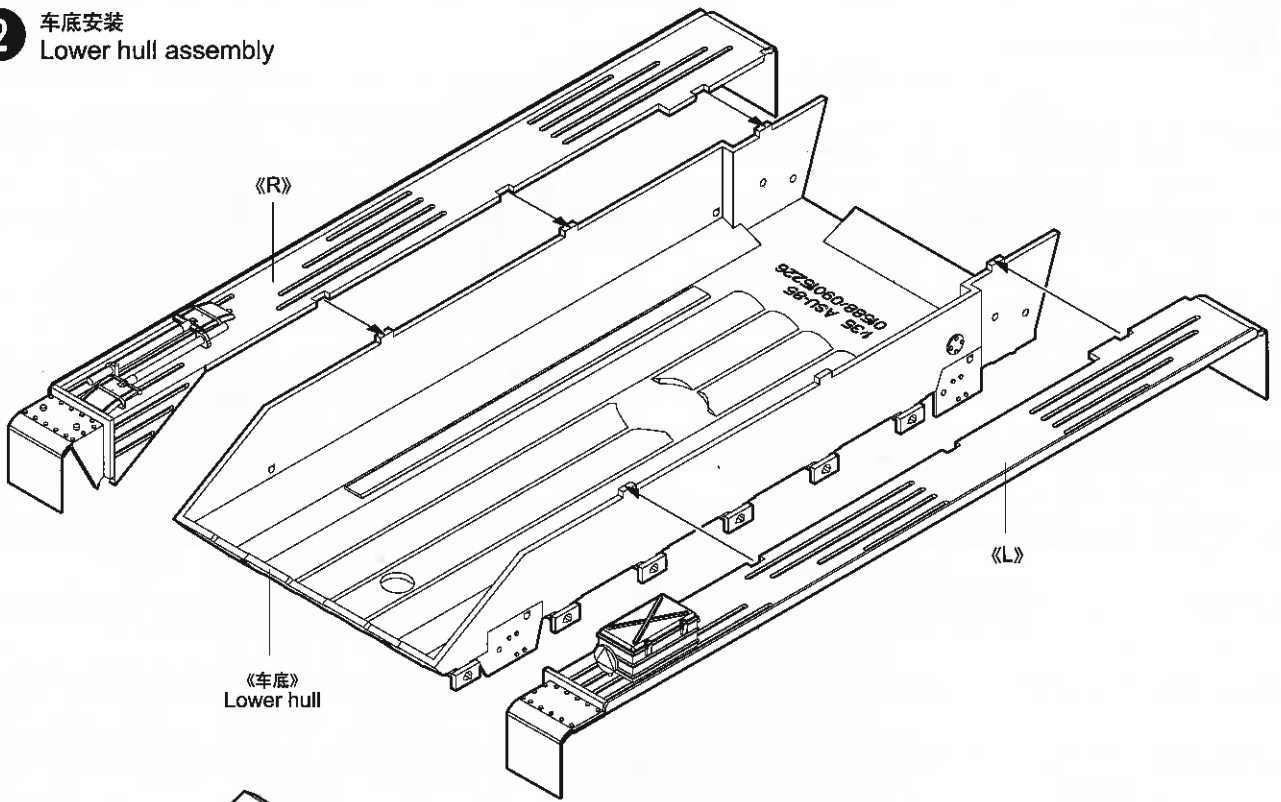
《负重轮》
Road wheel
制作12组
Make twelve



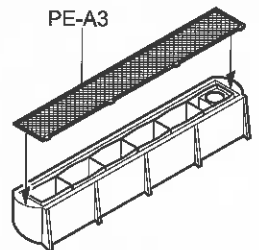
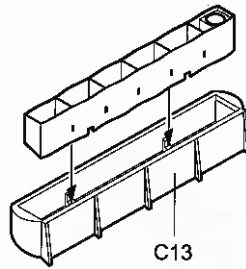
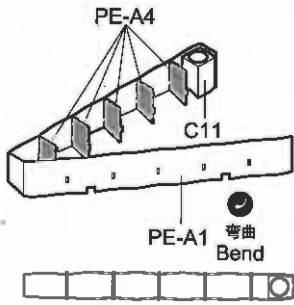
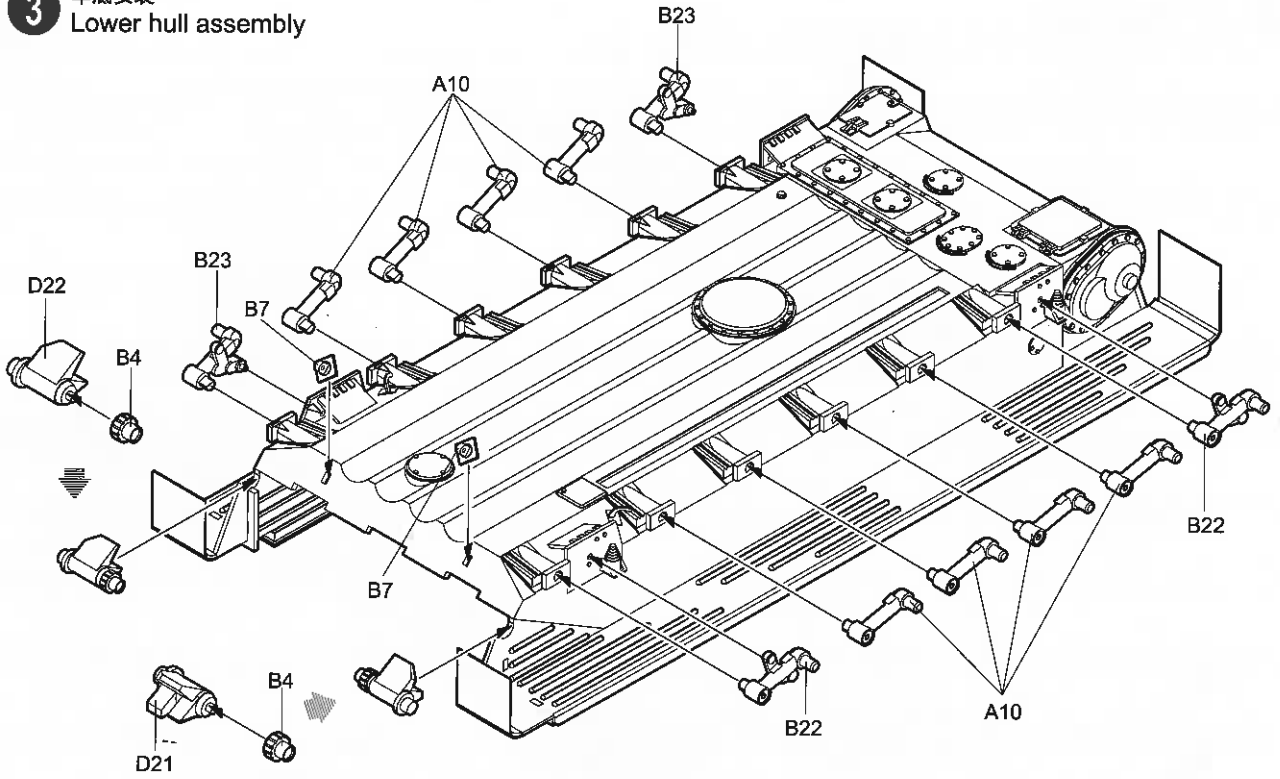
《诱导轮》
Idler wheel
制作2组
Make two



2 车底安装
Lower hull assembly

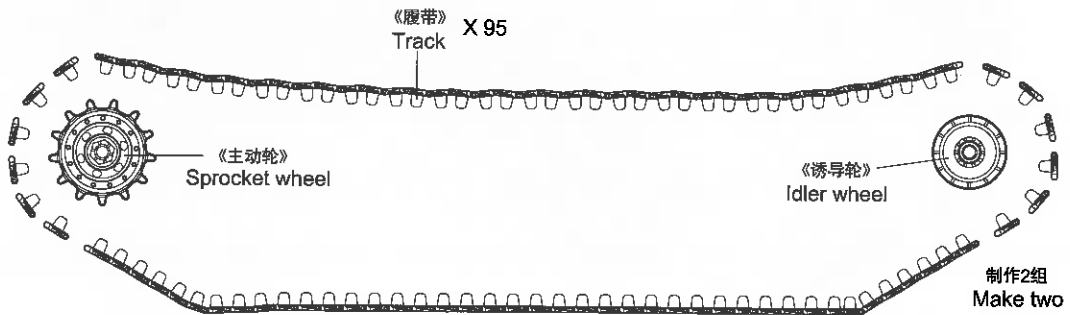


3 车底安装
Lower hull assembly

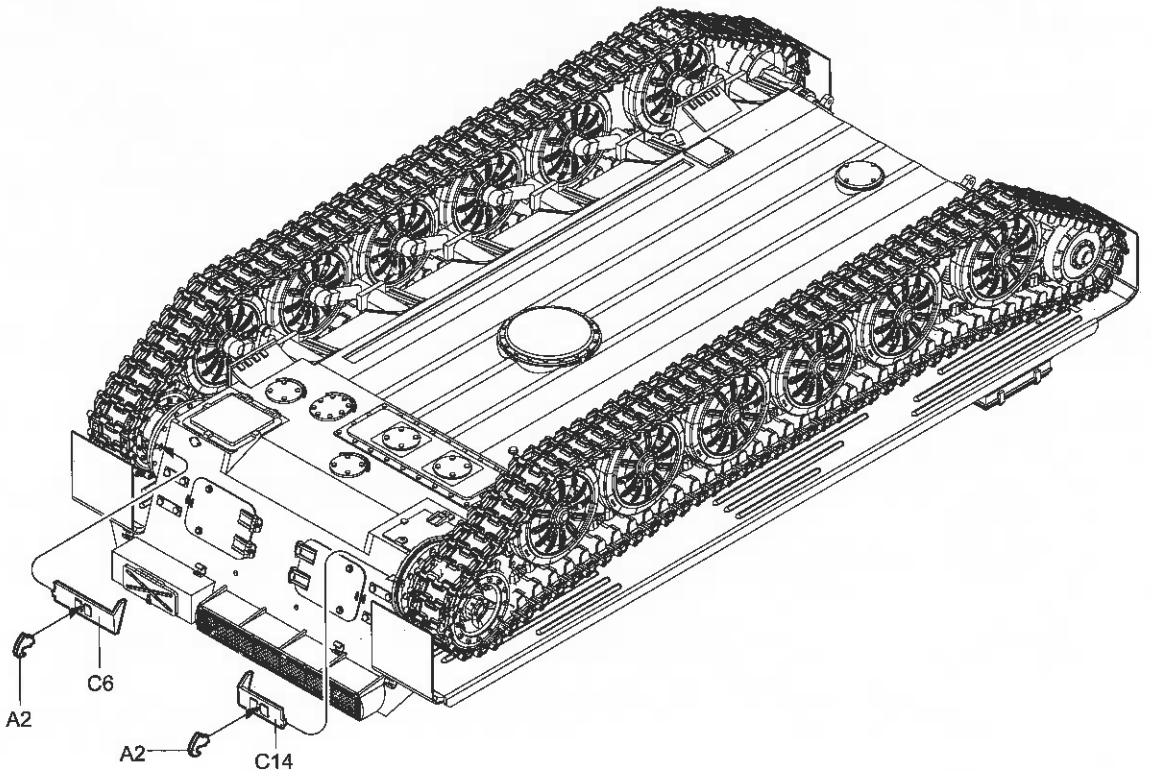
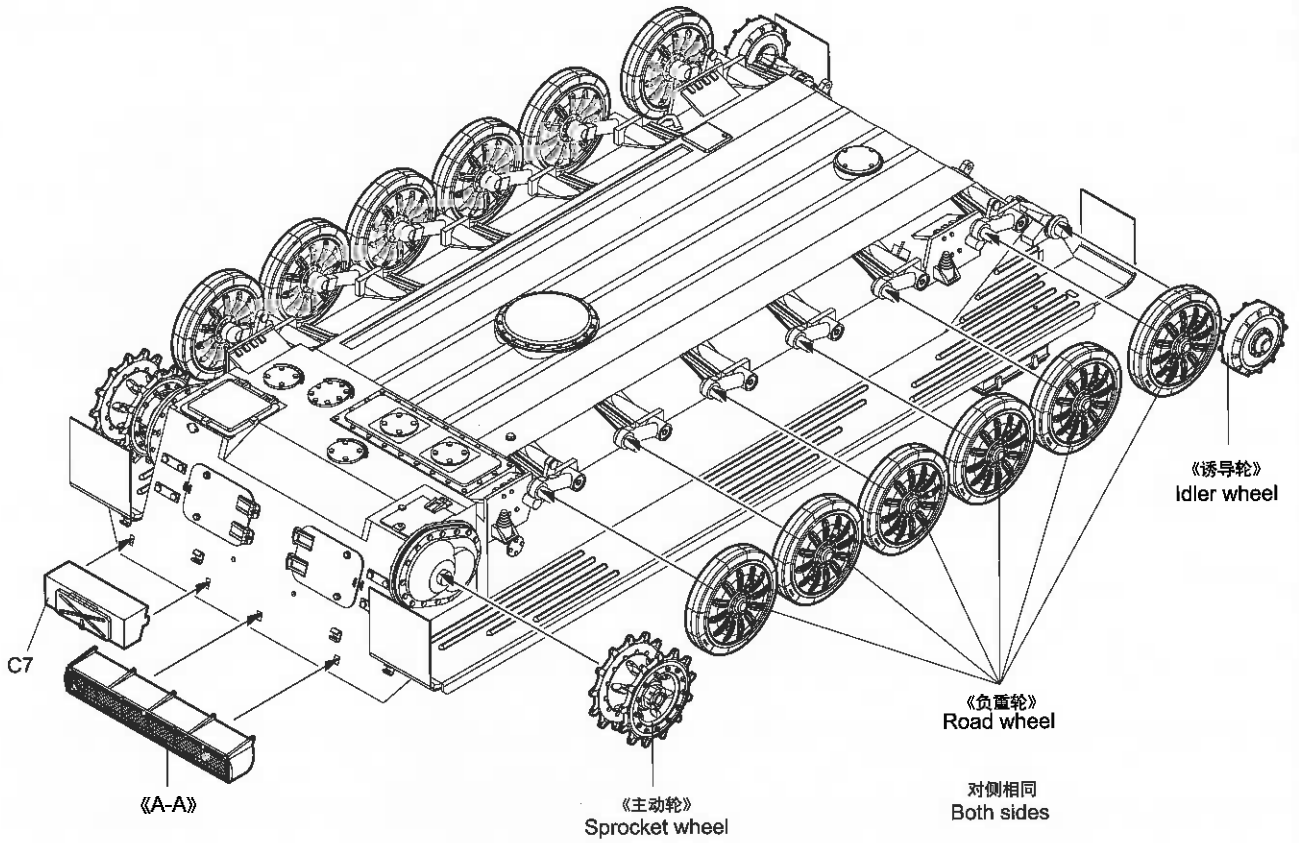


《A-A》

4 履带联接
Track construction

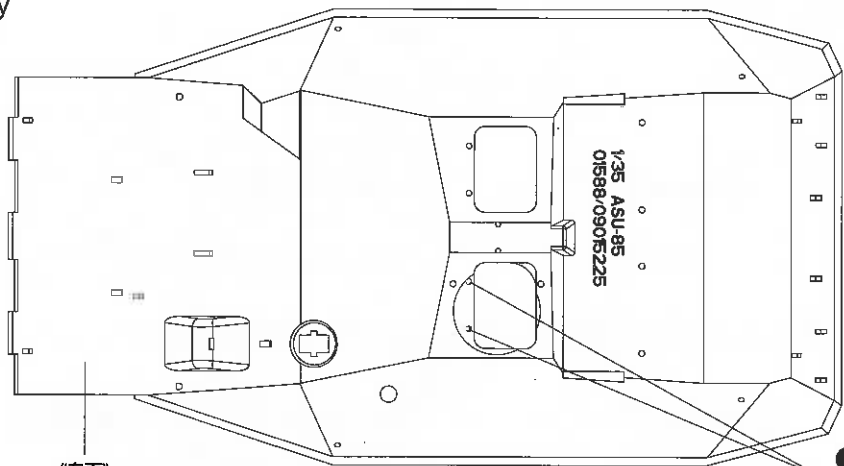


5 车轮安装
Attaching wheel



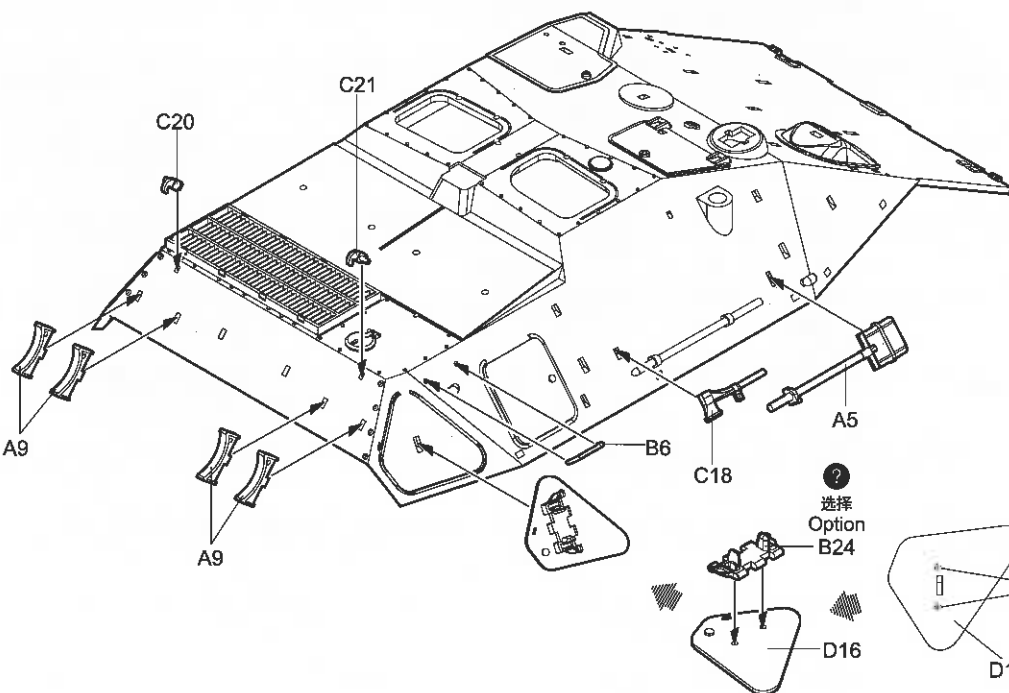
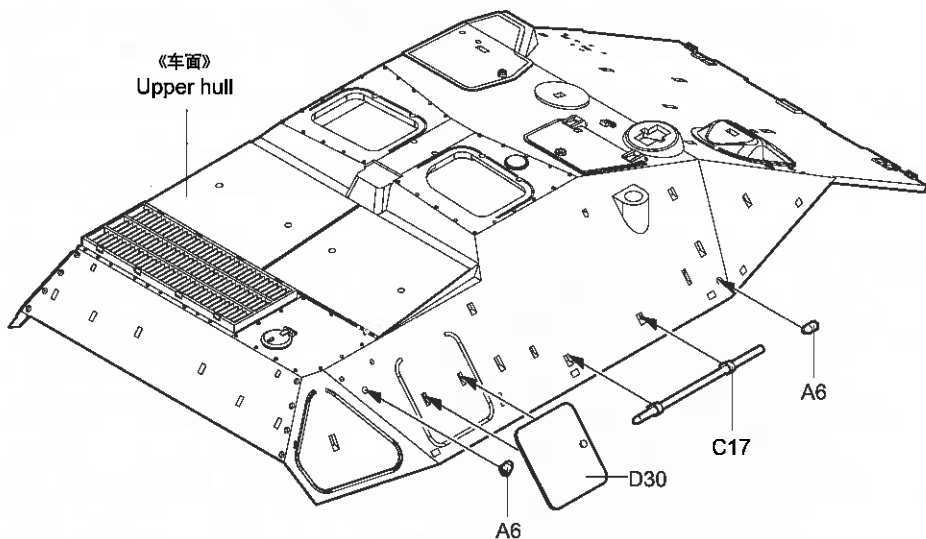
6

车体上部组装
Upper hull assembly



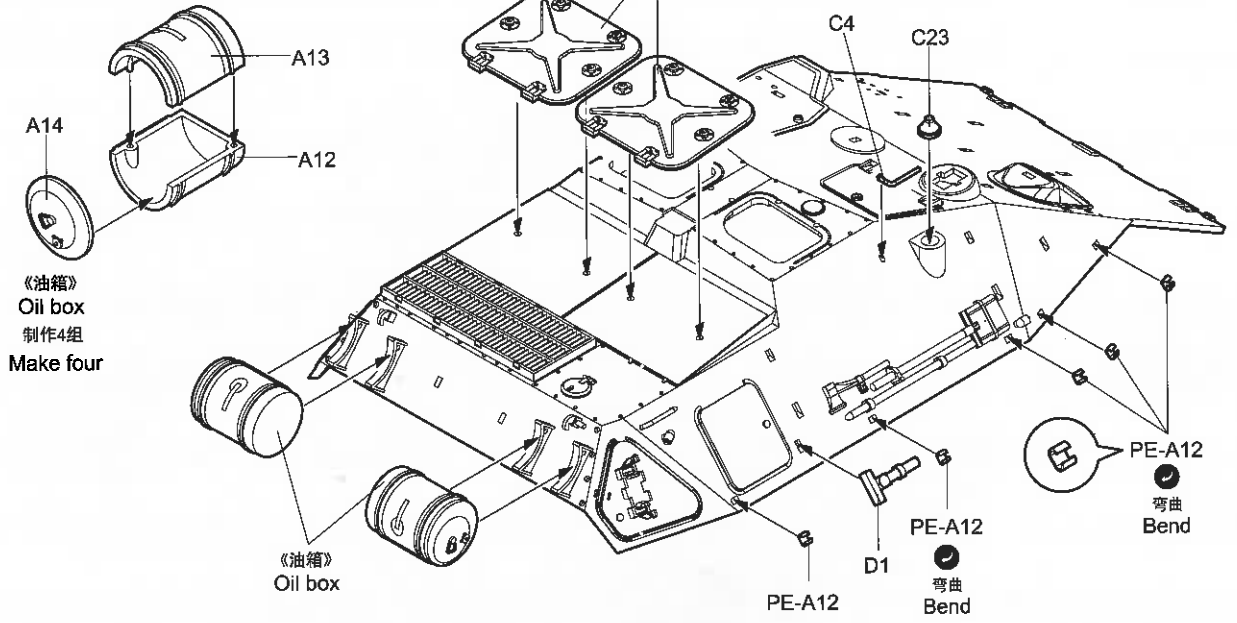
《车面》
Upper hull

T 钻孔
Make hole

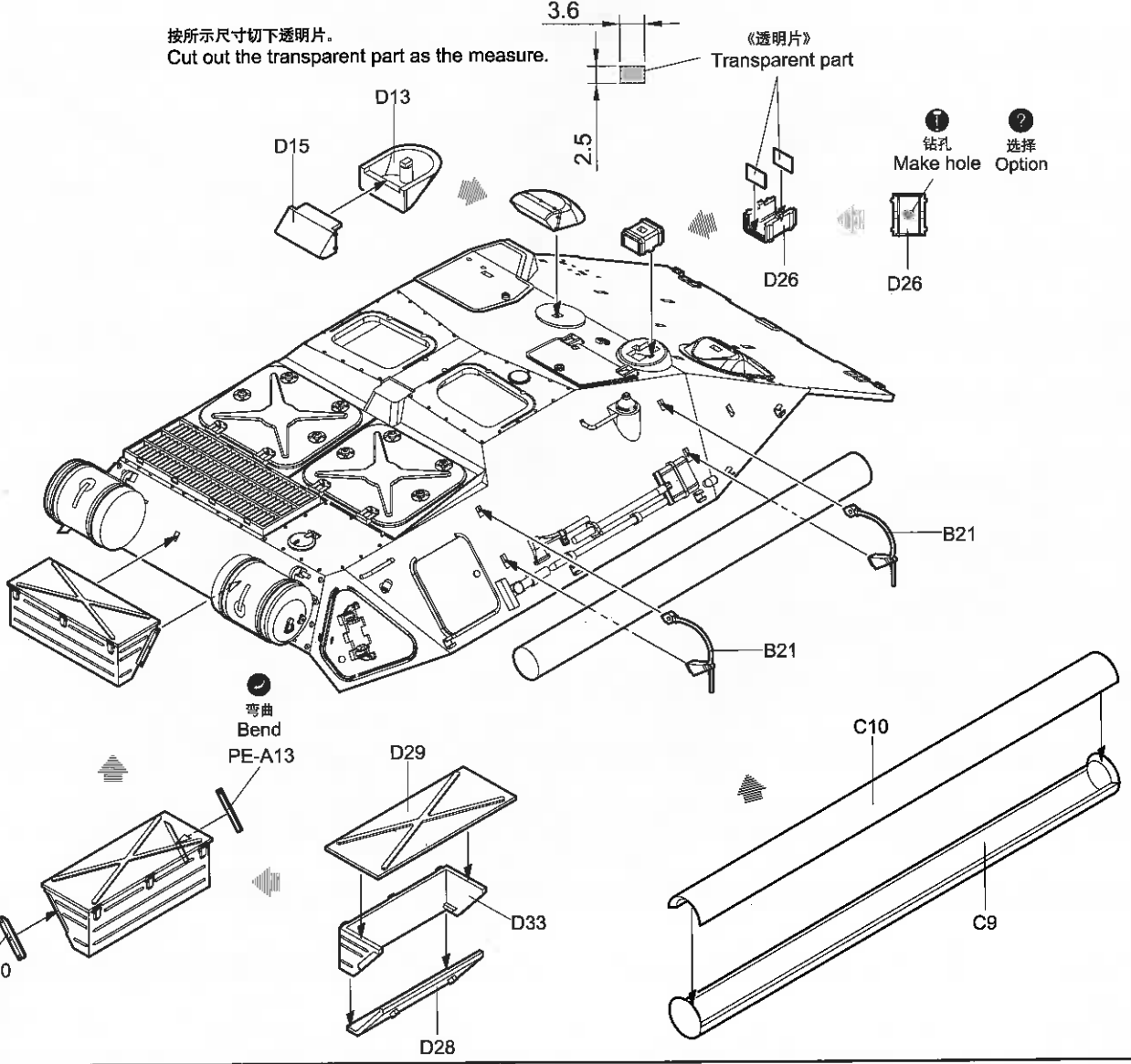


T 钻孔
Make hole
? 选择
Option

7 车体上部组装
Upper hull assembly

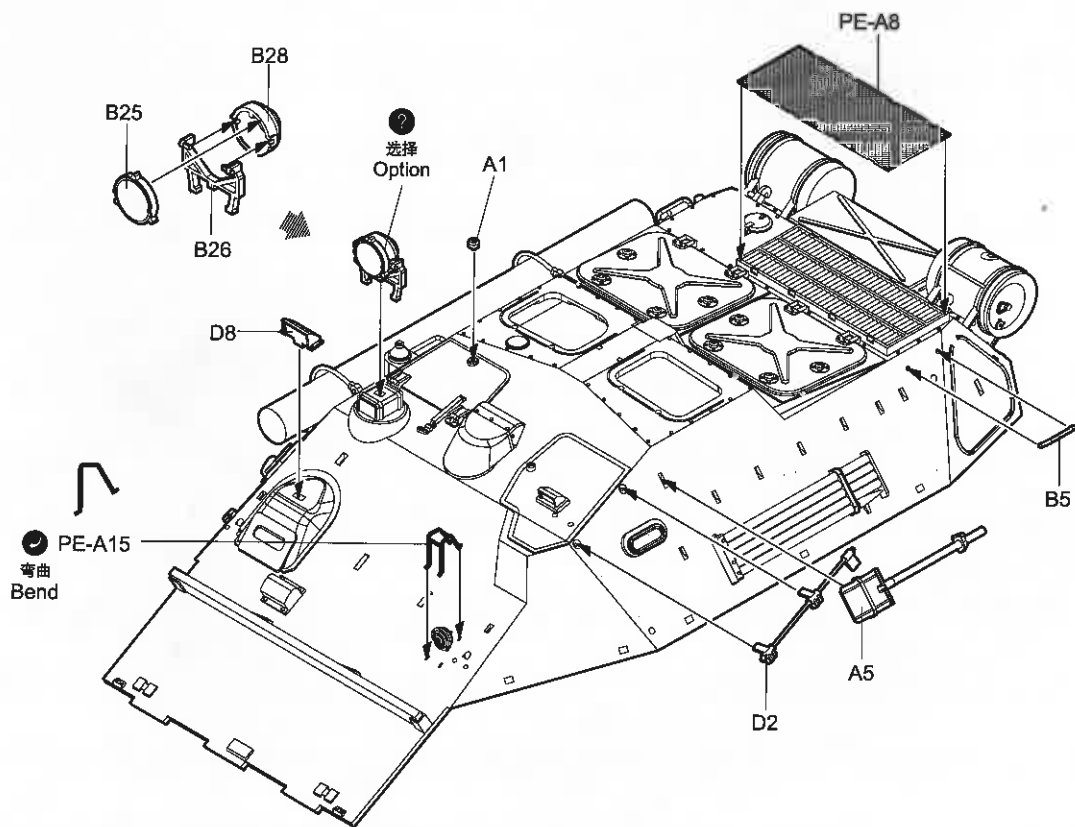
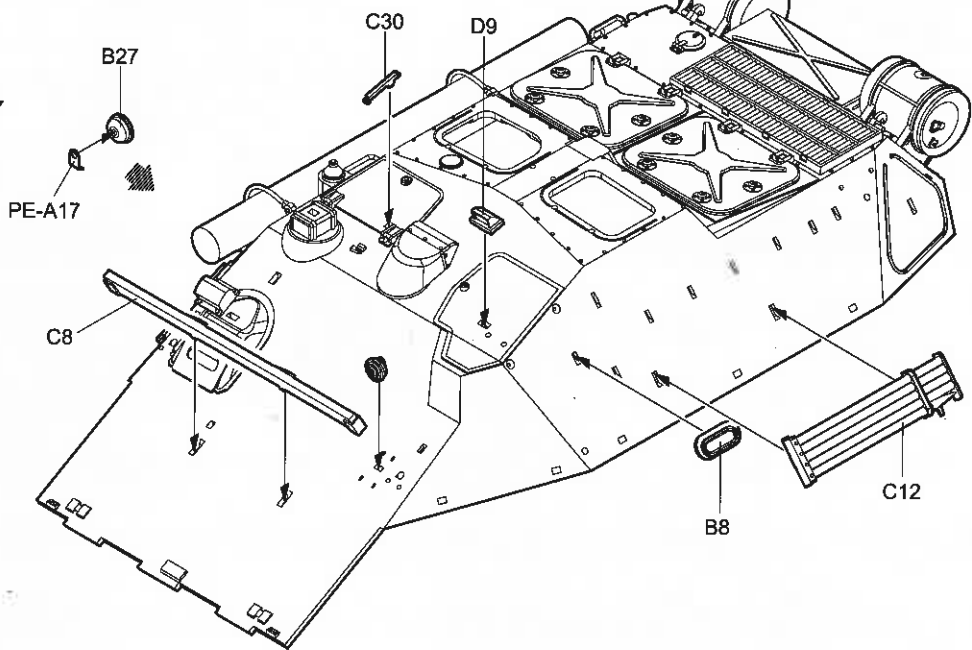


按所示尺寸切下透明片。
Cut out the transparent part as the measure.

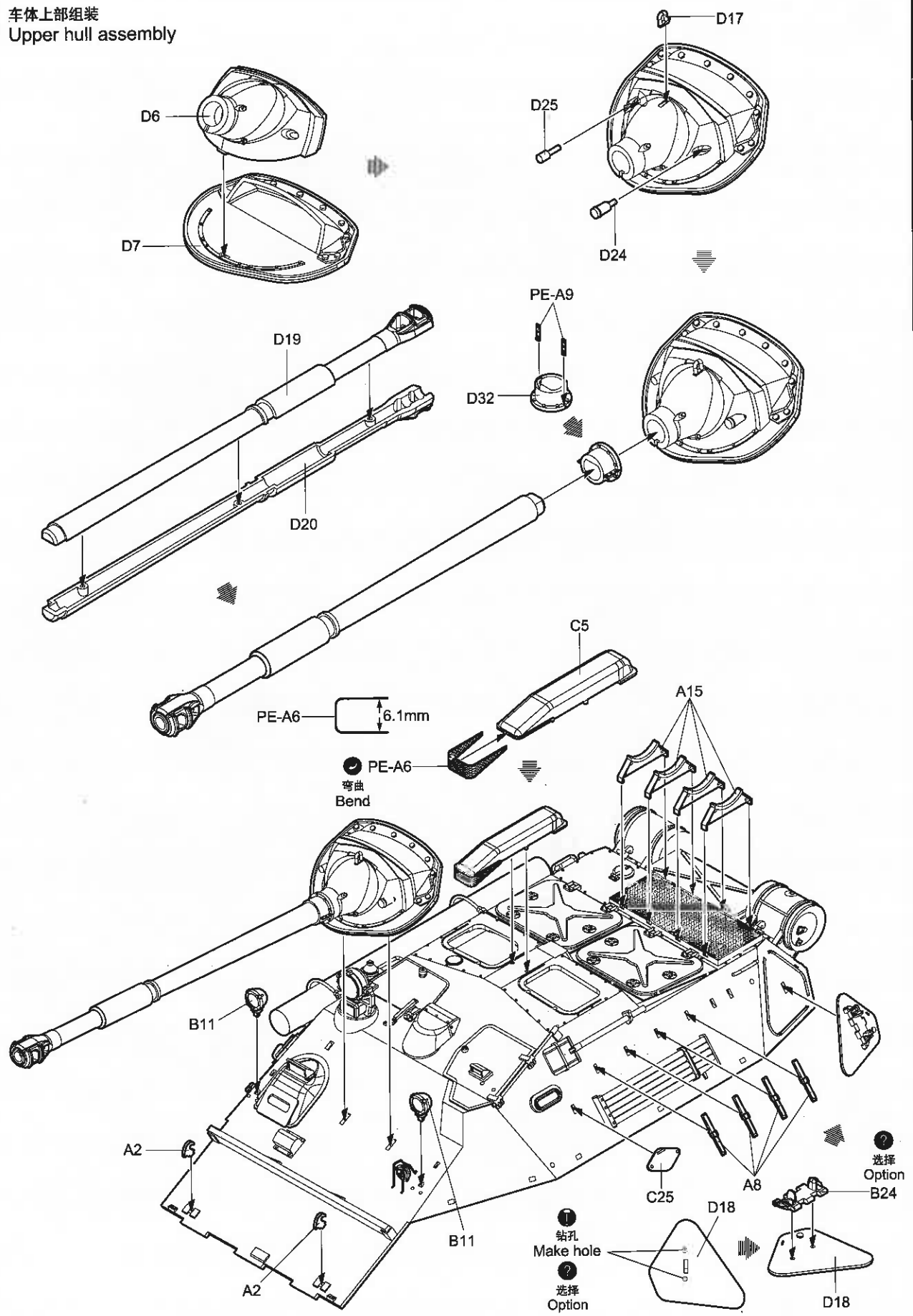


8 车体上部组装
Upper hull assembly

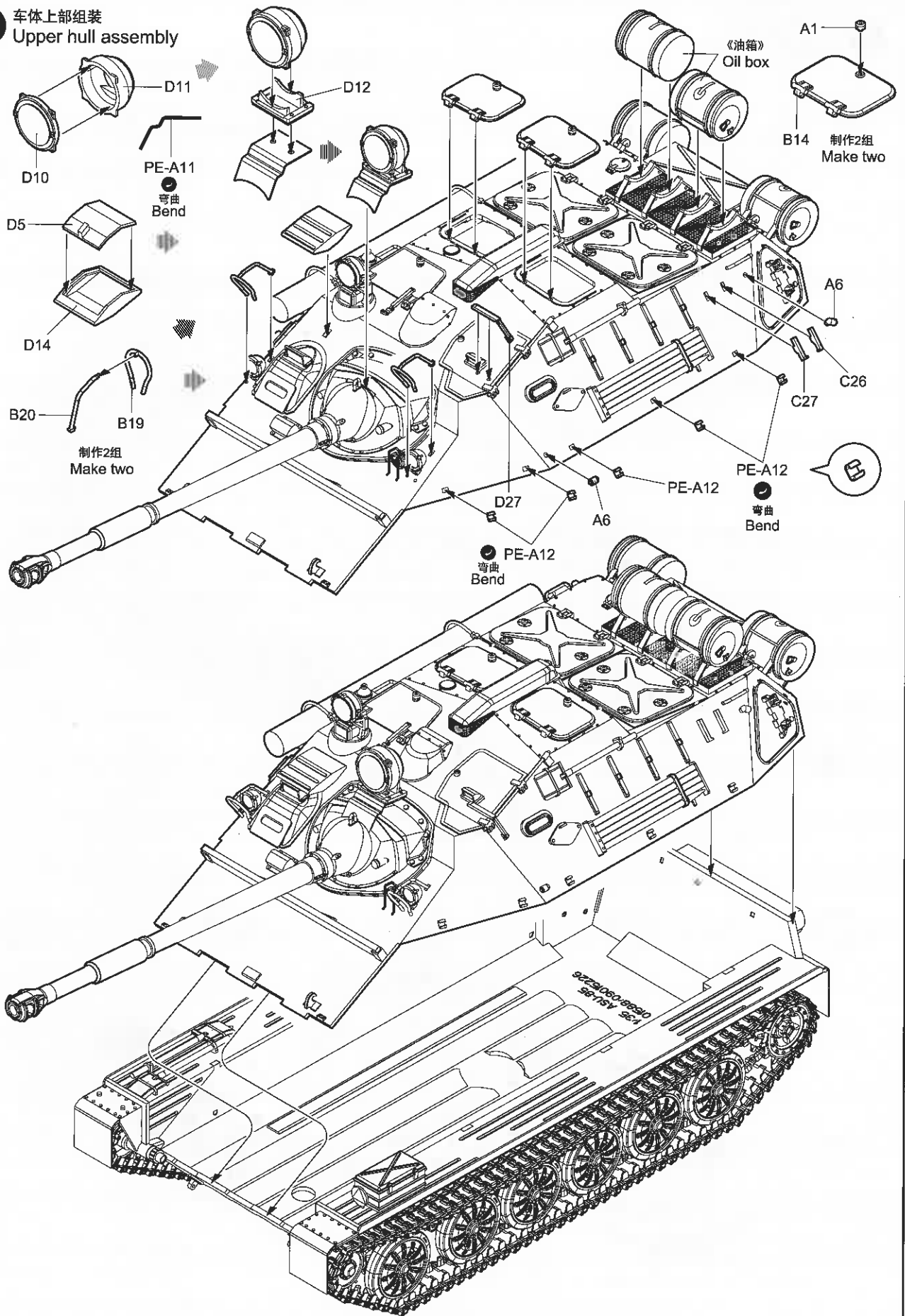
弯曲
Bend
PE-A17



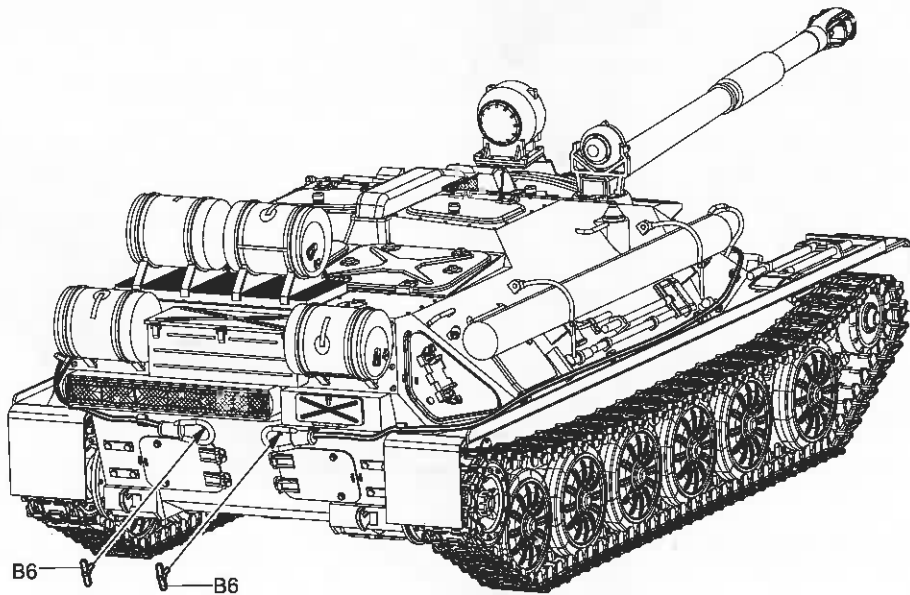
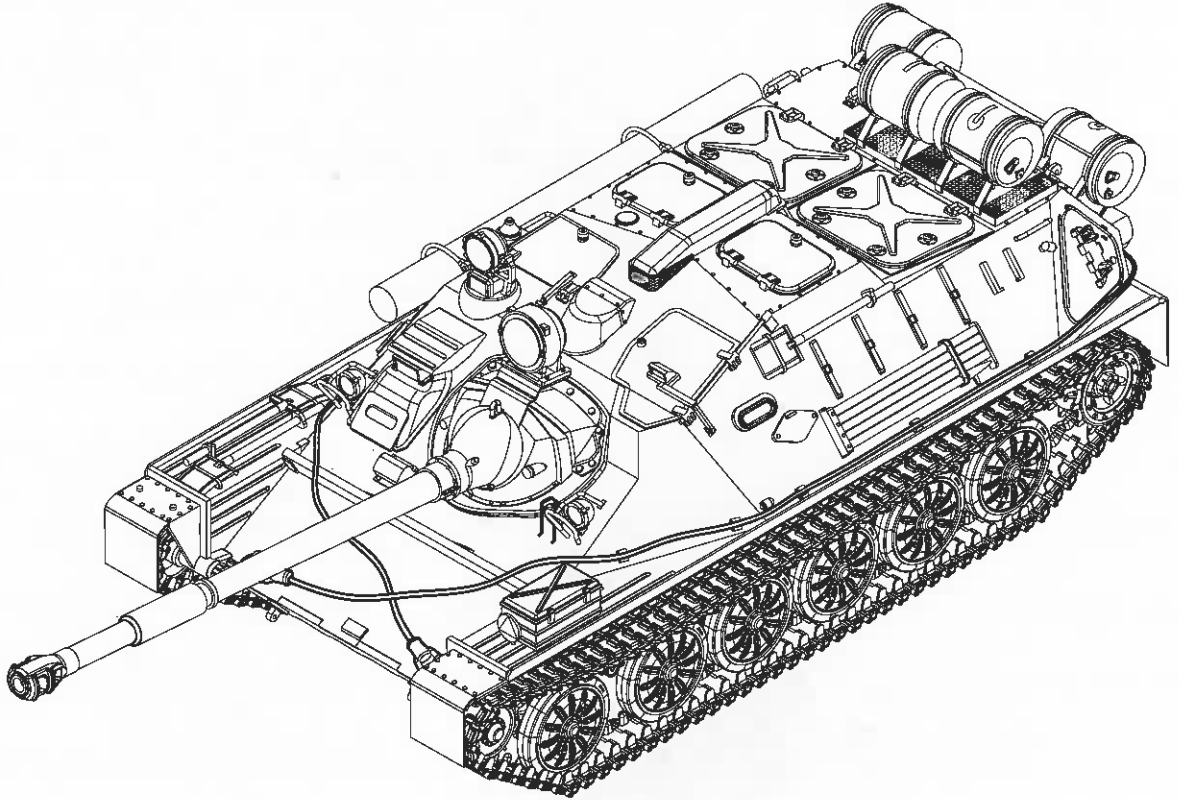
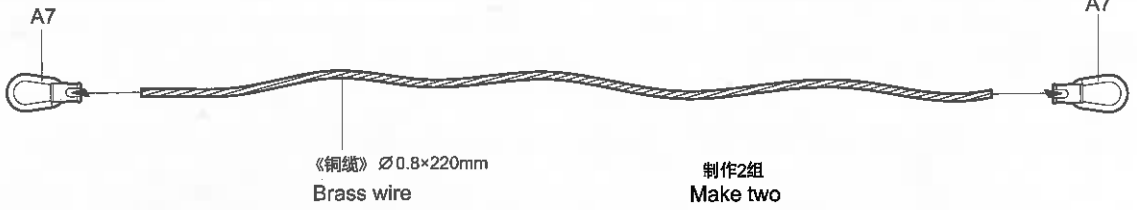
9 车体上部组装
Upper hull assembly



10 车体上部组装
Upper hull assembly



11 车体上部组装
Upper hull assembly

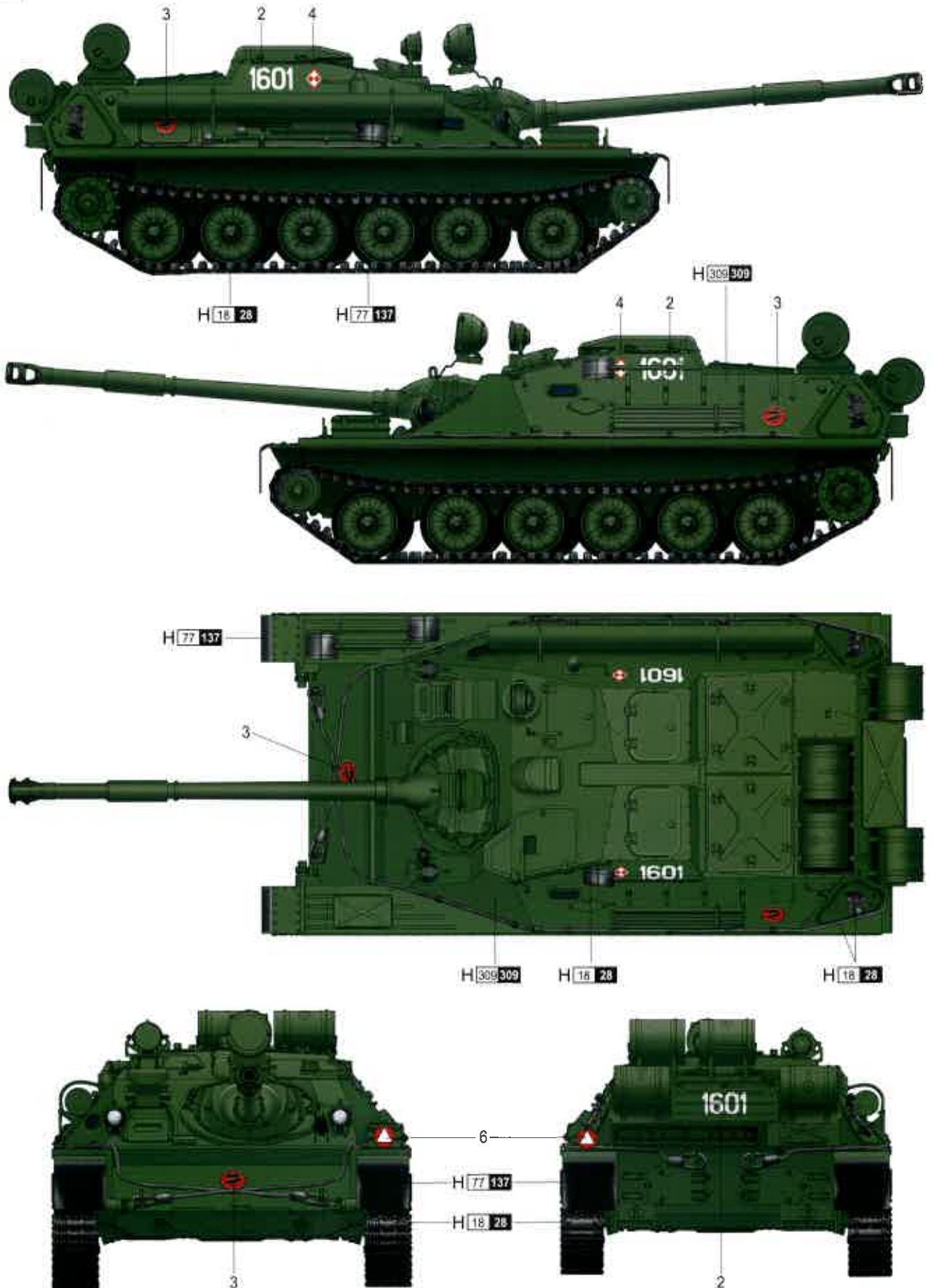


涂装同标贴指示 Painting & Marking guide

PAINT REFERENCE COLOUR

Color	Mr.Hobby	Vallejo	Model Master	Tamiya	Humbrol
Forest Green 森林绿	H 309 309	863	1710	XF58	116
Tan Black 黑褐色	H 77 137	-	-	-	-
Black 黑色	H 18 28	864	1402	-	-

B

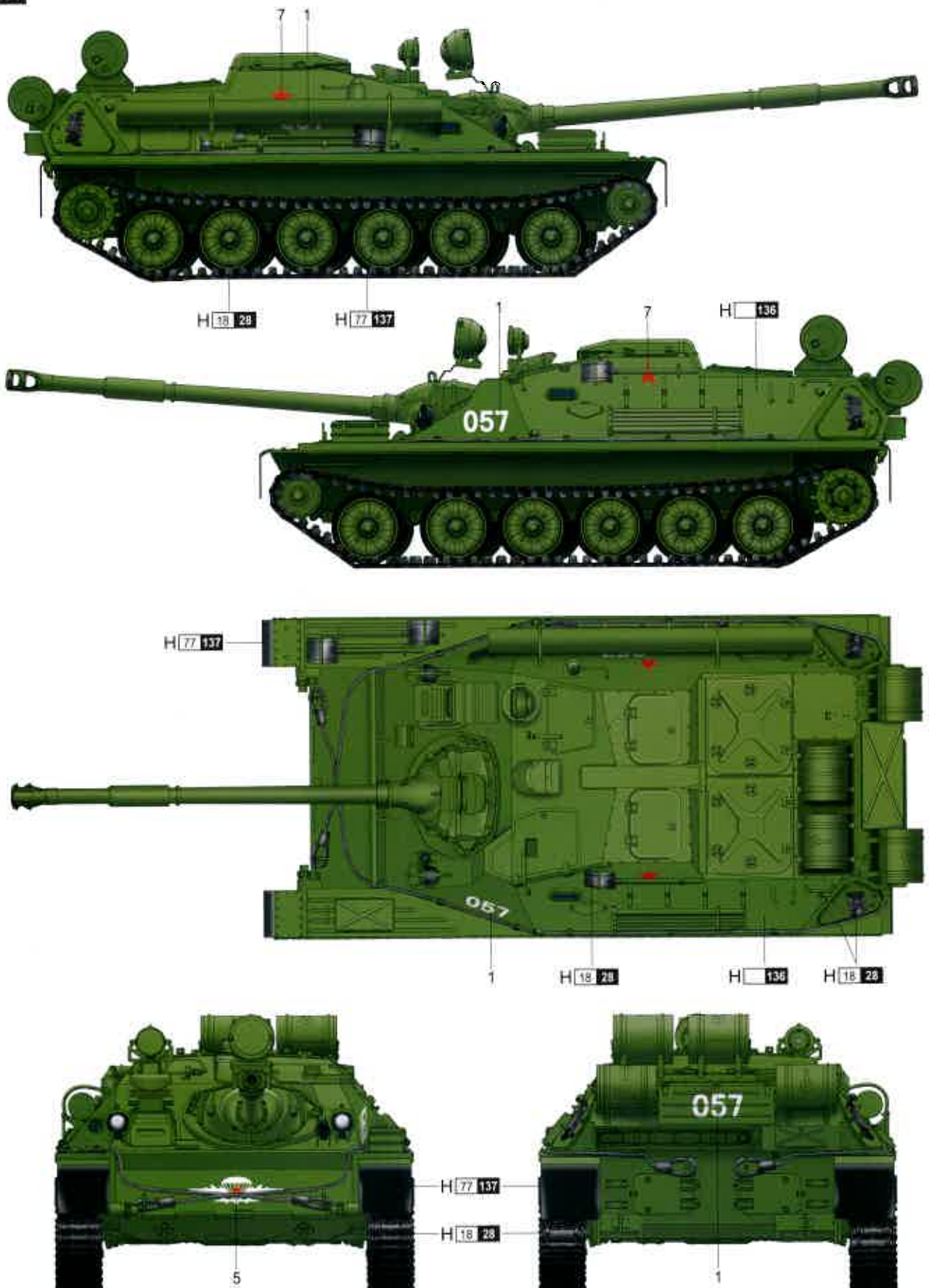


H AQUEOUS HOBBY COLOR ■ Mr. COLOR

涂装同标贴指示 Painting & Marking guide

PAINT REFERENCE COLOUR					
Color	Mr.Hobby	Vallejo	Model Master	Tamiya	Humbrol
俄罗斯陆军绿 俄罗斯陆军绿	H 136	823	-	-	-
轮胎黑 轮胎黑	H 77 137	-	-	-	-
防锈黑 防锈黑	H 18 28	884	1402	-	-

A



H AQUEOUS HOBBY COLOR ■ Mr. COLOR