

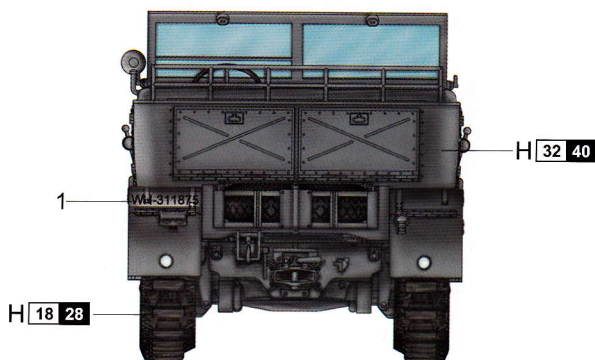
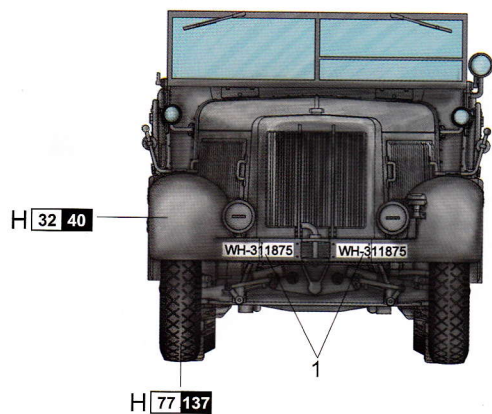
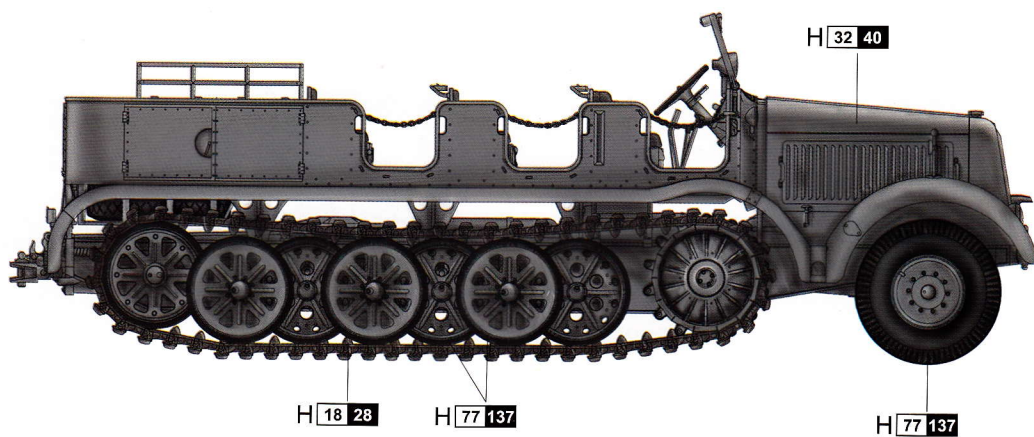
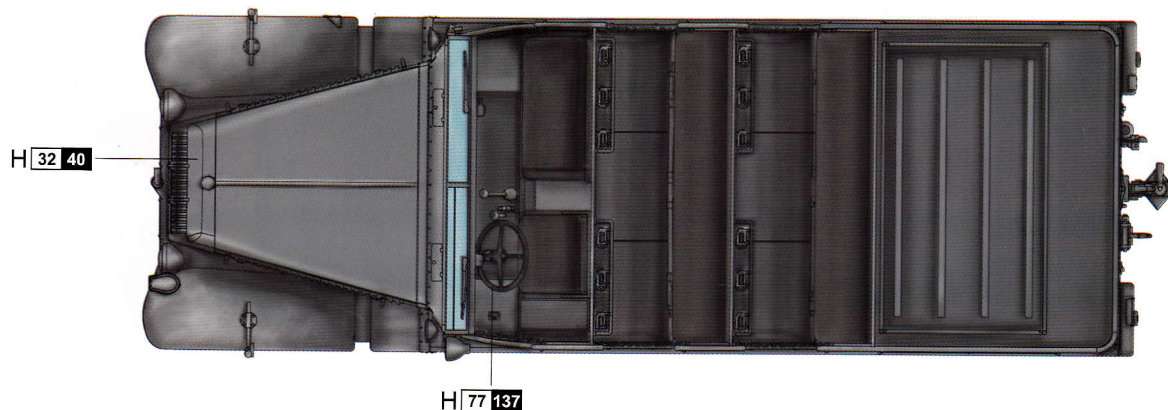
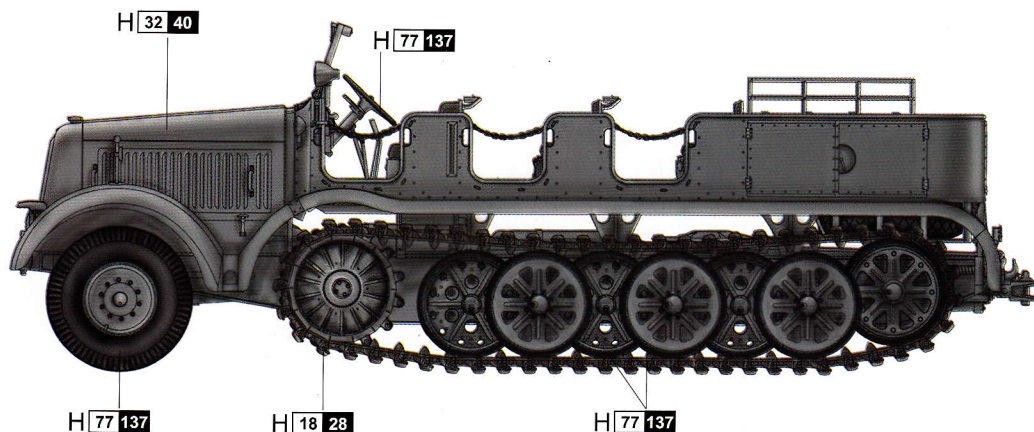
# 涂装同标贴指示

## Painting & Marking guide

A

### PAINT REFERENCE COLOUR

Color	Mr.Hobby	Vallejo	Model Master	Tamiya	Humbrol
Field Gray 原野灰	H 32 40	830	--	XF22	111
Steel 钢铁色	H 18 28	864	1402	--	--
Tire Black 胎黑色	H 77 137	--	--	--	--



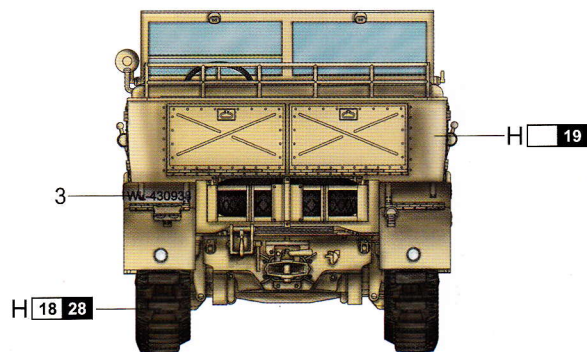
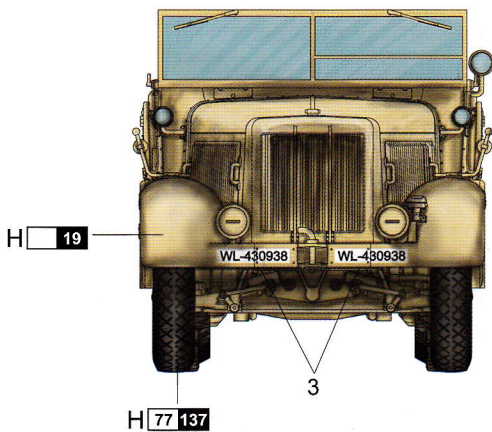
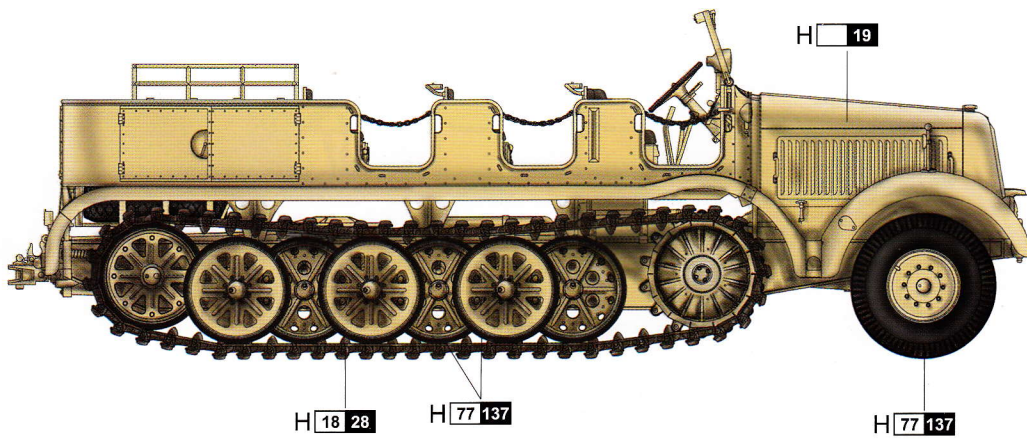
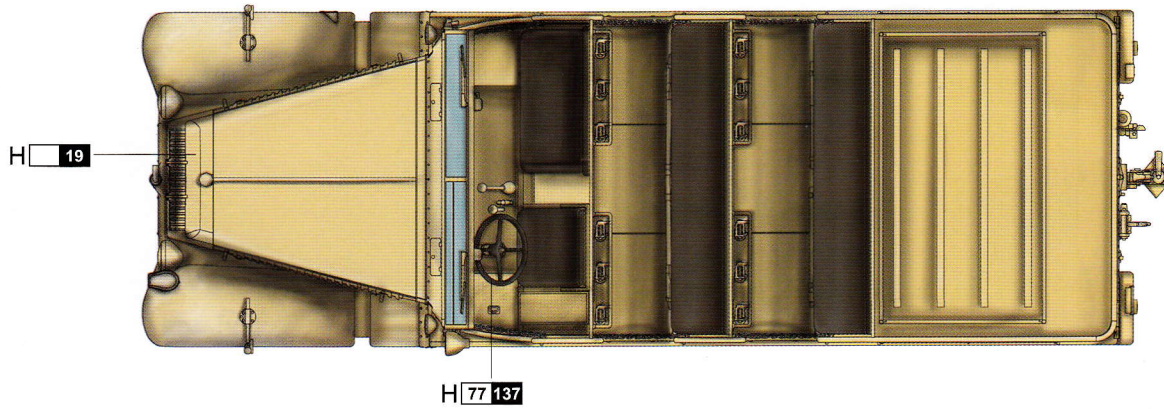
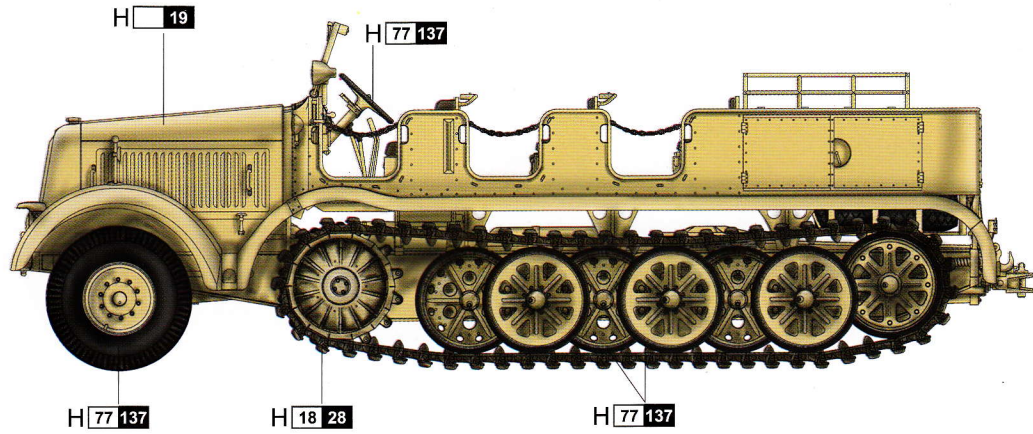
# 涂装同标贴指示

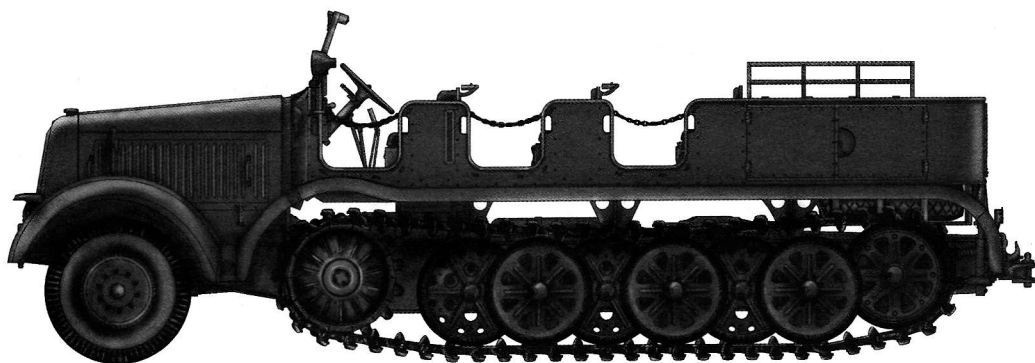
## Painting & Marking guide

### PAINT REFERENCE COLOUR

Color	Mr.Hobby	Vallejo	Model Master	Tamiya	Humbrol
Sandy Yellow 砂黄色	H 19	--	--	--	--
Steel 黑铁色	H 18 28	864	1402	--	--
Tire Black 胎黑色	H 77 137	--	--	--	--

**B**





## 德国12吨DB10牵引车

## Sd.Kfz.8 Schwerer Zugkraftwagen 12t

## READ BEFORE ASSEMBLY:

- Study and understand these instructions thoroughly before beginning assembly
- When needed, remove photo-etch parts carefully using a modeling knife or photo etch sprue cutter, being careful not to damage or lose small parts.
- Take extra care in handling photo etch parts in order to avoid injury
- Apply instant cement sparingly to photo etch parts where instructed
- Tools recommended(not included in kit):Plastic and instant cements, sprue cutters,long nose pliers,modeling knife, small files, tweezers, pin vise & scissors. Soft cloth and sandpaper will also assist in construction
- Glue and paint are not included in the kit. Use plastic cement and hobby paints only. Color guide for purchasing paint is included in the kit.

## 装配之前仔细阅读

- 小心用模型锉刀锉平所有零件表面的注射浇口。
- 小心用刀片切下蚀刻片零件，不要遗失小零件。
- 用强力快干胶水粘合蚀刻片零件和金属轴。过量快干胶水使用可能导致可动零件会粘住，小心涂胶。
- 取蚀刻片时应特别注意安全，防止利边划伤手指。
- 某些零件表面需贴水上贴纸，请选择在装配的同时进行。
- 推荐模型工具(自备)：胶水，水口剪刀，长咀钳，刀片，锉刀，镊子，钳，钻，剪刀，瞬间快干胶。
- 软布同砂纸同时也应该是必备工具。
- 请使用塑料胶水和油漆，模型内不含。

配重  
Weight使用强力胶  
Cyanoacrylate glue钻孔  
Make hole切除  
Cut / Remove贴纸  
Decal锉平  
File / Sand选择  
Option不涂胶水  
No cement弯曲  
Bend

## 水贴纸的使用:

- 1.从水贴上剪下印花;
- 2.将印花放入温水中浸10秒,然后放在干净布上。
- 3.拿着印花纸板将印花移到模型上;
- 4.手指蘸水将印花移到适当的位置;
- 5.用软布轻压印花直至水干, 气泡消失

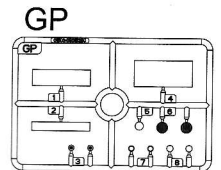
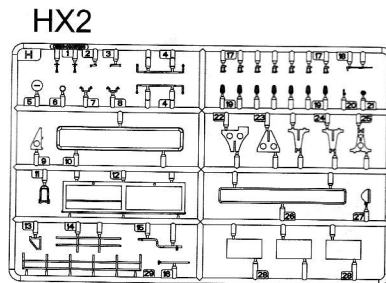
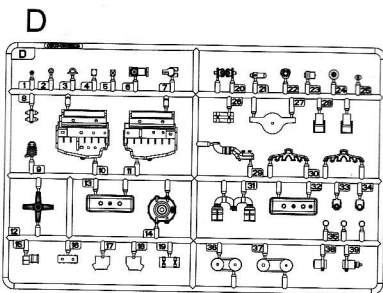
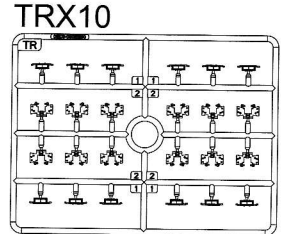
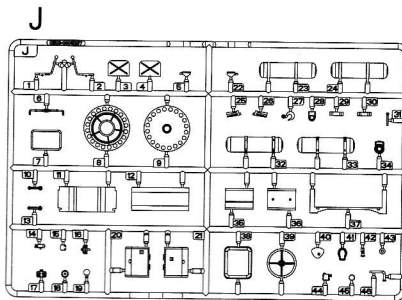
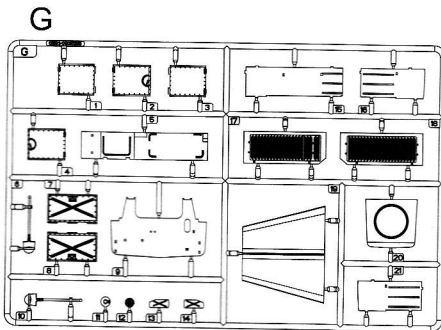
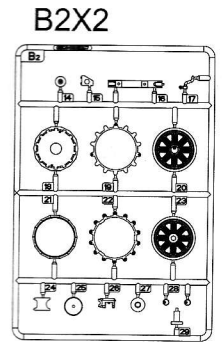
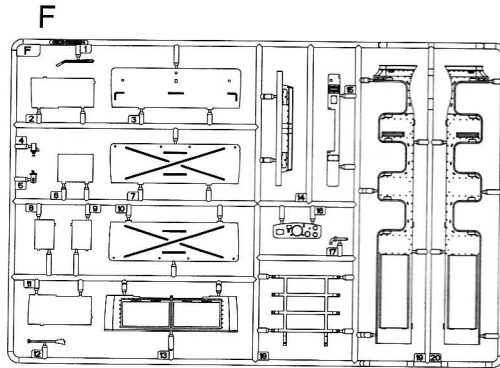
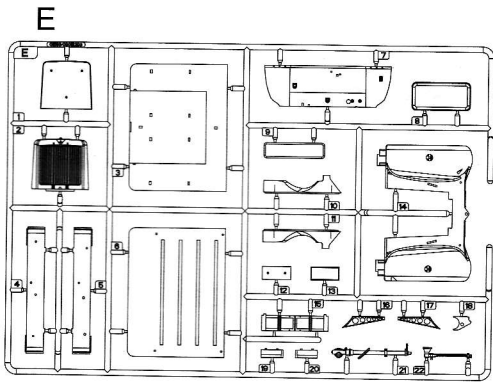
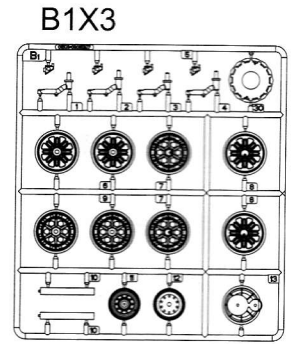
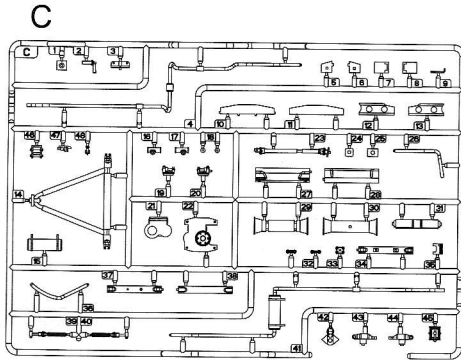
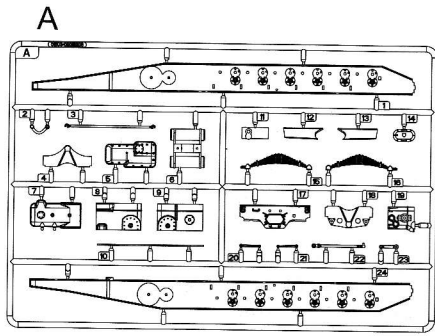
## DECAL APPLICATION

- 1.Cut decals from sheet as needed
- 2.Dip the decal in warm water for about 10 seconds and then place on soft clean cloth.
- 3.Hold the decal backing sheet edge and gently slide the decal onto the model in its proper position.

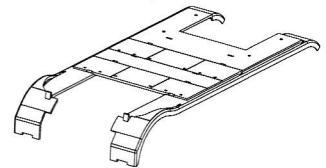
- 4.While still wet,decal can be adjusted for better fit on model by dampening it gently with your finger.
- 5.When placed in the proper position,gently press decal down with a soft cloth until excess water and air bubbles are gone.
- 6.Allow decal to dry completely before handling model

# 部品图

## Parts



《车面》  
Upper hull



《轮胎1》X3  
Tyre



《轮胎2》X3  
Tyre



《铜丝》: Ø0.6X100mm  
Brass wires



《棉绳》: Ø0.6X1000mm  
Thread



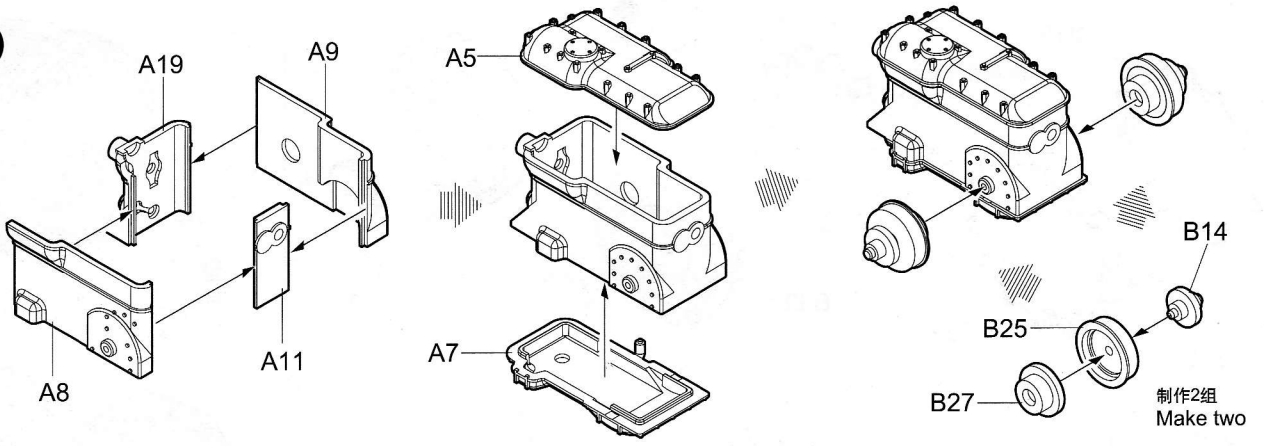
《链条》: Ø0.25X200mm  
Chain



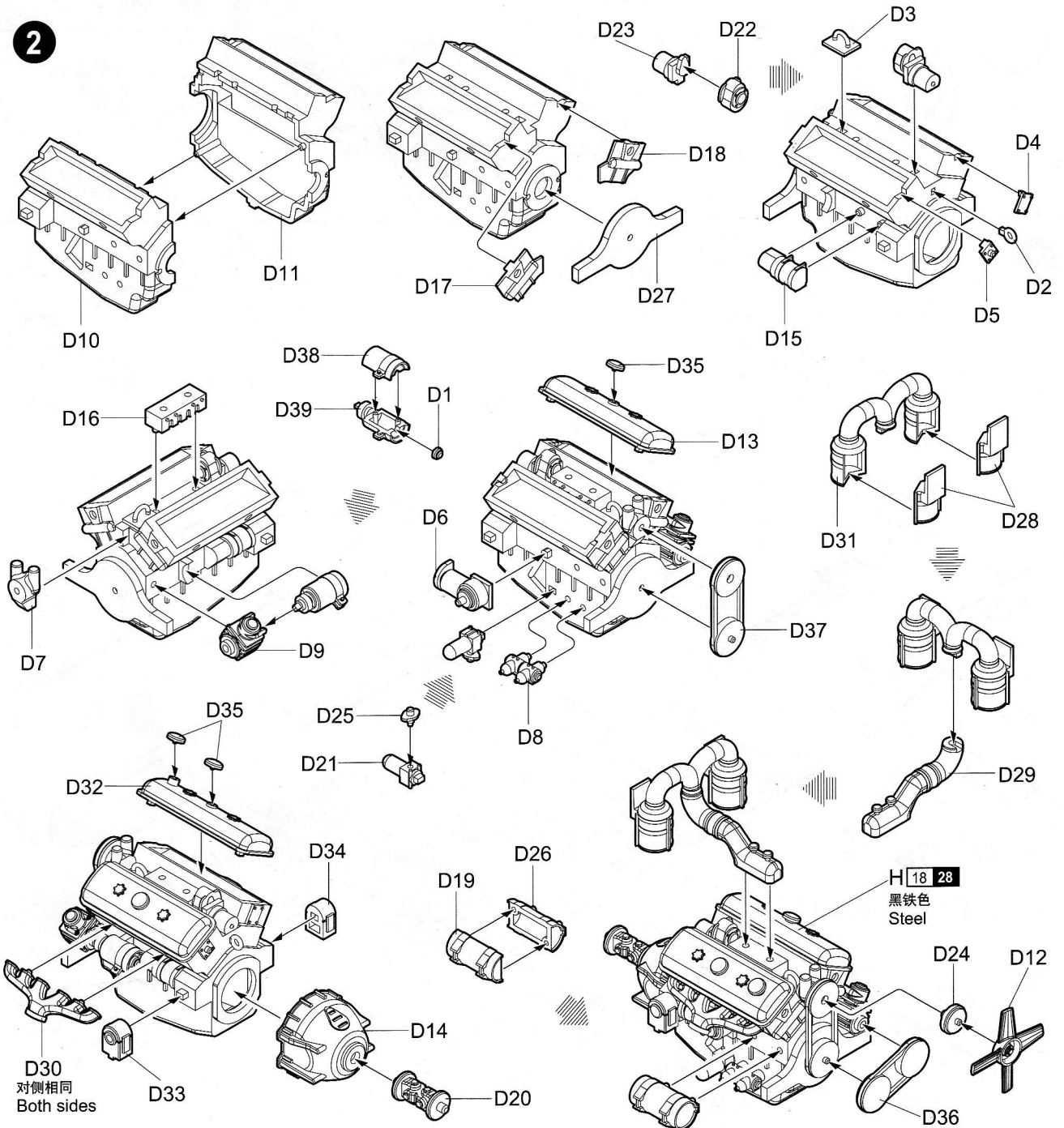
《水贴》  
Decal

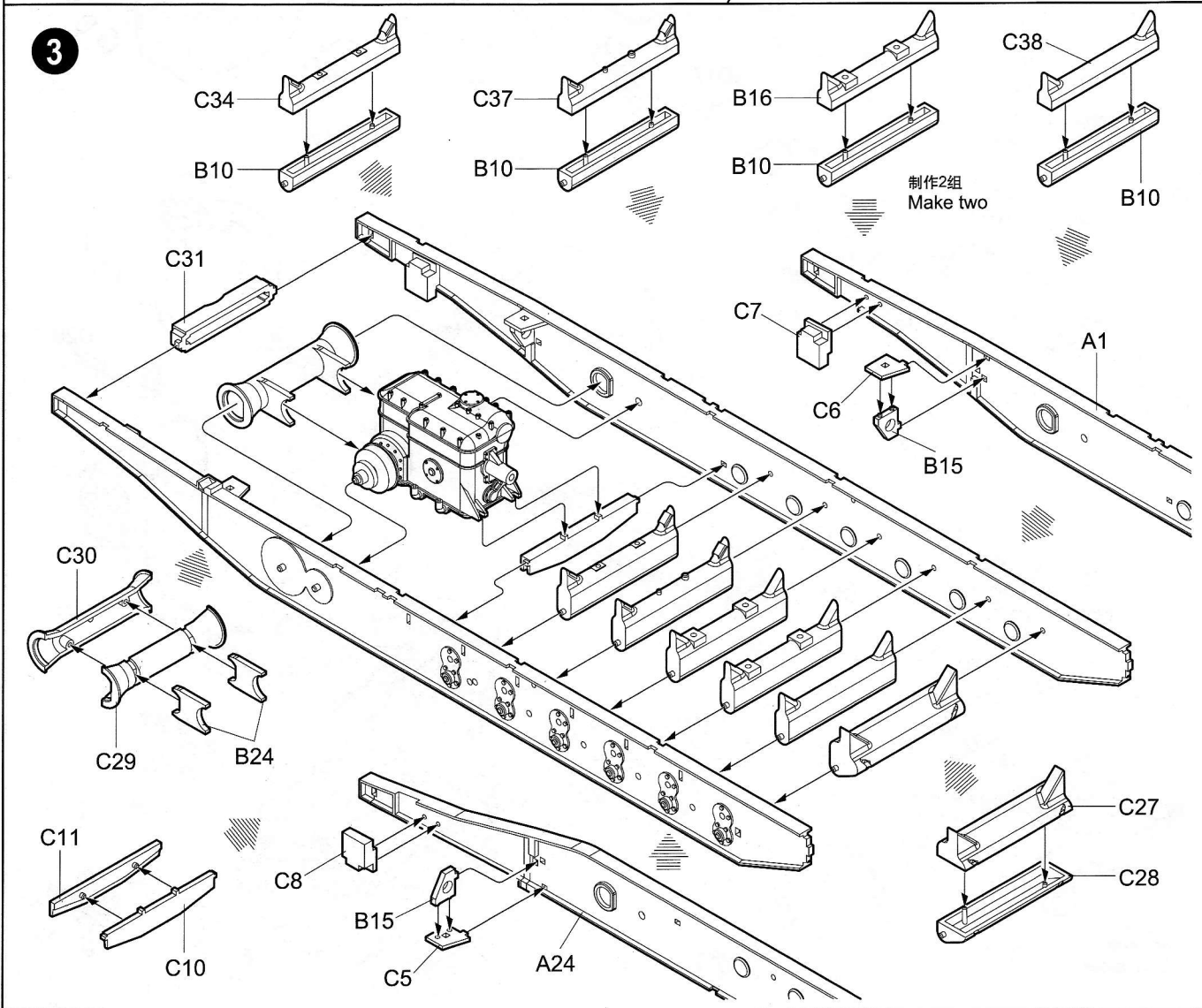
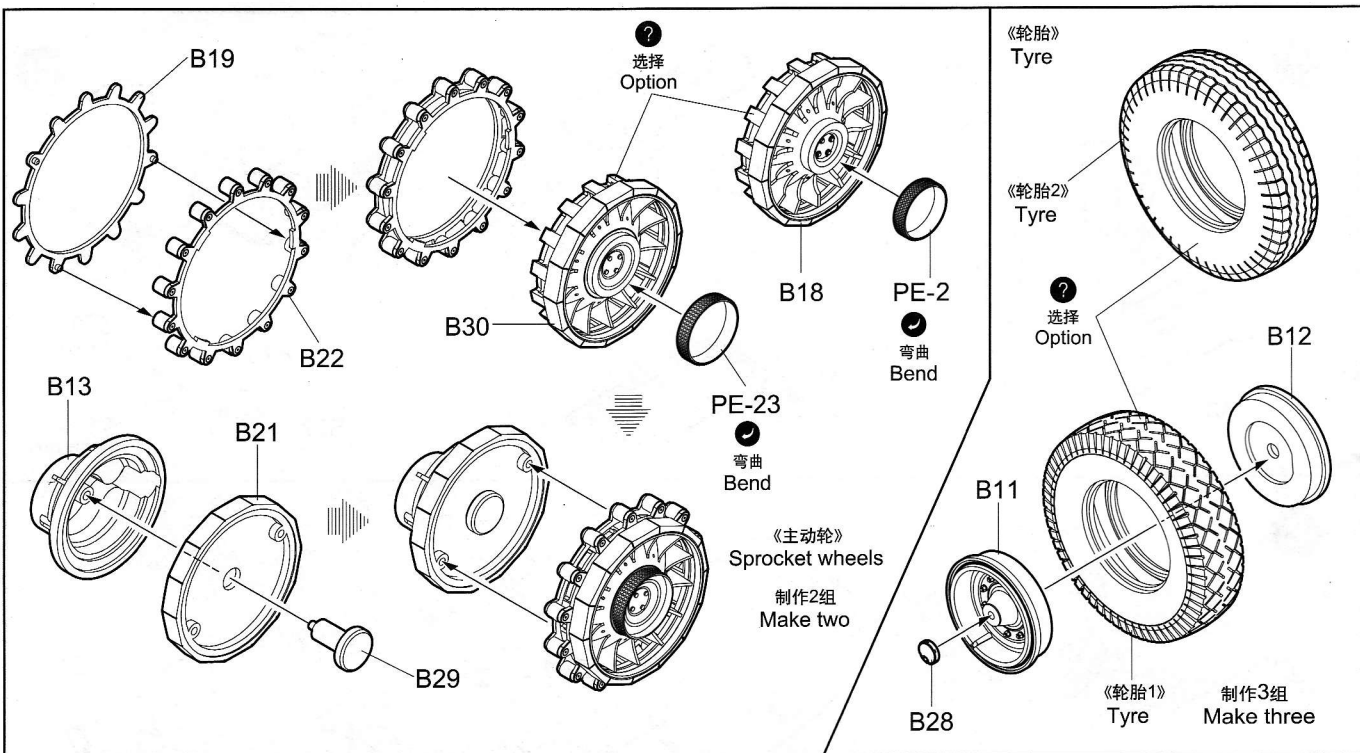


1



2





4

C12  
对侧C13  
Opposite

B5  
对侧相同  
Both sides

C4

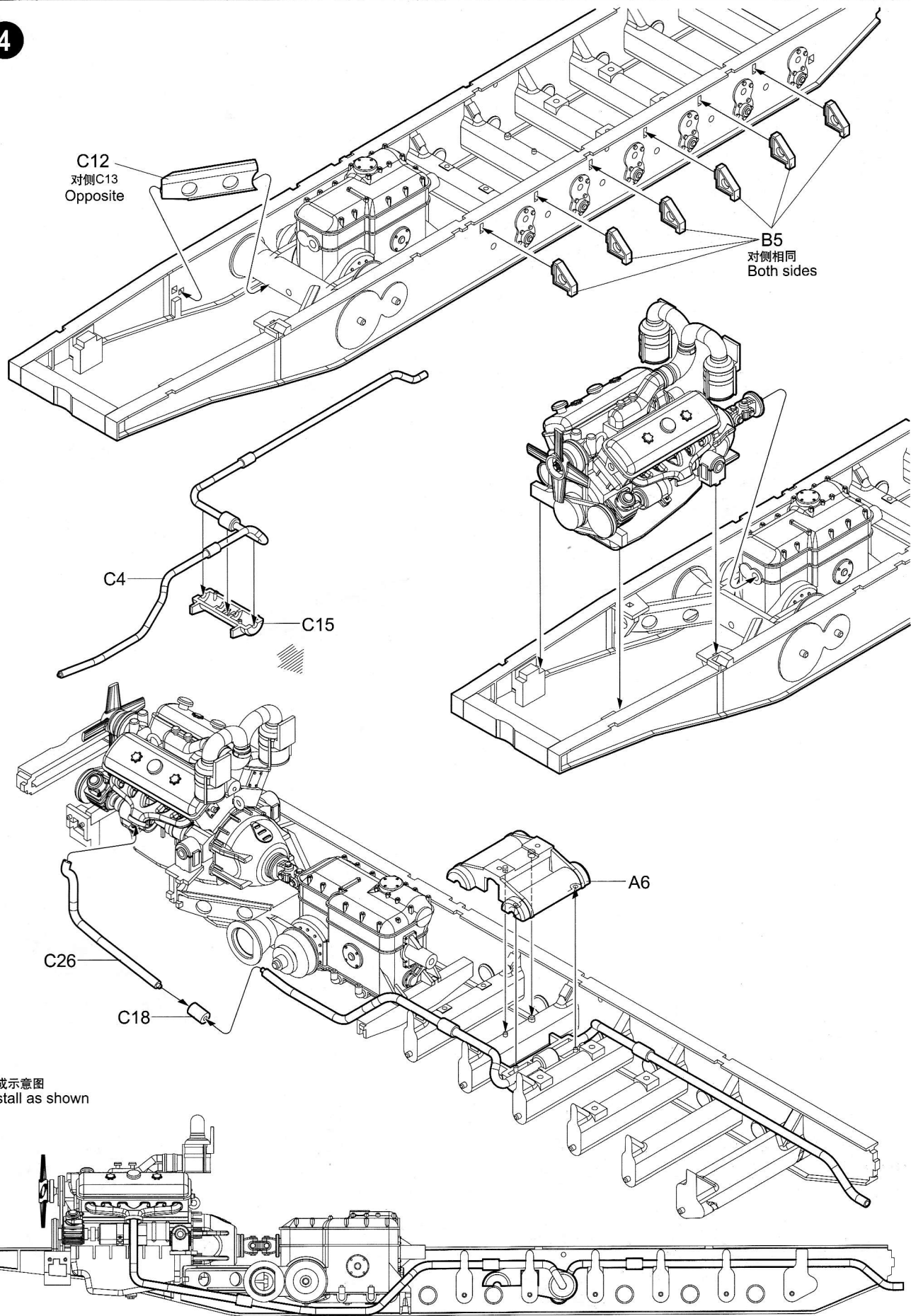
C15

C26

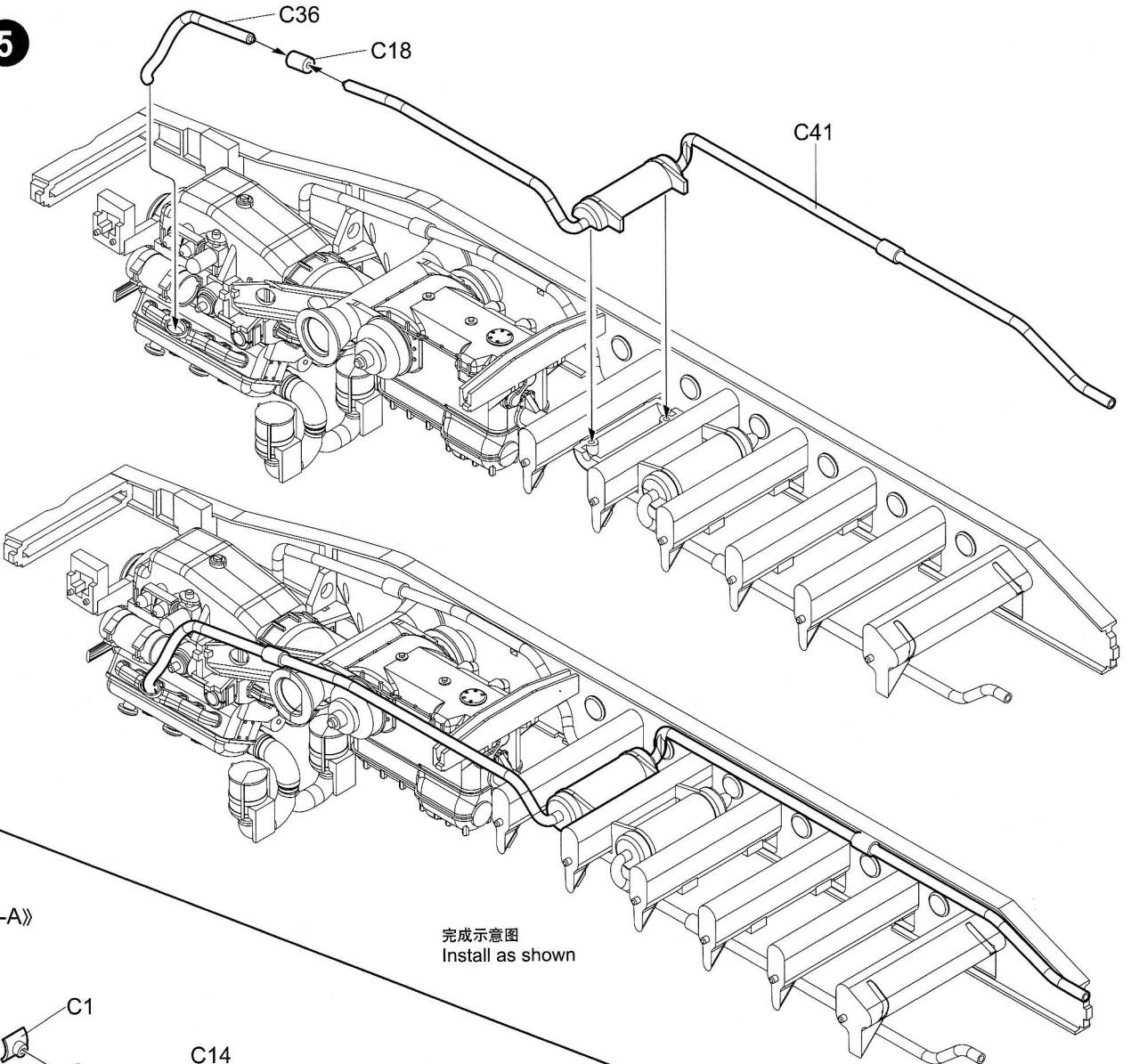
C18

A6

完成示意图  
Install as shown

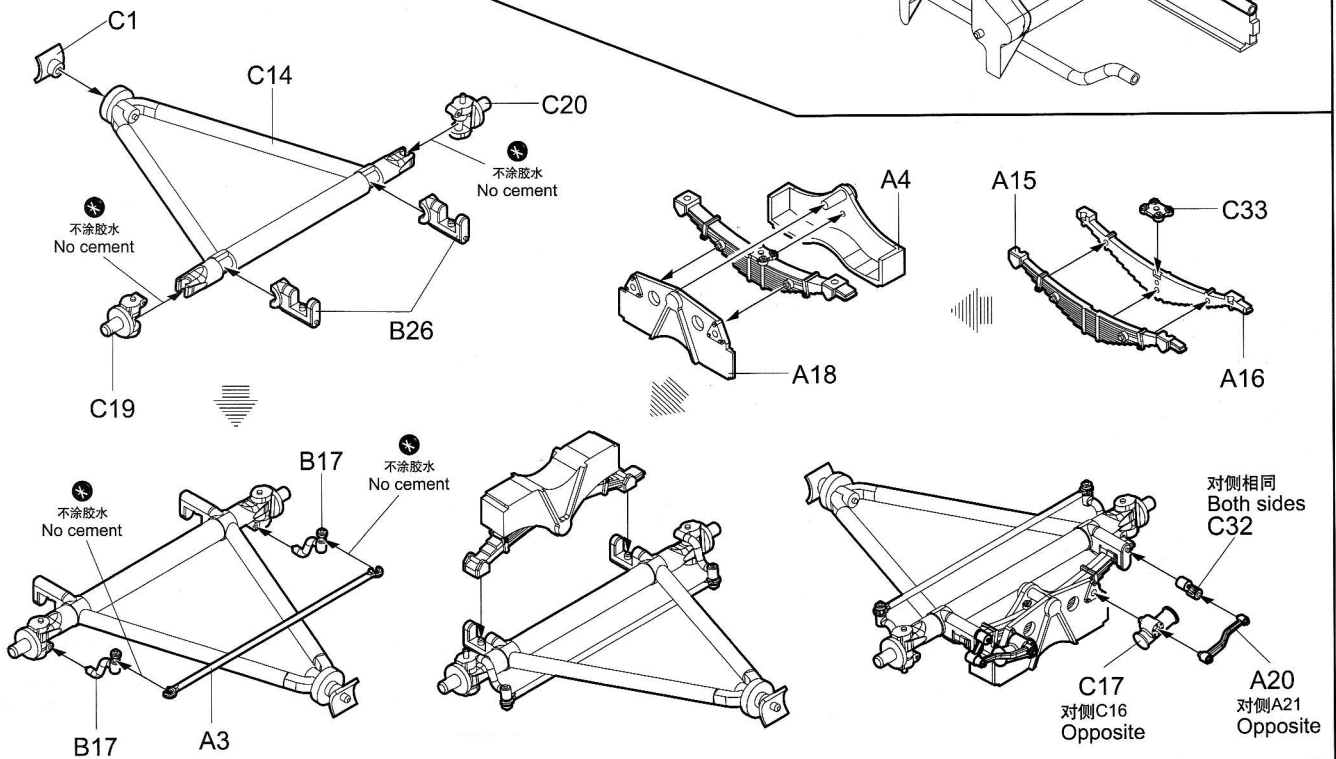


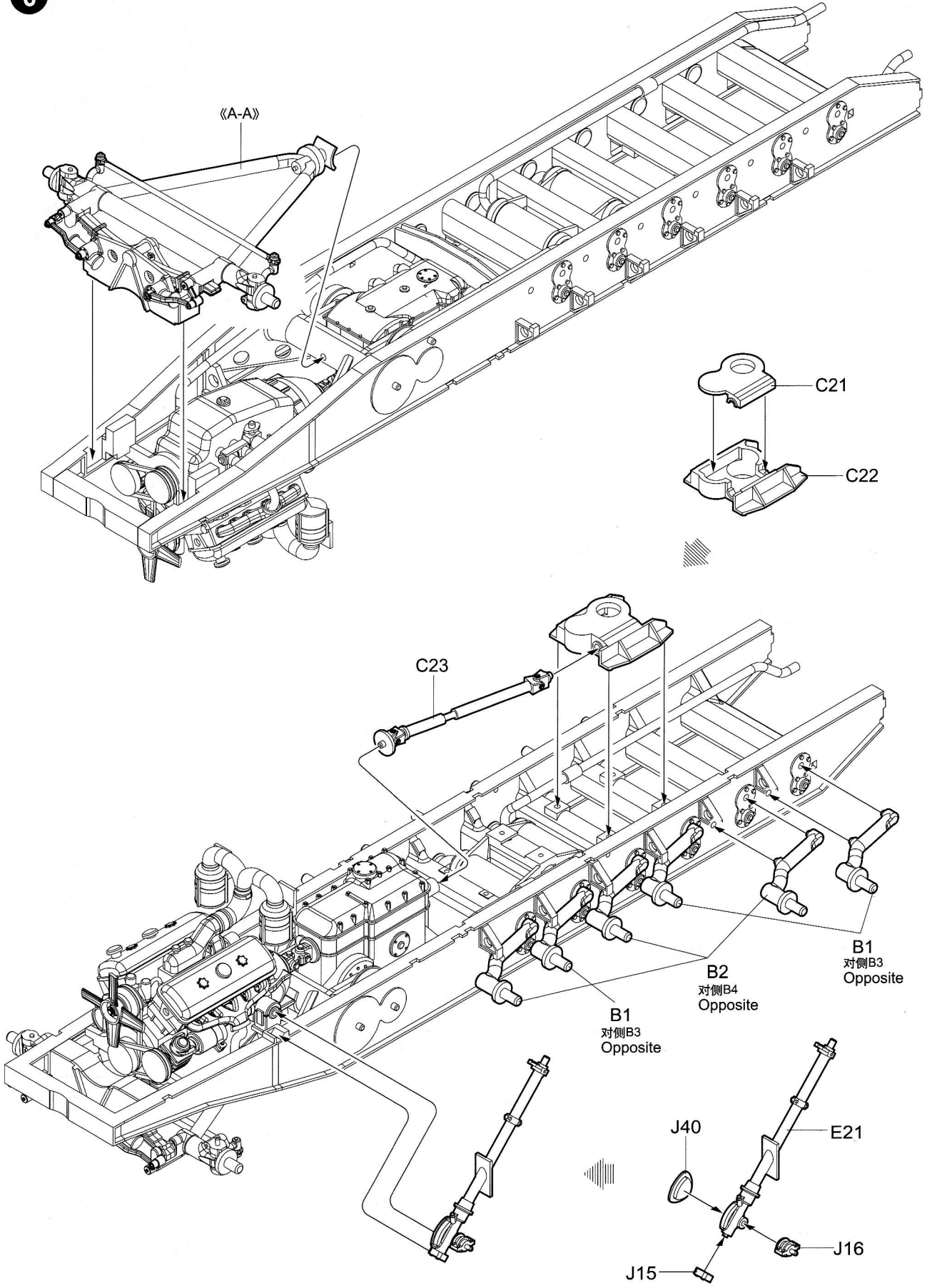
5



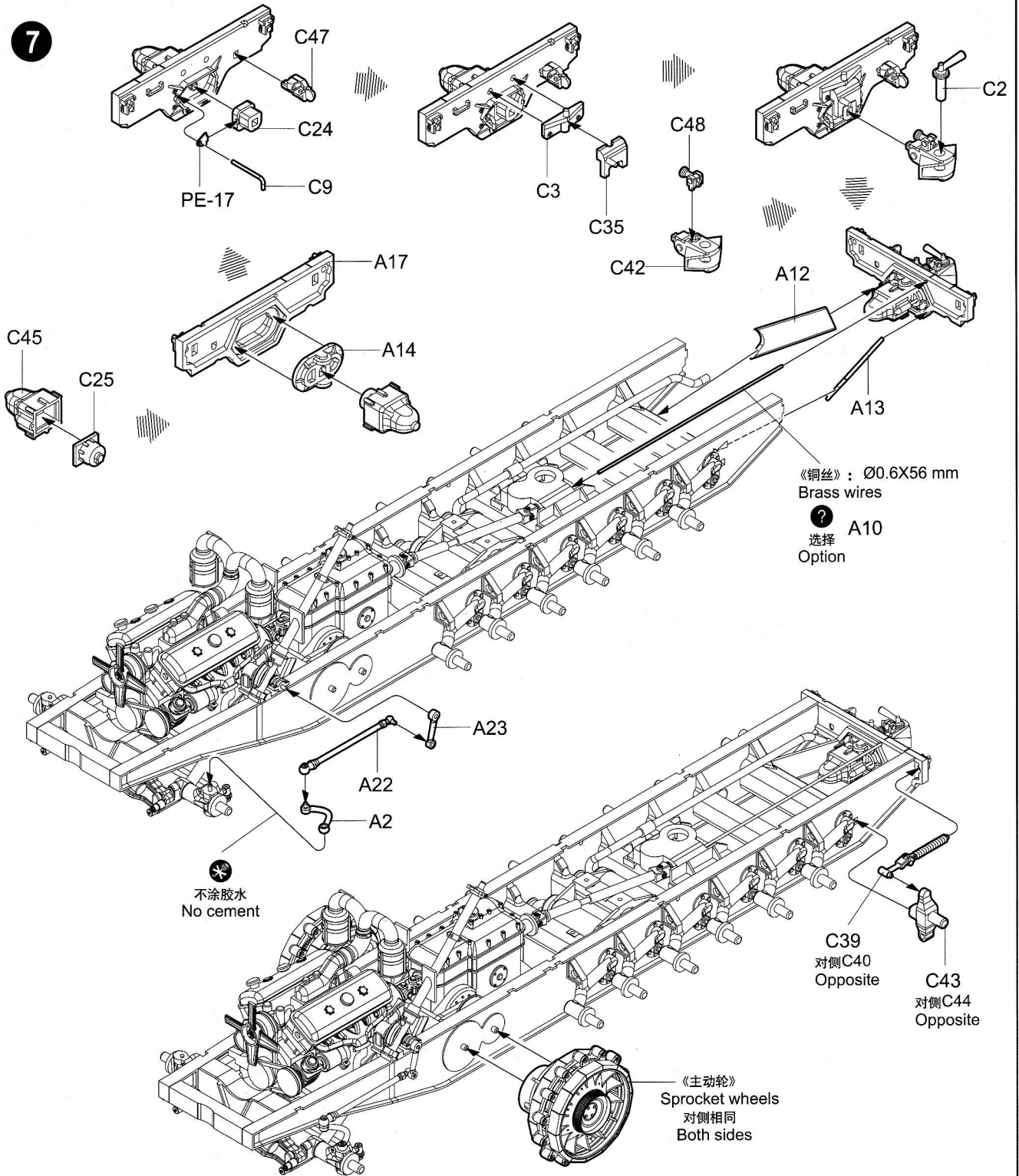
《A-A》

完成示意图  
Install as shown

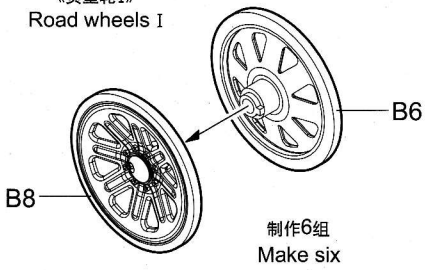




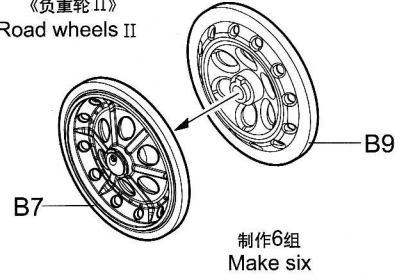
7



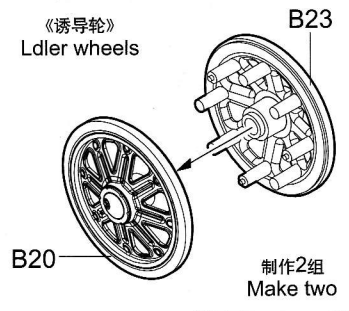
《负重轮 I》  
Road wheels I

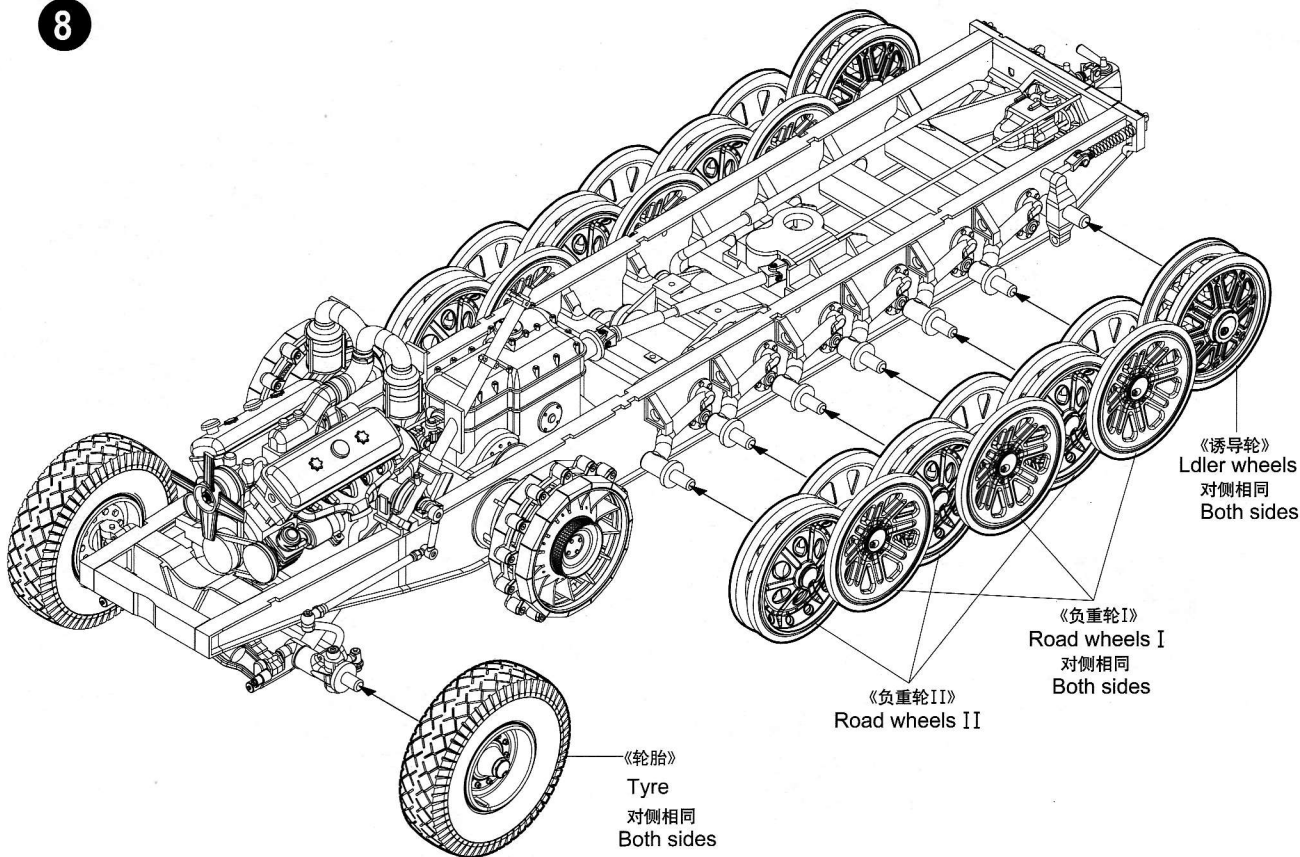


《负重轮 II》  
Road wheels II



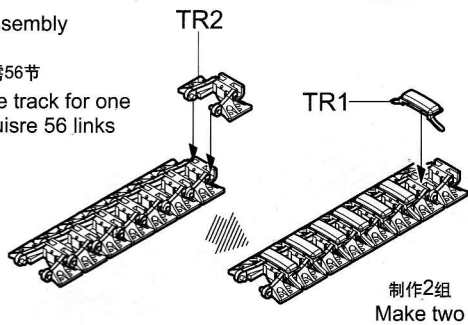
《诱导轮》  
Ldler wheels



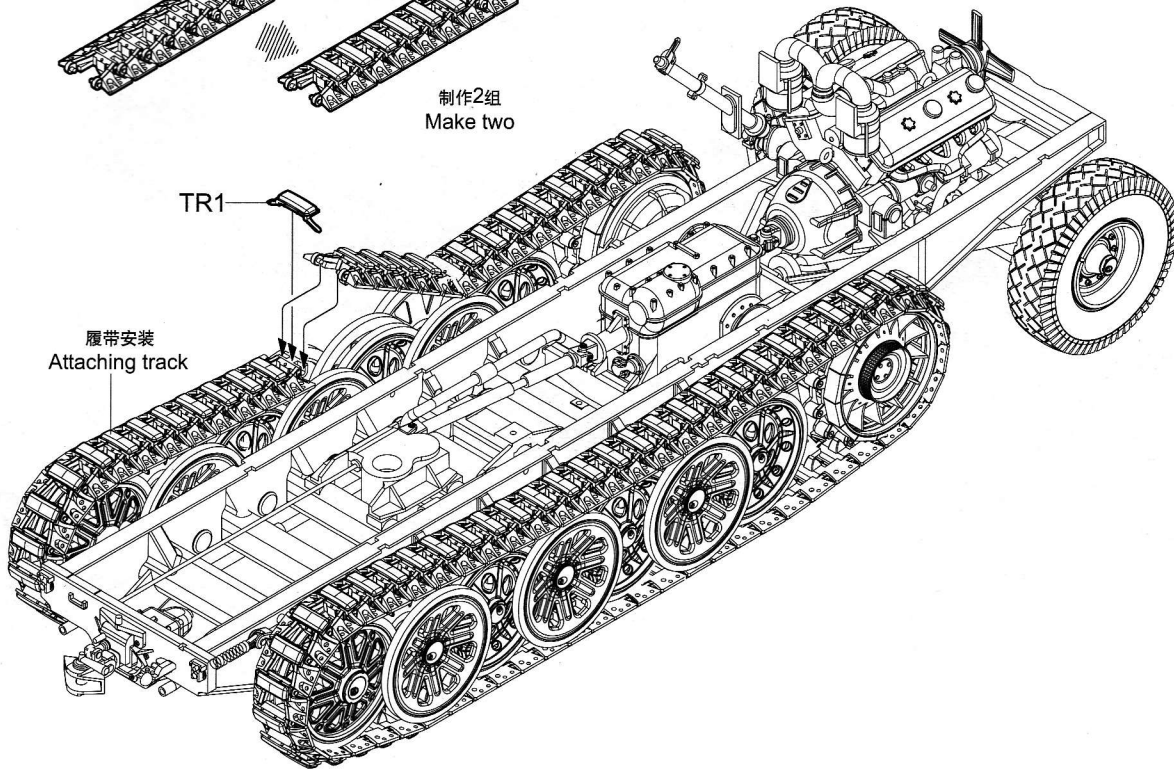


履带组装  
Track assembly

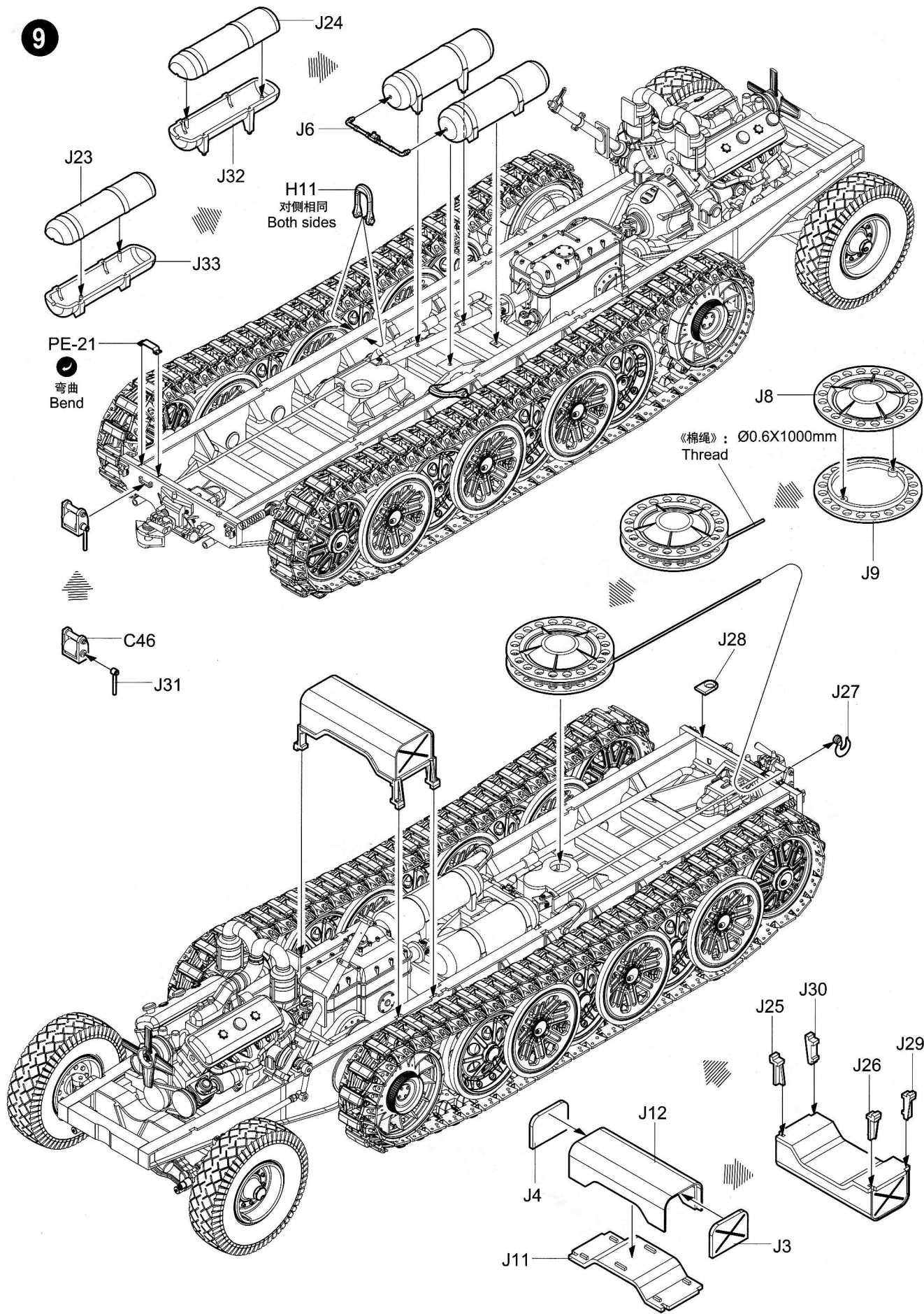
单侧履带需56节  
Complete track for one  
side requires 56 links



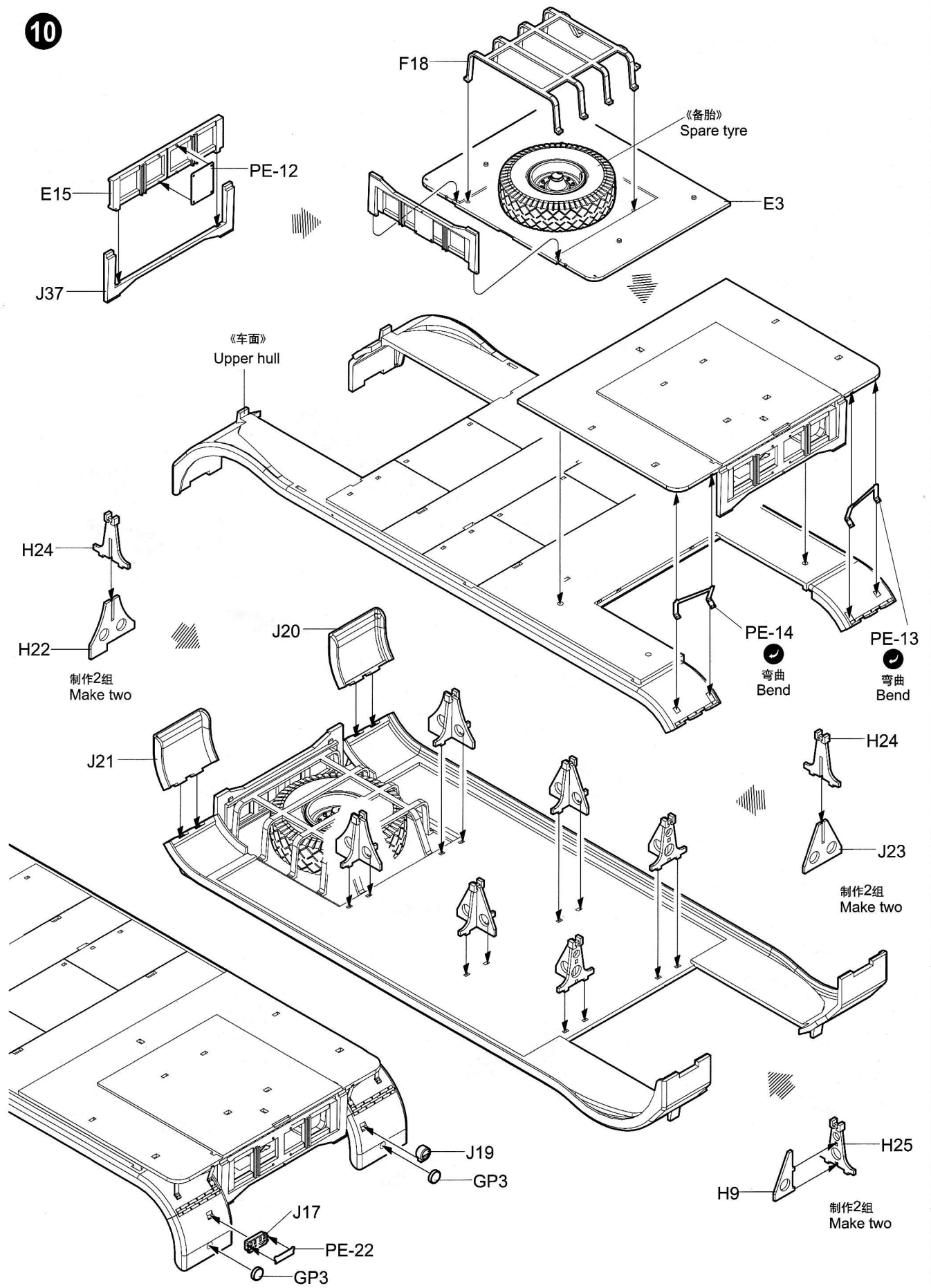
履带安装  
Attaching track



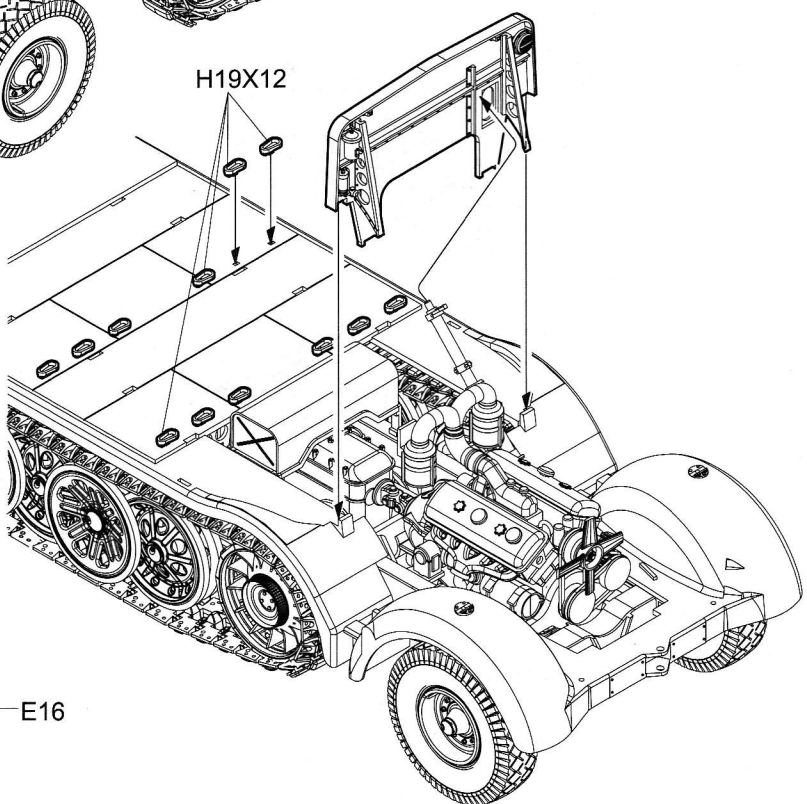
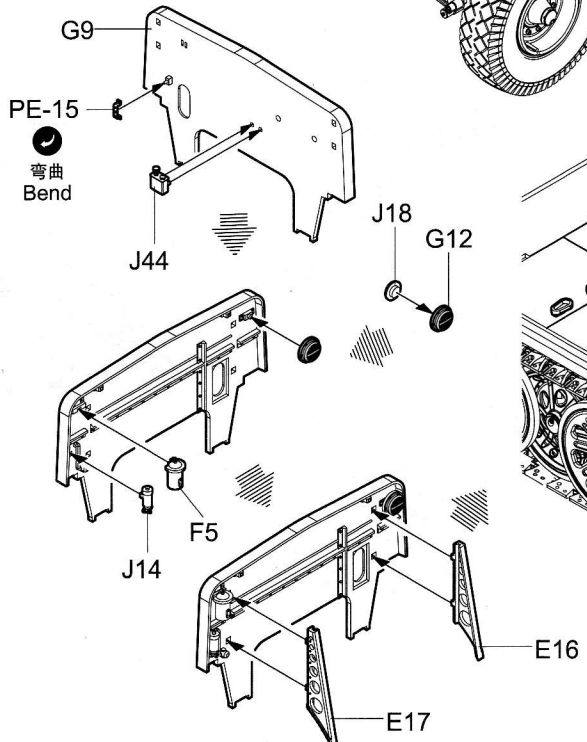
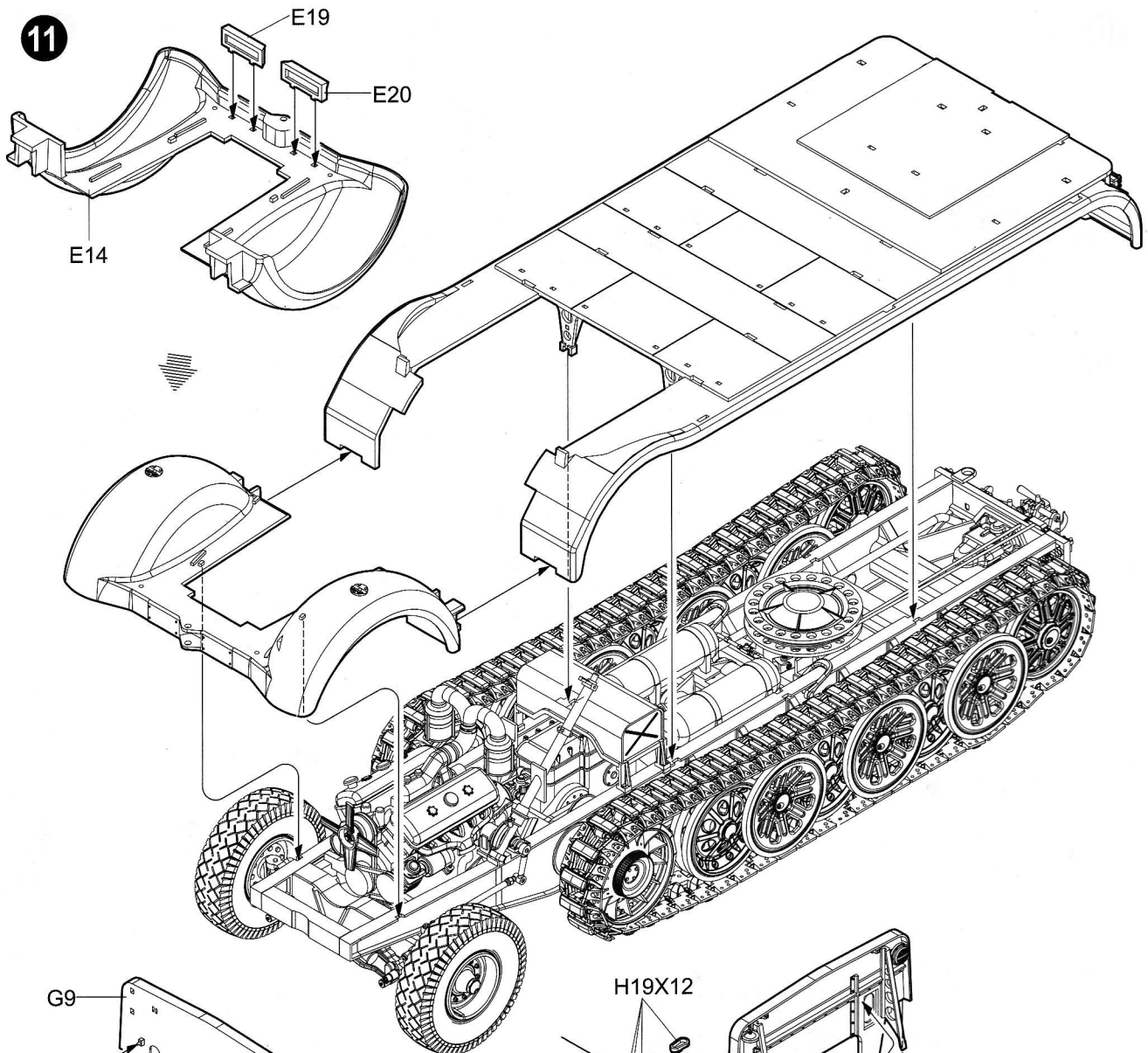
9



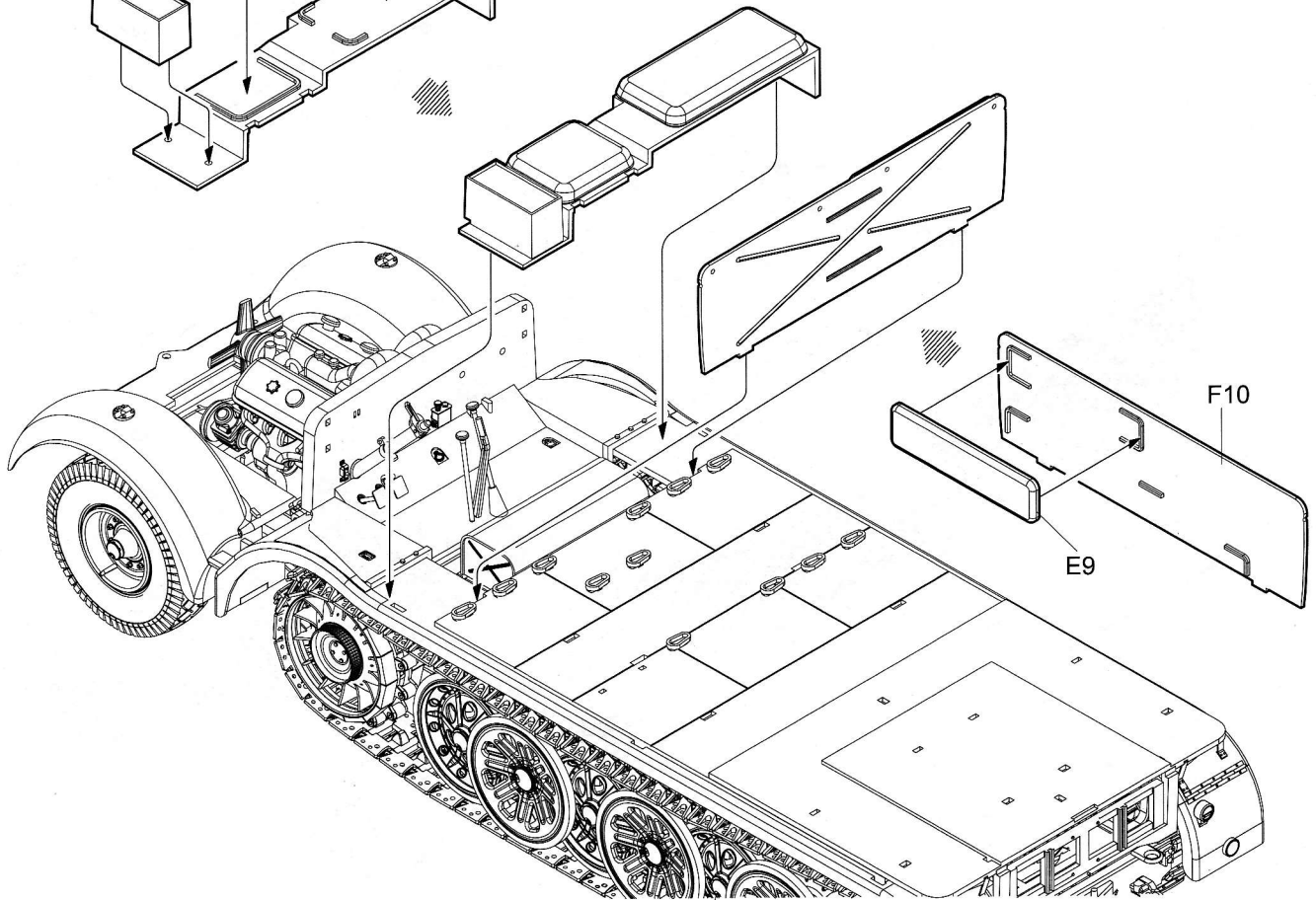
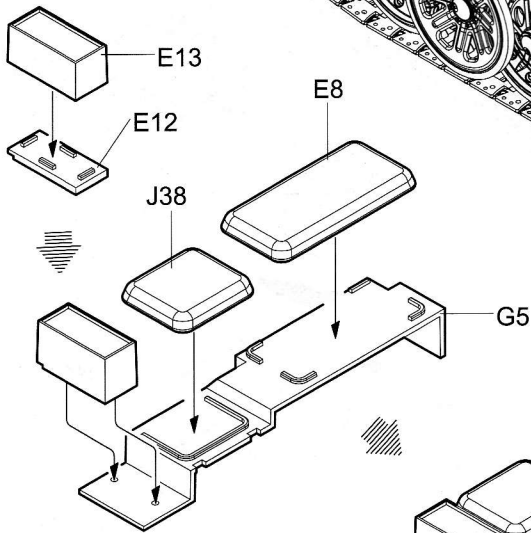
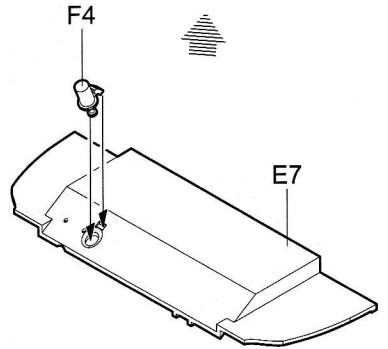
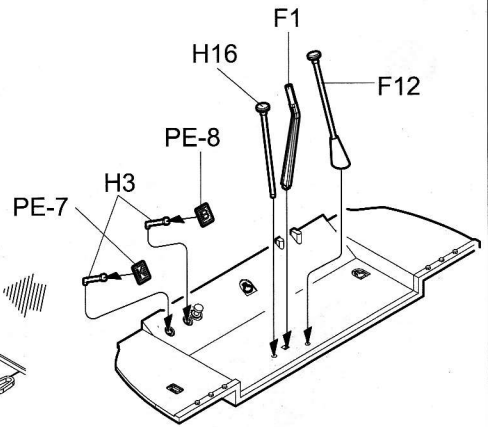
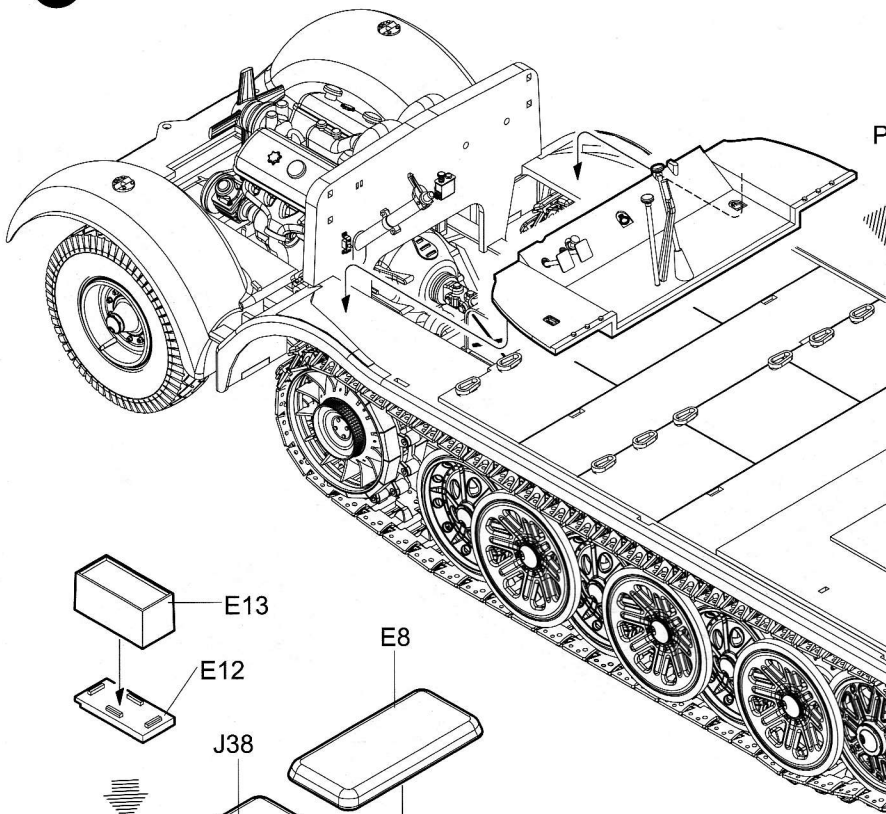
10



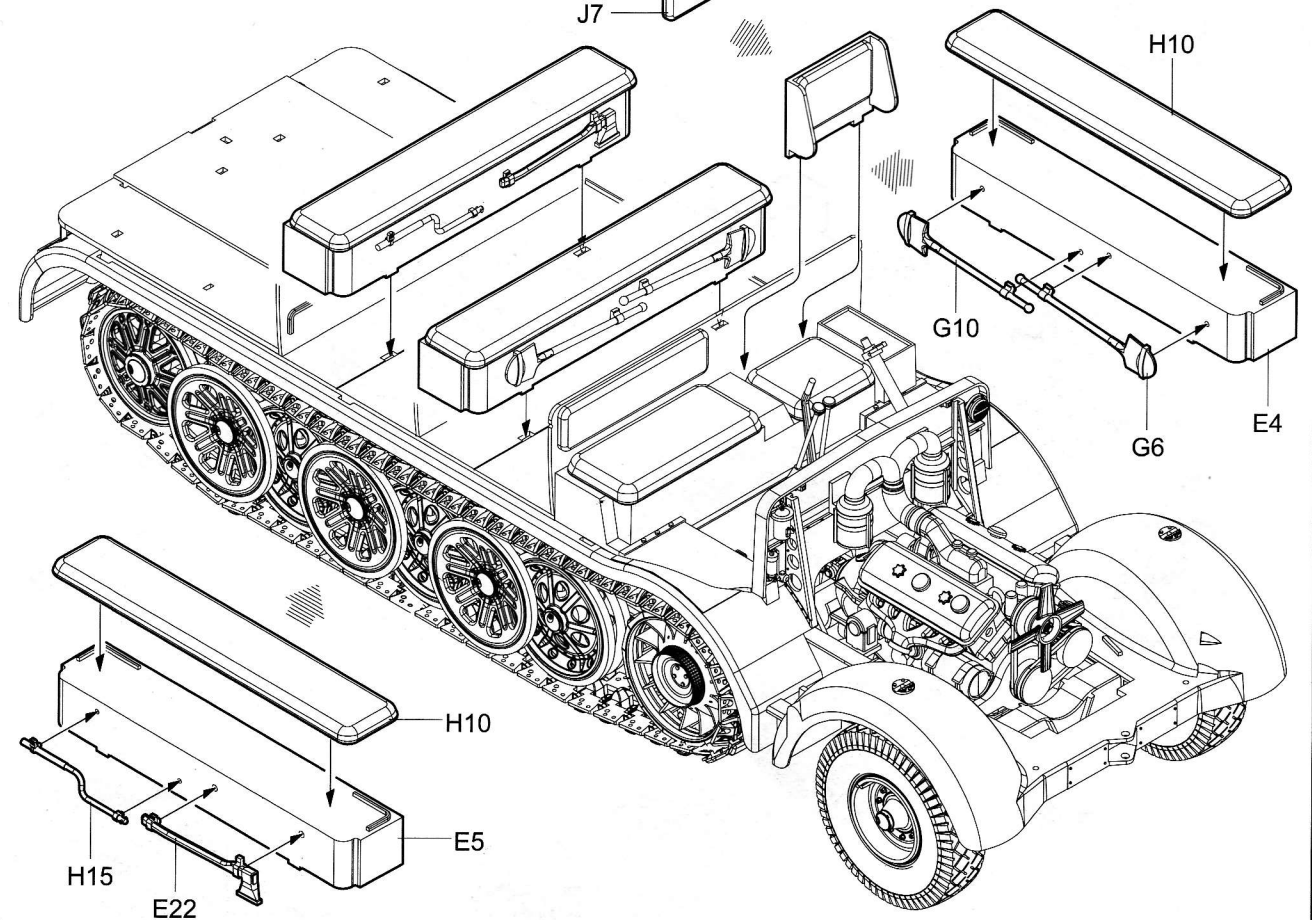
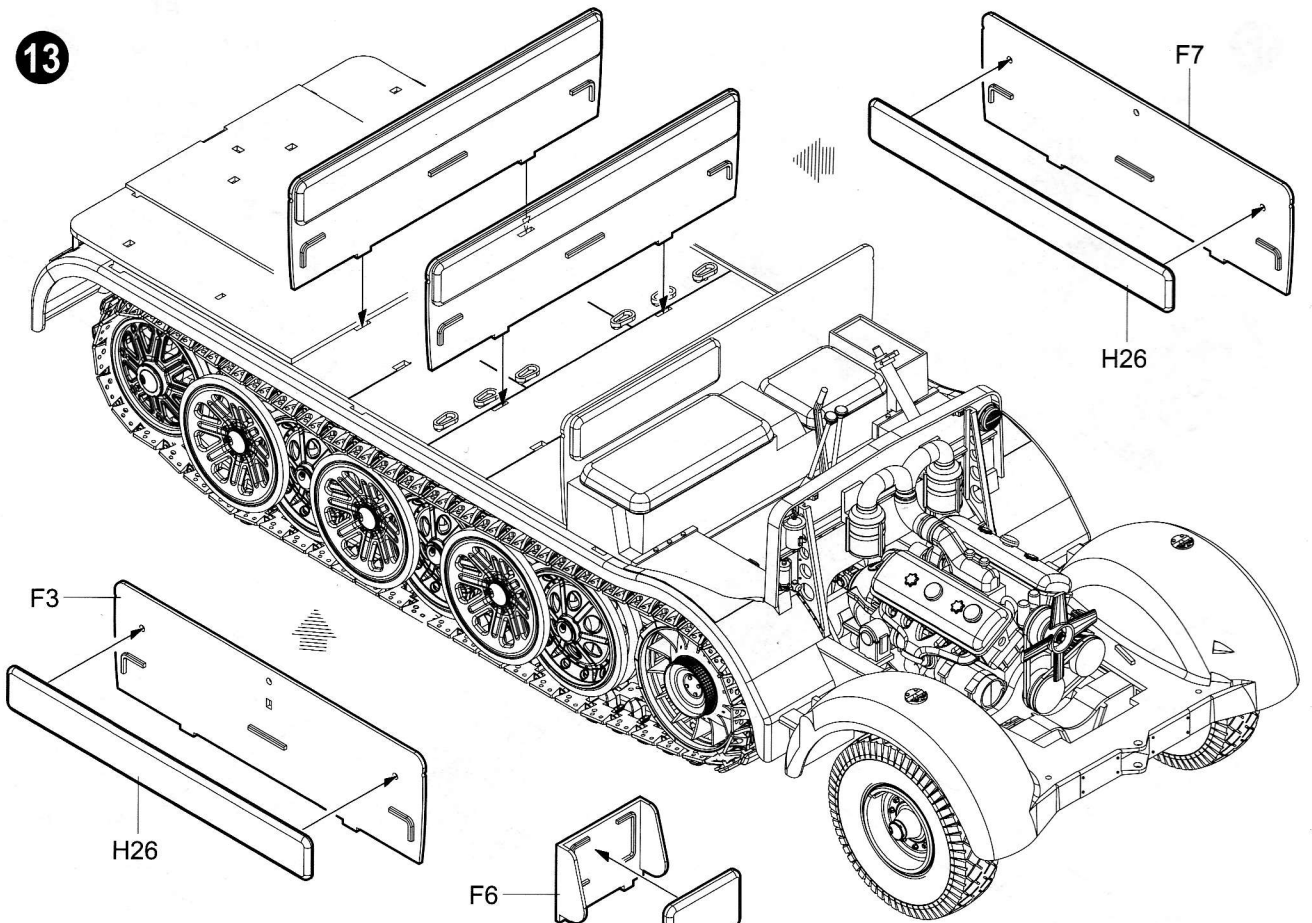
11



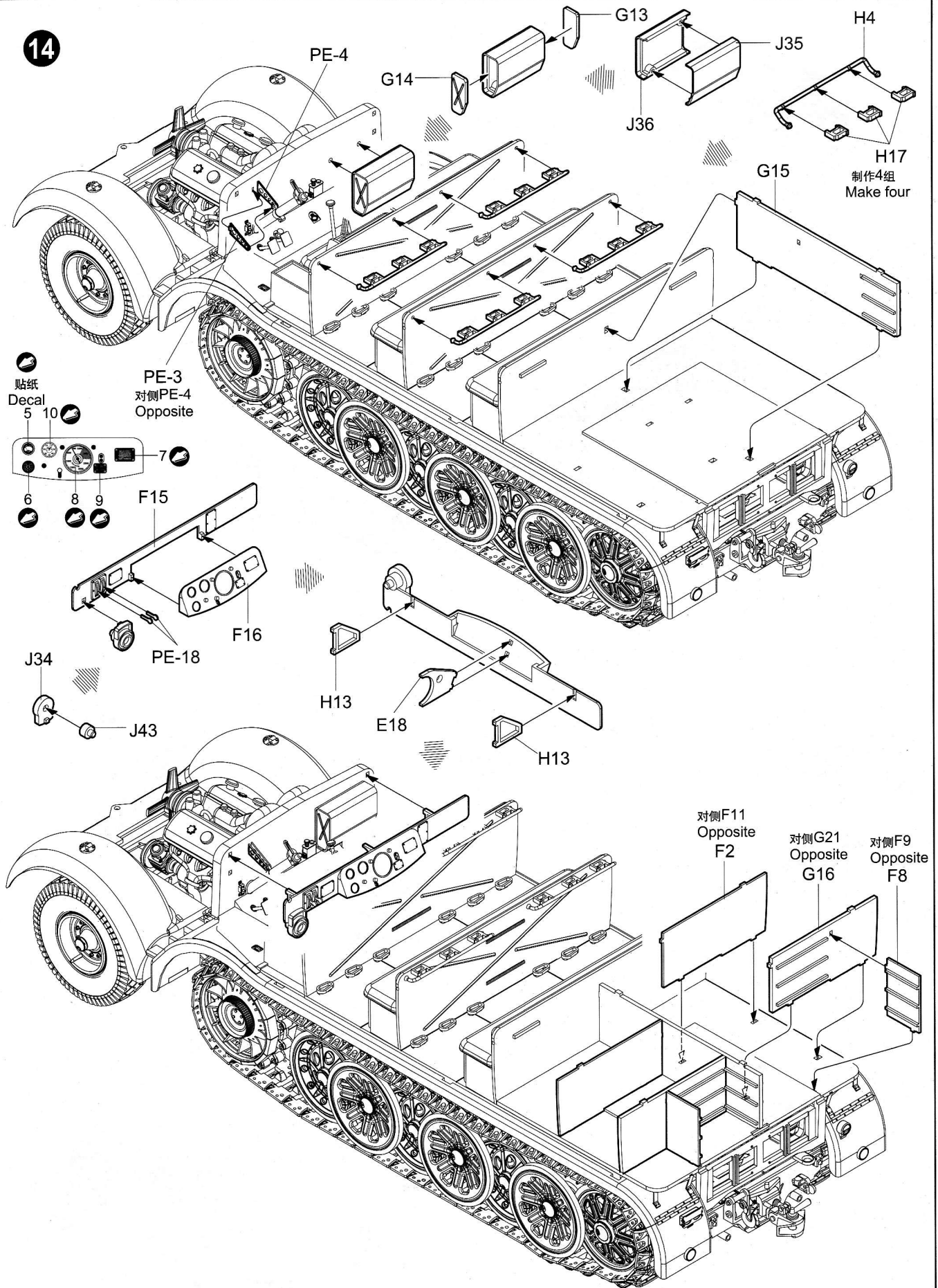
12



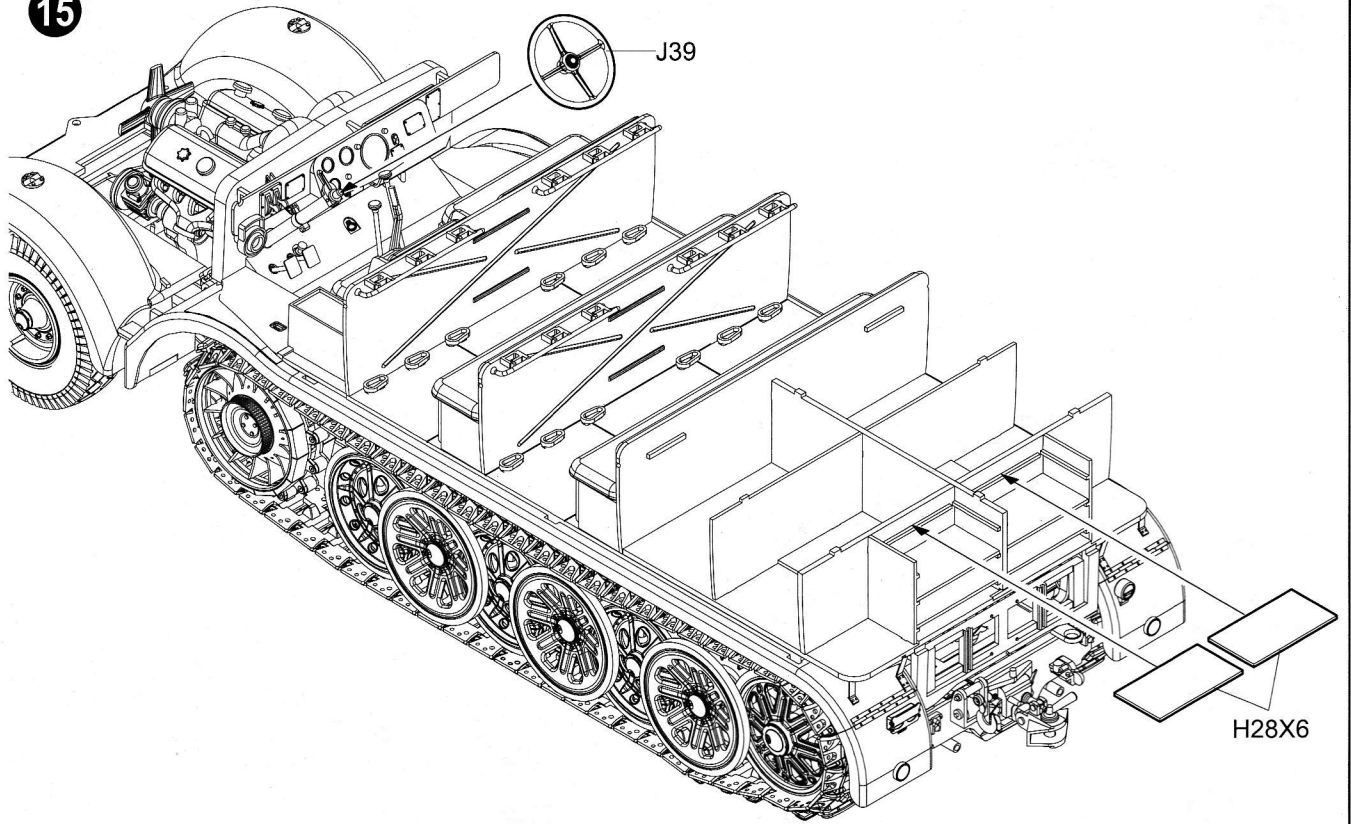
13



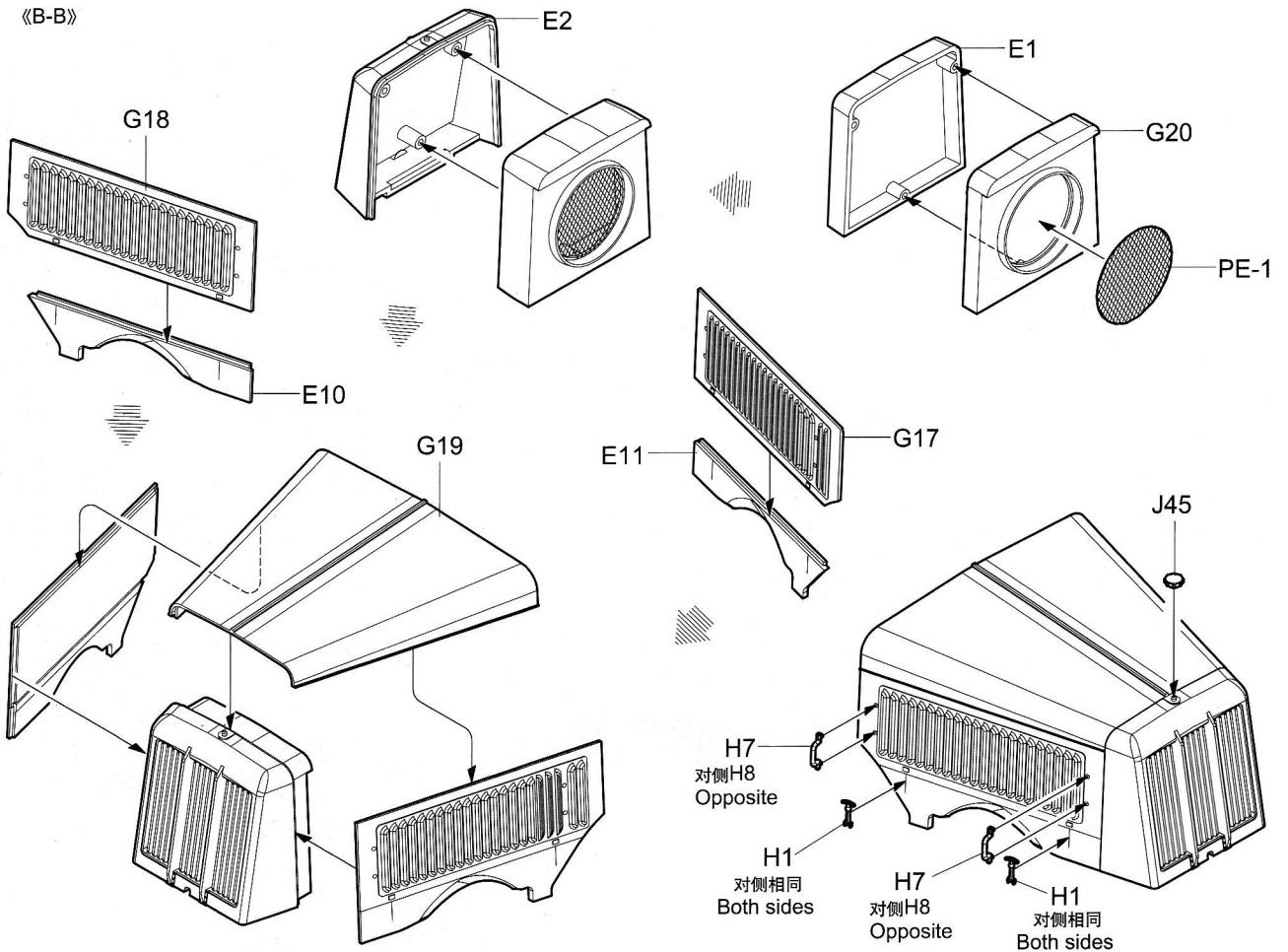
14



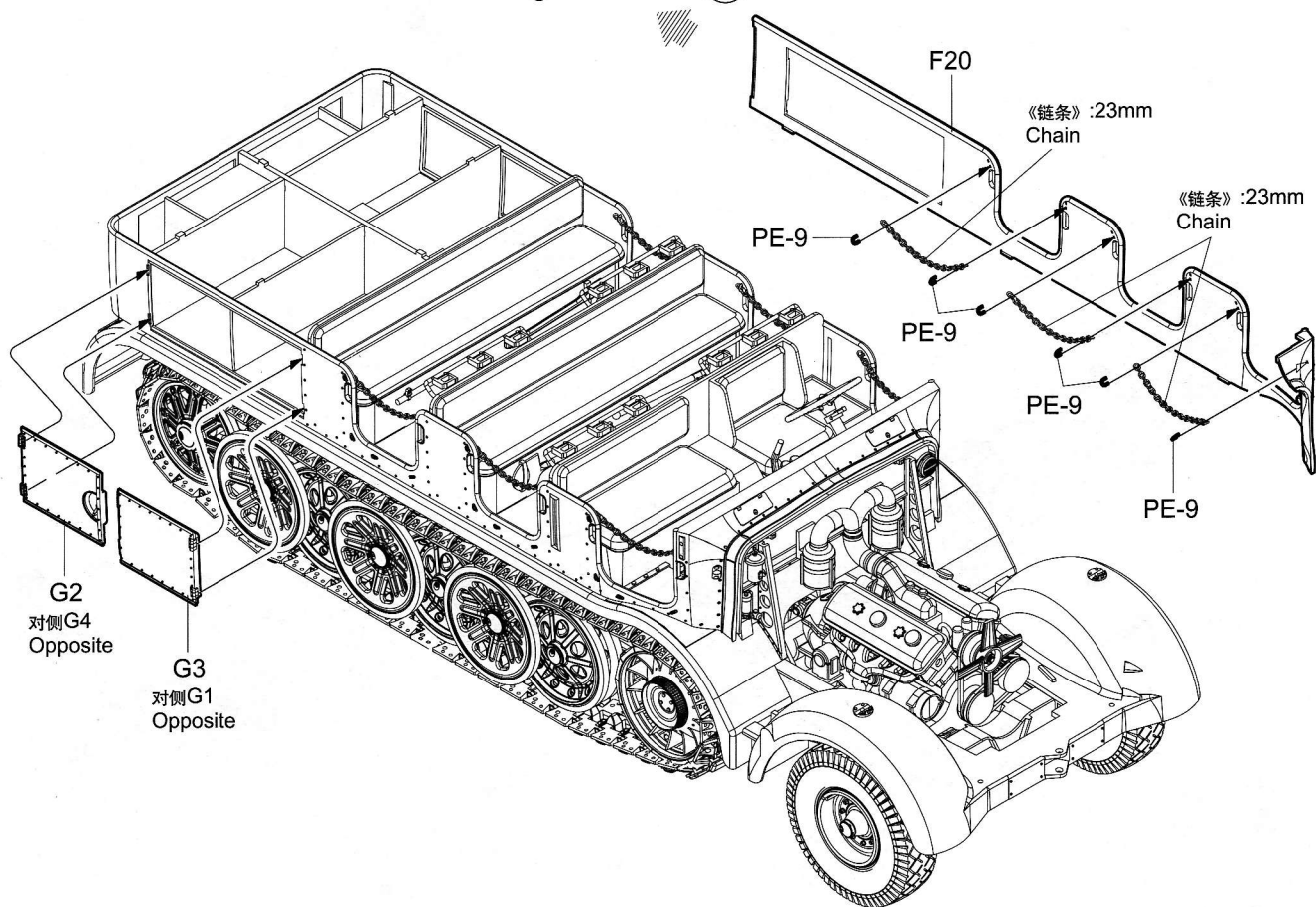
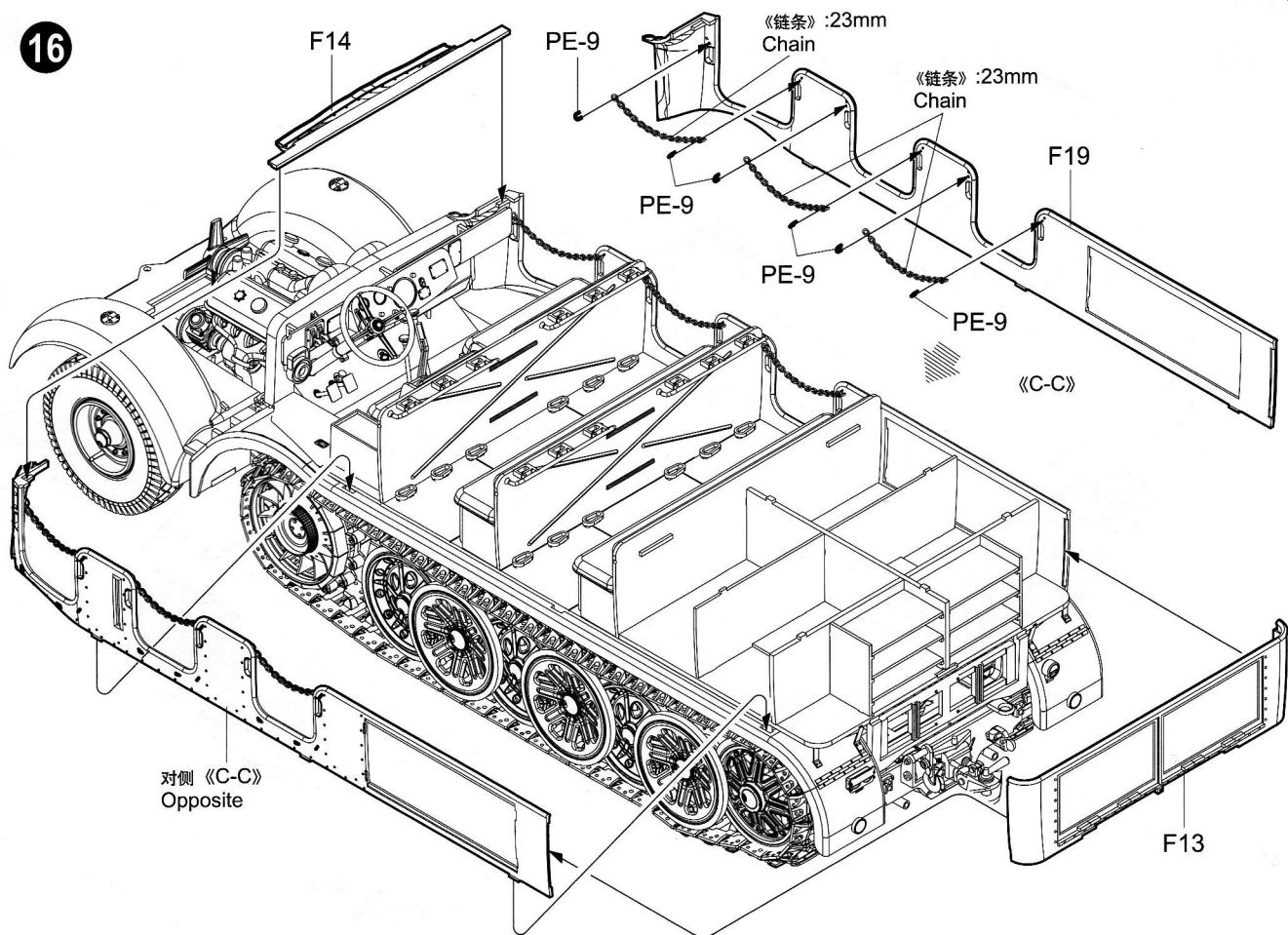
15



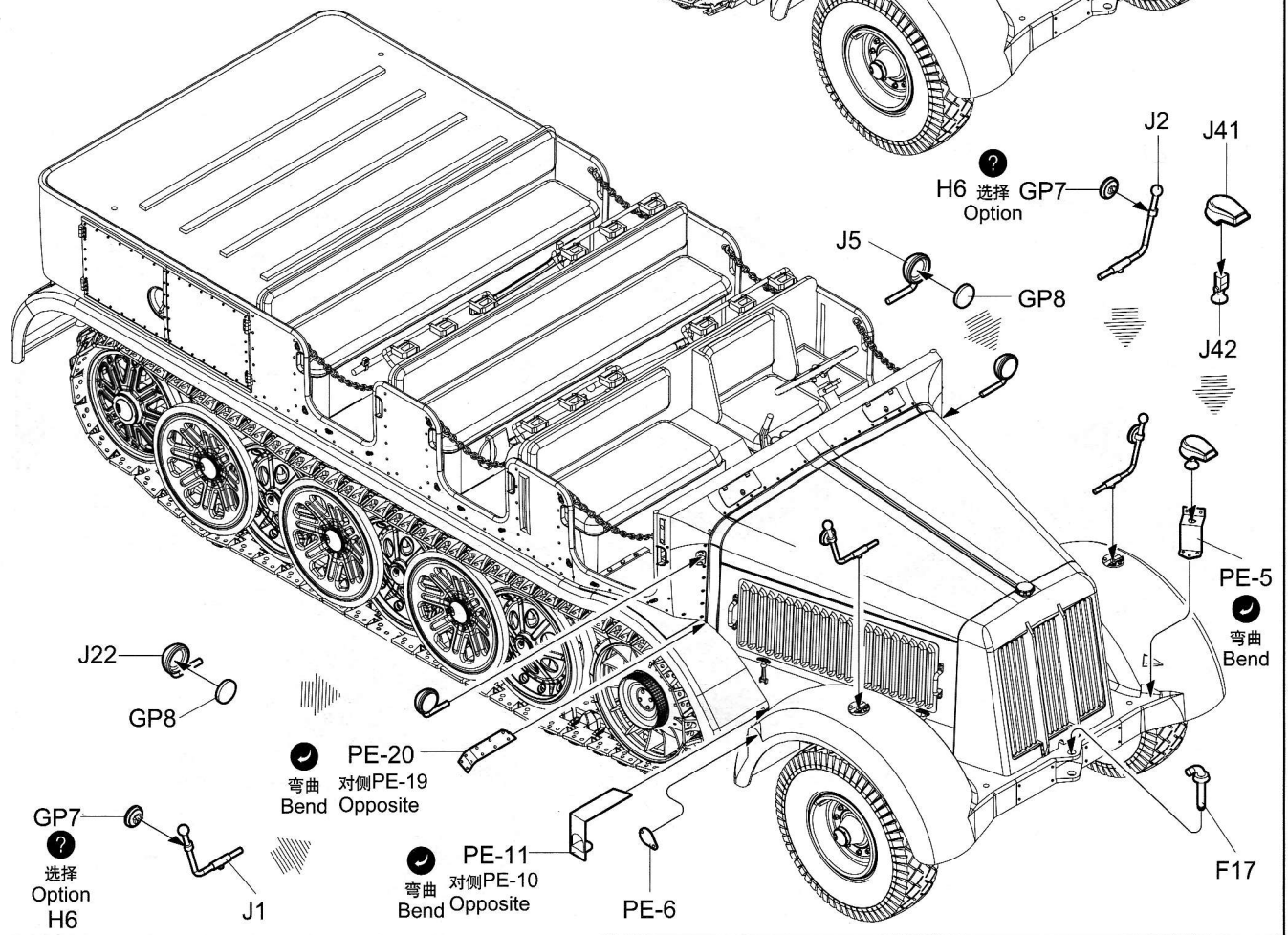
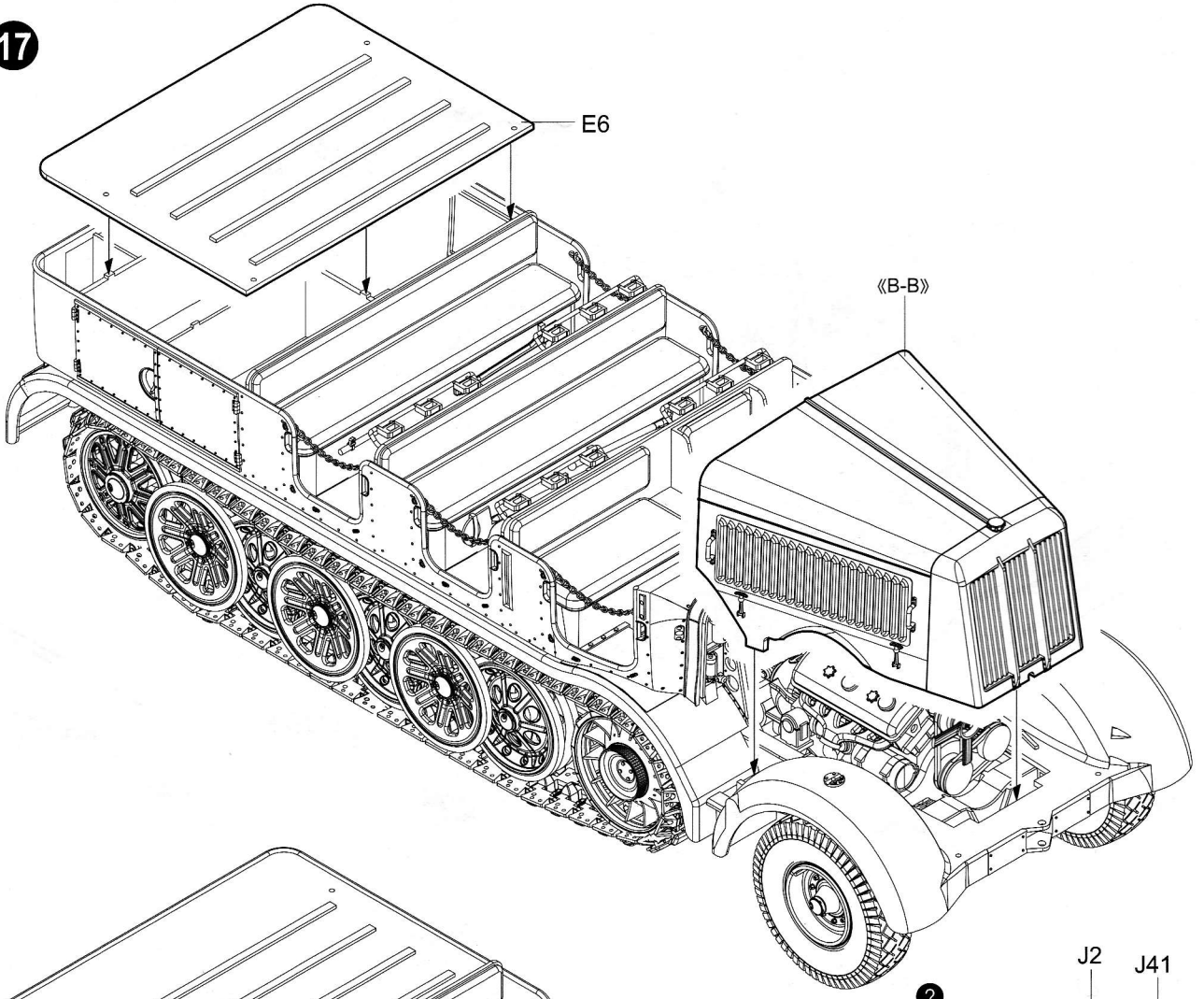
《B-B》



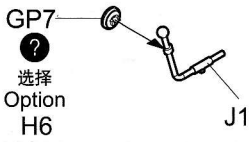
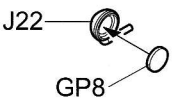
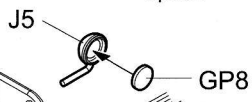
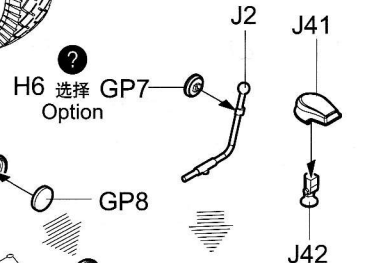
16



17



H6 选择 Option



PE-20  
 弯曲 对侧PE-19  
 Bend Opposite

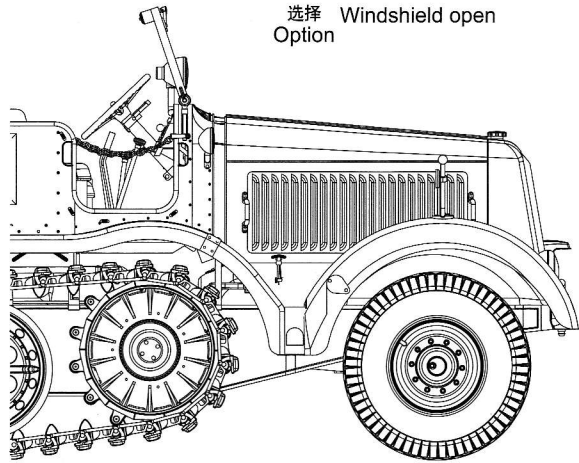
PE-11  
 弯曲 对侧PE-10  
 Bend Opposite

PE-5  
 弯曲  
 Bend

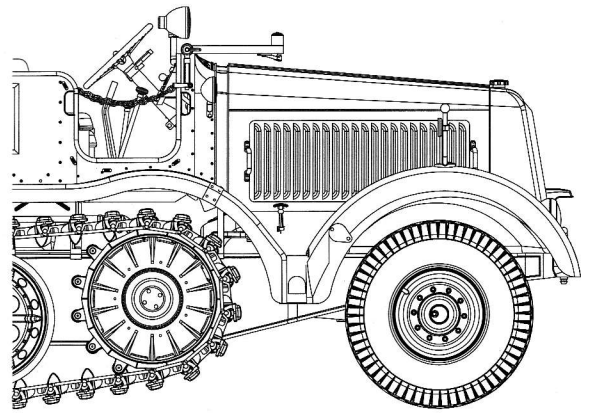
PE-6

F17

② 挡风玻璃挡风状态  
选择 Windshield open  
Option



② 挡风玻璃放下状态  
选择 Windshield closed  
Option



18

