



**LOCKHEED MARTIN**

LOCKHEED MARTIN®, F-117A Aardvark®, associated emblems and logos, and body designs of vehicles are either registered trademarks or trademarks of Lockheed Martin Corporation in the USA and/or other jurisdictions, used under license by Academy Plastic Model Co. LTD.

\* You can download the latest version of an instruction manual for this model by visiting [www.academyhobby.com](http://www.academyhobby.com), clicking the link for 'INSTRUCTION & DOWNLOAD' and entering the item number. 본 제품의 조립 중 궁금한 점은 [www.academy.co.kr](http://www.academy.co.kr) 접속 후 메뉴 '자료실' → '프라모델' 로 이동하여 해당 제품명을 입력하면 최신의 설명서를 확인 할 수 있습니다.

Warning in Assembly of Model Kits  
**조립전의 주의사항**

Take care not to injure yourself while using the modeling tools to cut or trim parts.  
공구를 이용하여 부품을 다듬고 자를 경우 손을 다치지 않도록 주의를 기울여 주십시오



**CAUTION!**  
**-주의-**

**<Read this before you begin>**

- Study the instructions before assembling.
- Check the fit of each piece before cementing into place.
- Never use cement or paint near open flame.
- Do not use too much cement to join parts.
- Open a window or make area well ventilated when cement or paint is in use.
- Tear up and throw away the empty plastic bags to avoid danger of suffocation for little children.

**<조립하기 전에>**

- 부품을 조립하기 전에 설명서를 잘 읽어본 후 조립한다.
- 접착하기 전에 부품을 맞추어 확인한 후 조립한다.
- 부품을 자를 때에는 칼이나 니퍼로 깨끗이 잘라준다.
- 접착제를 사용할 곳과 사용하지 않는 곳에 주의하고 너무 많이 바르지 않도록 한다.
- 에나멜 페인트나 접착제를 사용할 때에는 창문을 열어 환기를 시키고 화기를 멀리한다.
- 사용 후 남은 부품은 어린이의 손에 닿지 않도록 잘 처리한다.

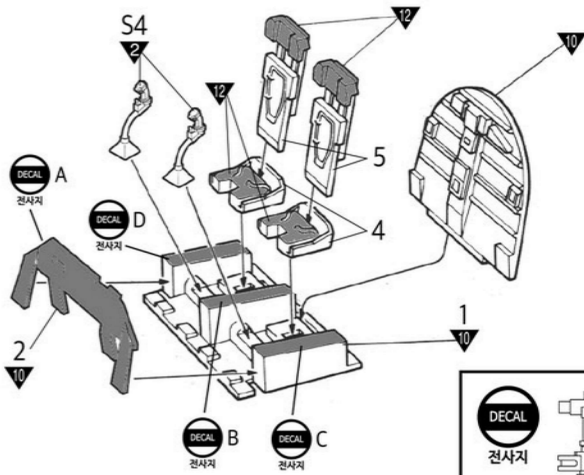
CEMENT 접착제	CEMENT 접착제 금지	X2 수만큼 조립	DECAL 전사지	BALLAST 무게추	PE 애칭	FILL 채움
CUT 잘라냄	OPTION 선택	OPPOSITE 반대측	HOLE 뚫어줌	CAUTION 주의	INSTANT CEMENT 순간 접착제	VER.1 버전

PAINT INDEX	Humbrol		GSI Creos		Lifecolor	Testor/ Model Master		Revell		Vallejo		AK Interactive	MAIN COLOR
	Enamel	Acryl	Aqueous Hobby Color	Mr.Color		Enamel	Acryl	Enamel	Acryl	Model Color	Model Air		
1 WHITE FS17875	22	22	H316	316	LC51	1745	4696	32104	36104	842		11868	흰색
2 FLAT BLACK FS37038	33	33	H12	33	LC02	1749	4768	32108	36108	950	57	11029	무광 검은색
3 SILVER	11	11	H8	8	LC74	2914	4678	32190	36190	997	63	11209	은색
4 STEEL	53	53	H18	28	LC76	1795	4681	32191	36191	863	72	11210	스틸
5 BURNT IRON			H76	61									번트 아이언
6 GUNSHIP GRAY FS36118	125	125	H305	305	UA022	1723	4752			867	52	11881	건십 그레이
7 MEDIUM GREEN FS34102	117	117	H303	303	UA002	1713	4734	32361	36361	890	92	11342	미디어 그린
8 FOREST GREEN FS34079	91	91	H309	309	UA091	1710	4726	32167	36167	980	20	11346	포레스트 그린
9 BROWN FS30219	119		H310	310	UA015	1742	4709			874	26		브라운
10 DARK GULL GRAY FS36231	140		H317	317	UA033	1740	4755	32179	36179	991		11884	다크 걸 그레이
11 GLOSS BLACK	21	21	H2	2	LC72	1747	4695	32107	36107	861		11029	유광 검은색
12 GLOSS RED	19	19	H3	3	LC56	1503	4632	32131	36131	957	84	11088	유광 빨간색
13 GLOSS YELLOW	188		H329	329	LC53	1707	4683	32112	36112	953	2	11045	유광 노란색
14 CLEAR RED	1321		H90	47			4630			934		11213	투명 빨간색
15 CLEAR BLUE	1320		H93	50			4658			938		11214	투명 파란색
16 OLIVE DRAB	155	91	H304	304	UA003	1711	4728	32146	36146	887	43	11860	올리브 드랍

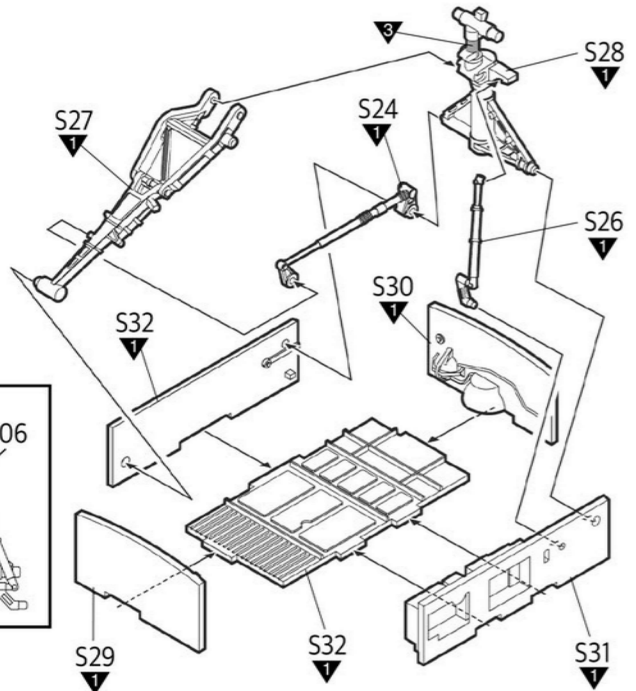
# MANUAL 1

# 12360 1/48 USAF F-111<sup>®</sup> A Aardvark<sup>®</sup> "Vietnam War"

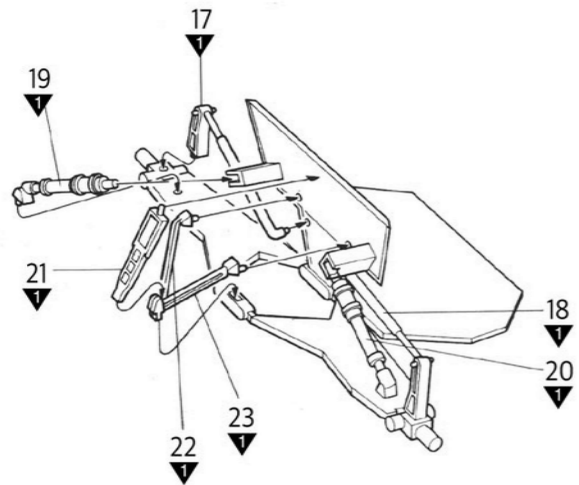
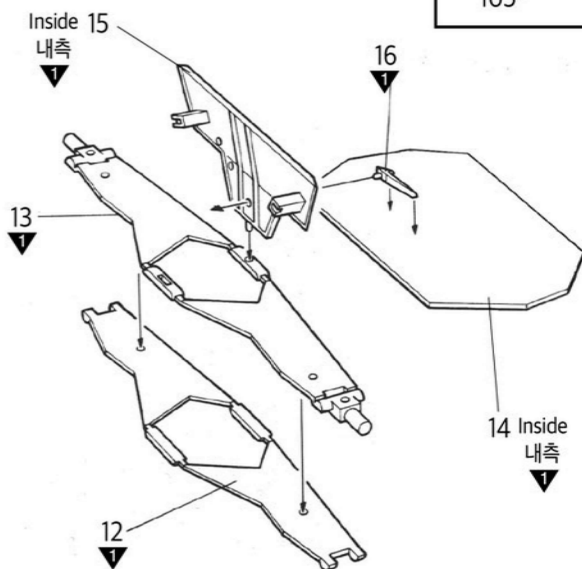
**1** CEMENT  
접착제 사용



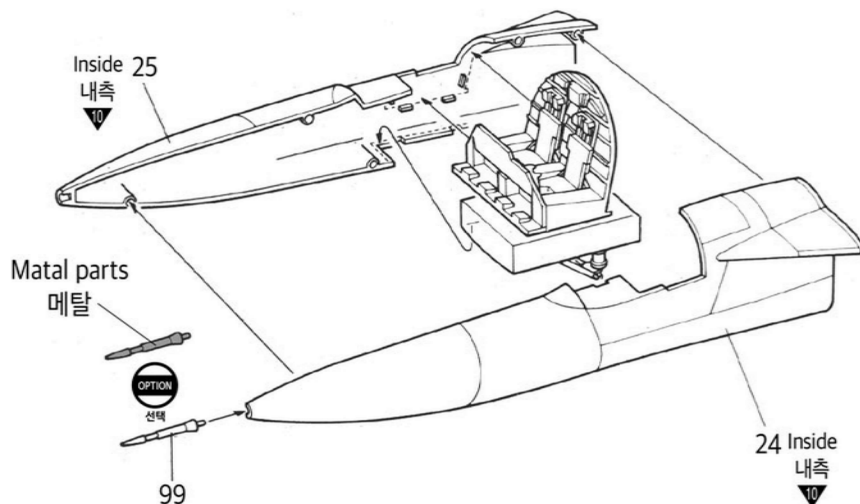
**2** CEMENT  
접착제 사용



**3** CEMENT  
접착제 사용



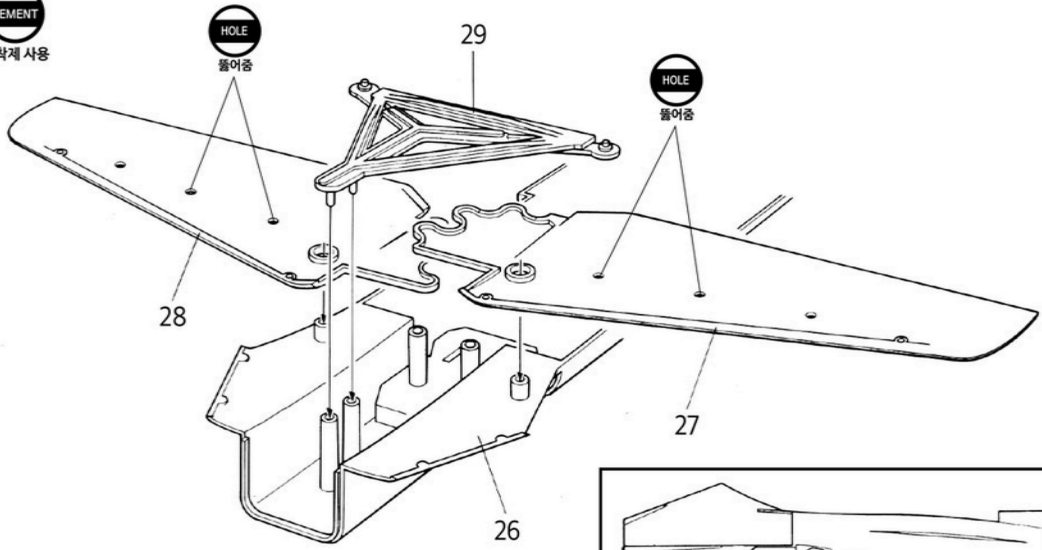
**4** CEMENT  
접착제 사용



5

CEMENT

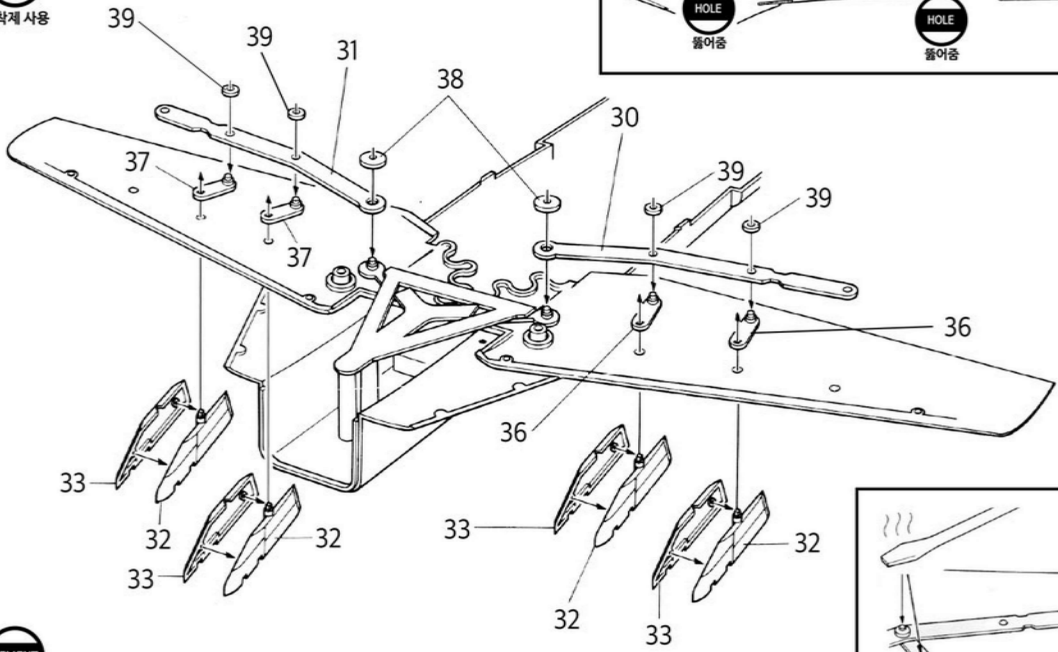
접착제 사용



6

CEMENT

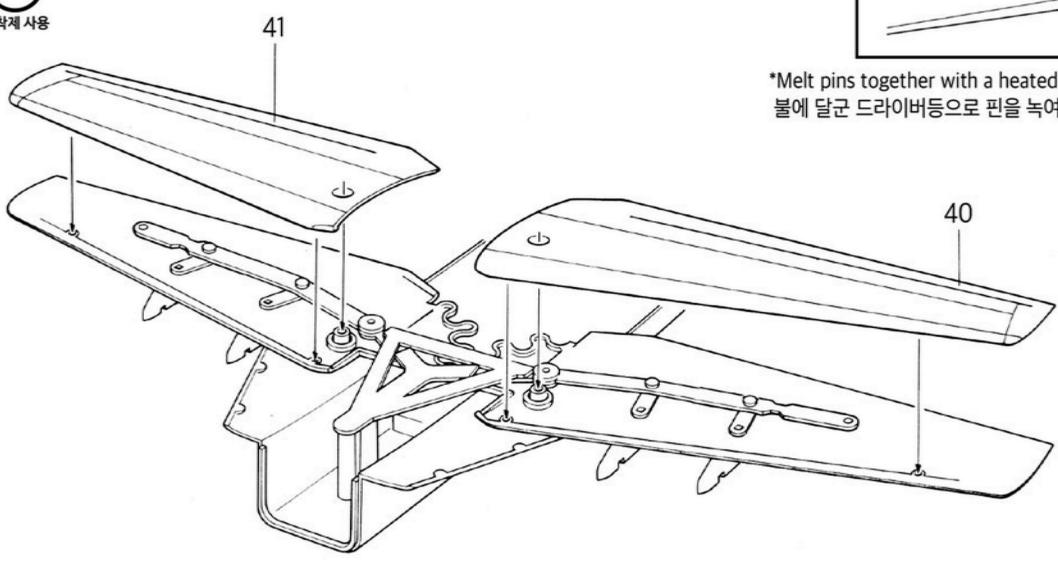
접착제 사용



7

CEMENT

접착제 사용

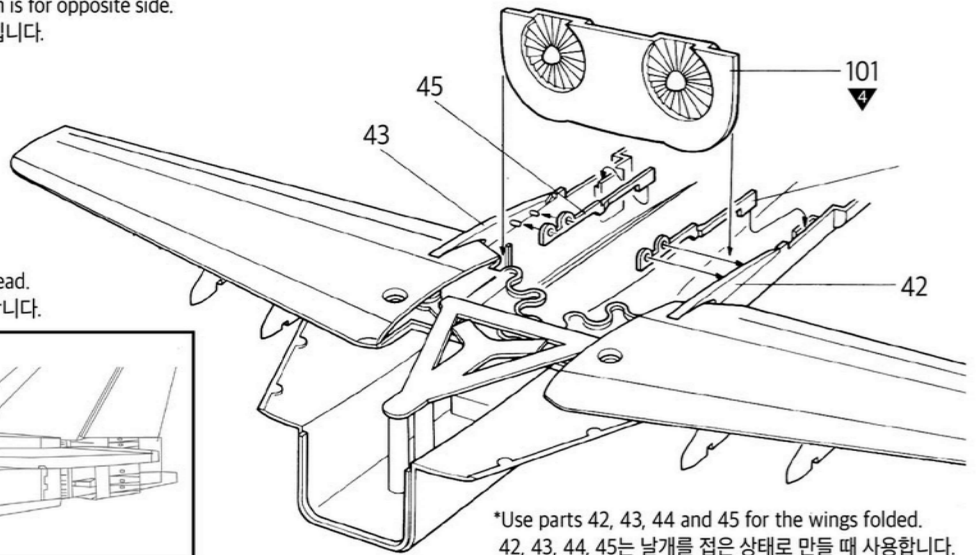


\*Melt pins together with a heated screw driver.  
 불에 달군 드라이버등으로 핀을 녹여 고정시킬 수 있습니다.

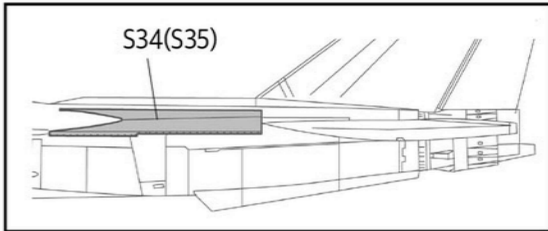
8



\*( ) part shown is for opposite side.  
( )는 반대편 입니다.

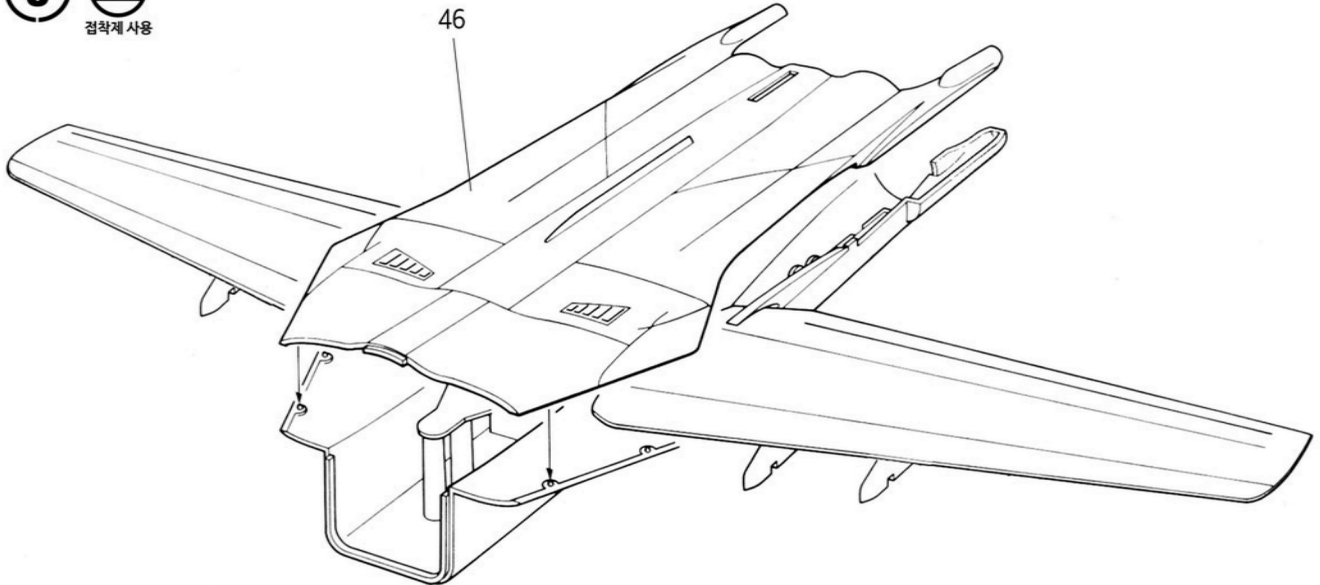


\*Use parts S34 and S35 for the wings spread.  
S34, S35는 날개를 편 상태로 만들 때 사용합니다.

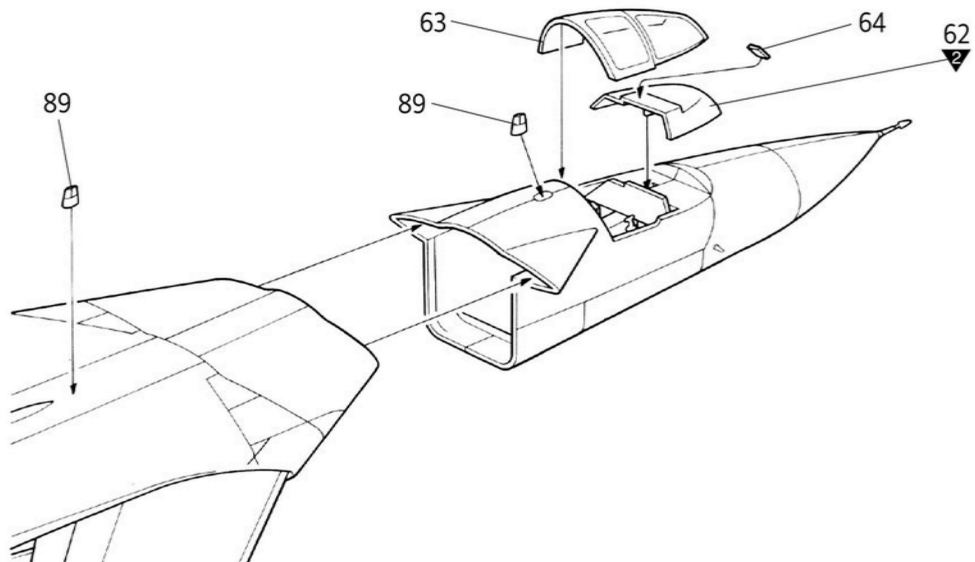


\*Use parts 42, 43, 44 and 45 for the wings folded.  
42, 43, 44, 45는 날개를 접은 상태로 만들 때 사용합니다.

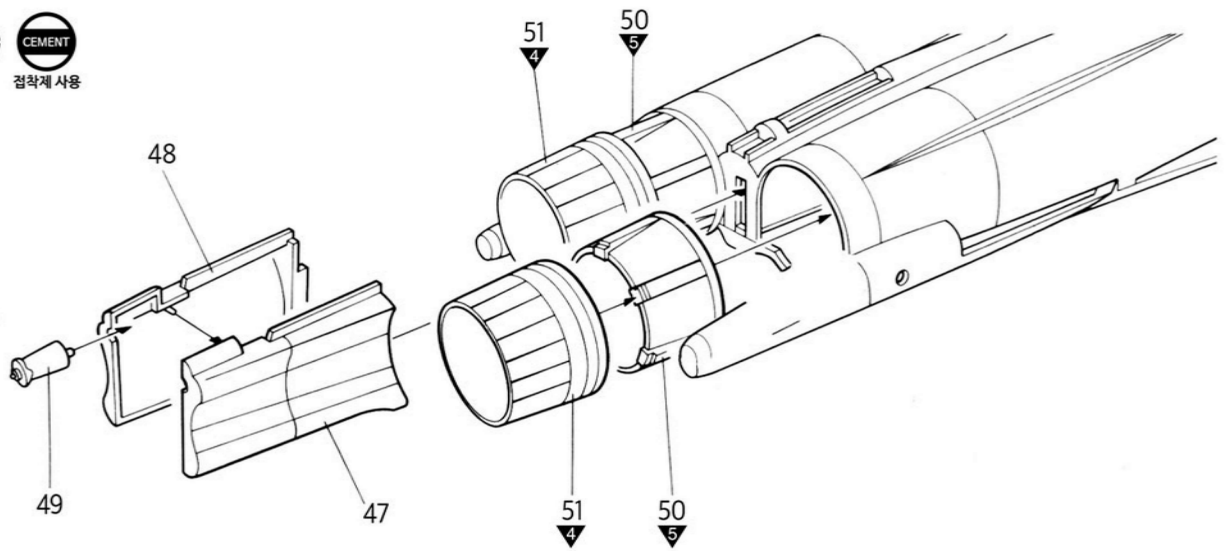
9



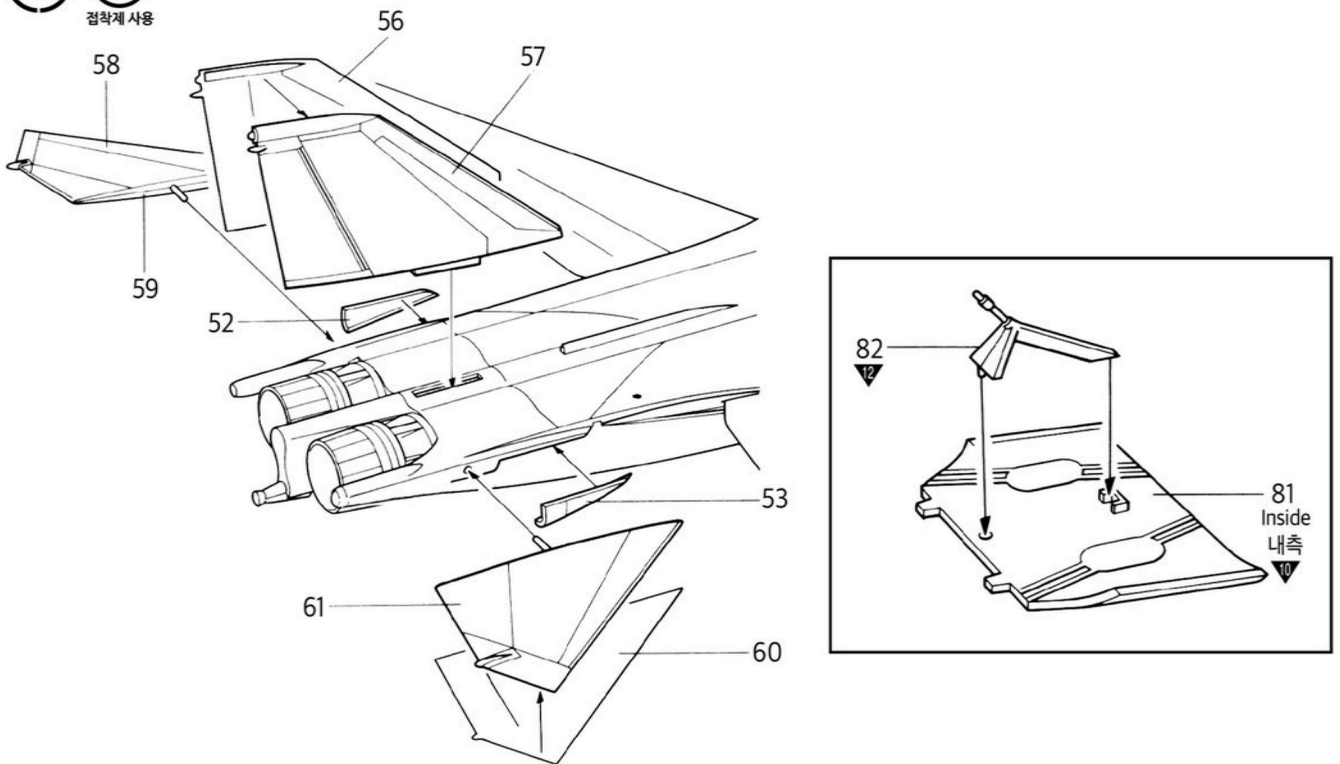
10



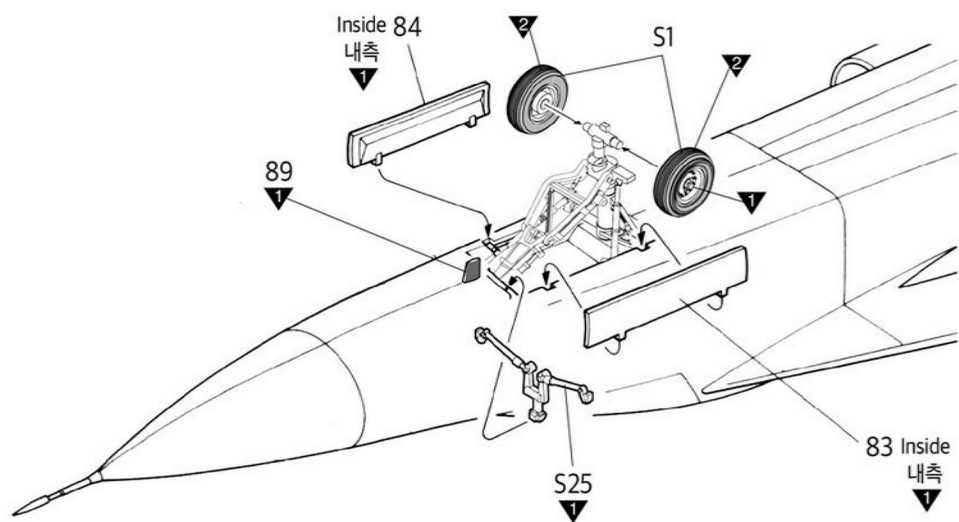
**11** CEMENT  
점착제 사용



**12** CEMENT  
점착제 사용



**13** CEMENT  
점착제 사용

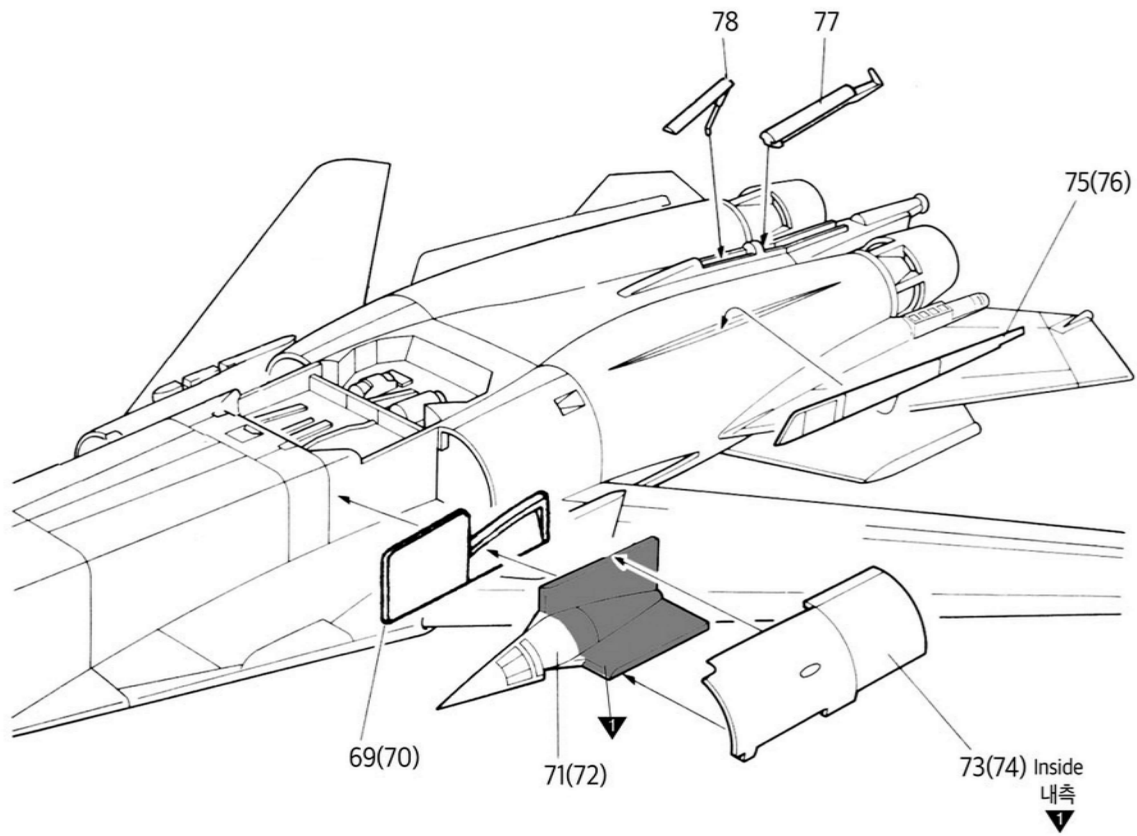


14



점착제 사용

\*( ) part shown is for opposite side.  
( )는 반대편 입니다.

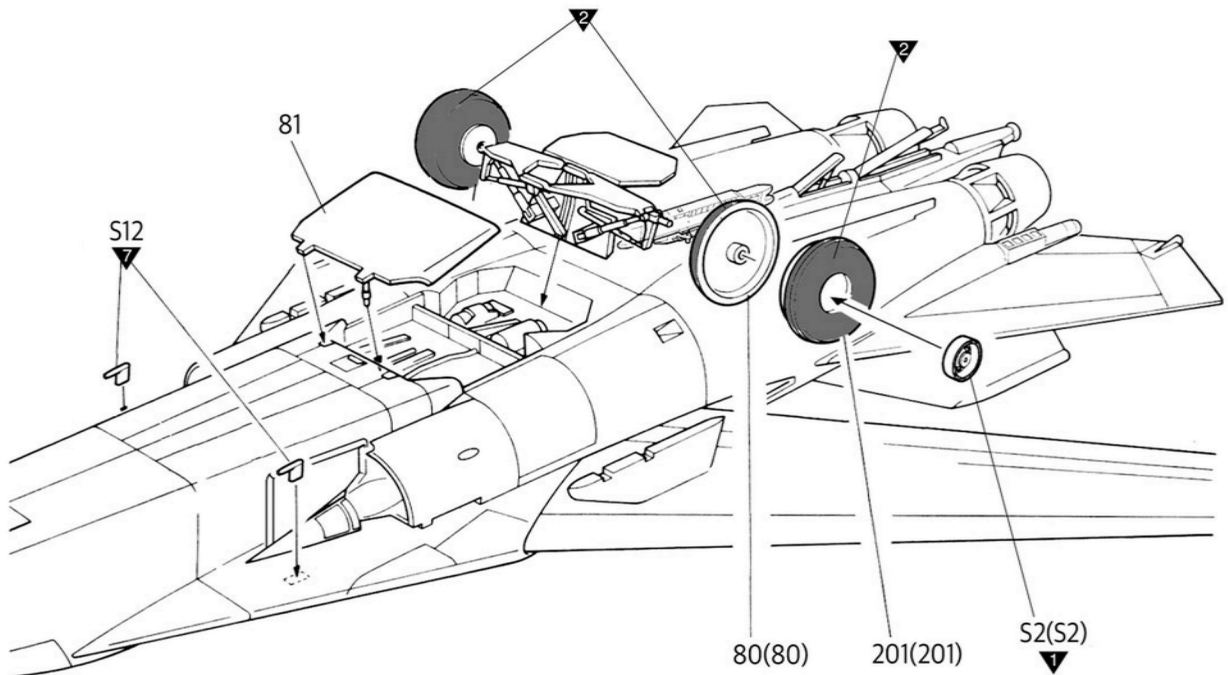


15



점착제 사용

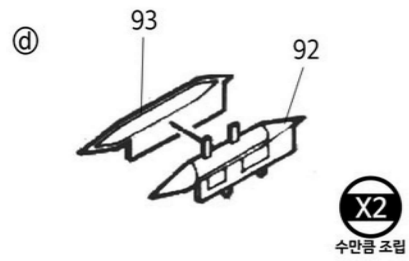
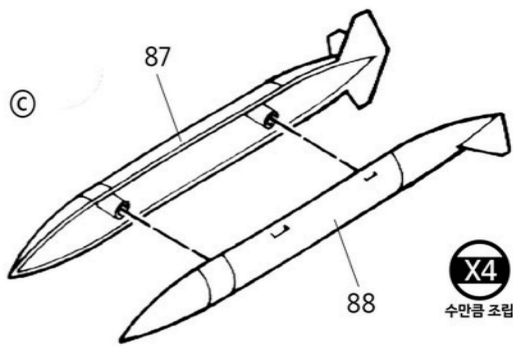
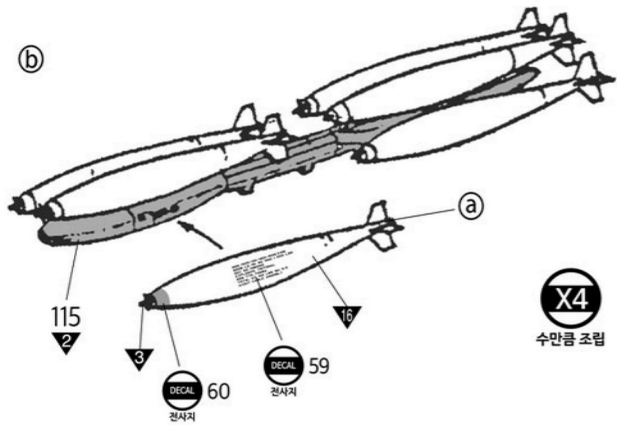
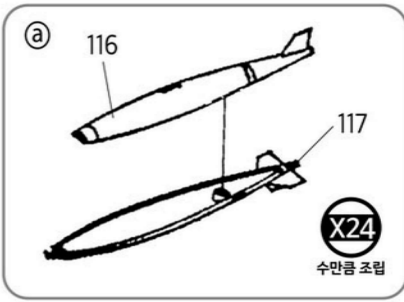
\*( ) part shown is for opposite side.  
( )는 반대편 입니다.



16

CEMENT

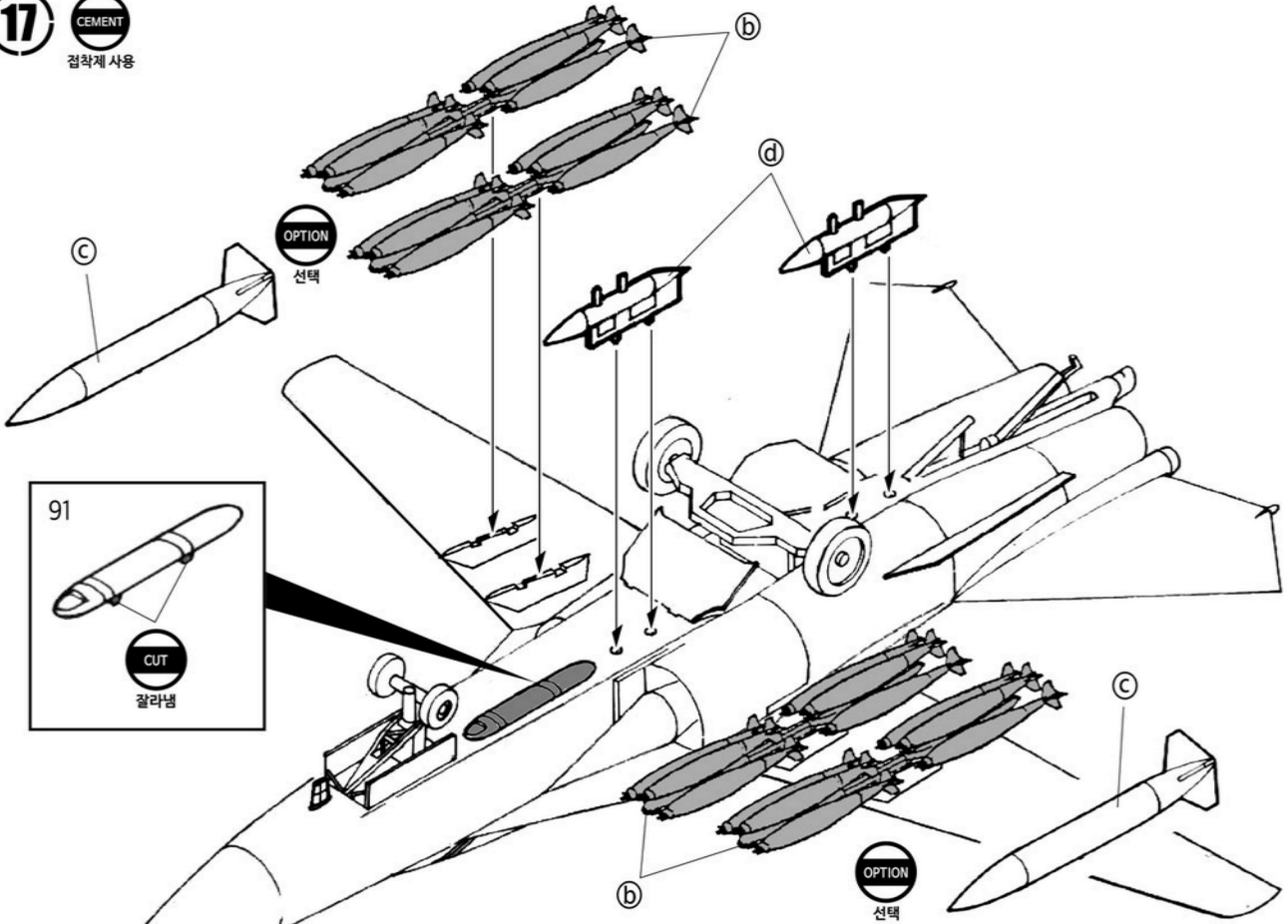
접착제 사용



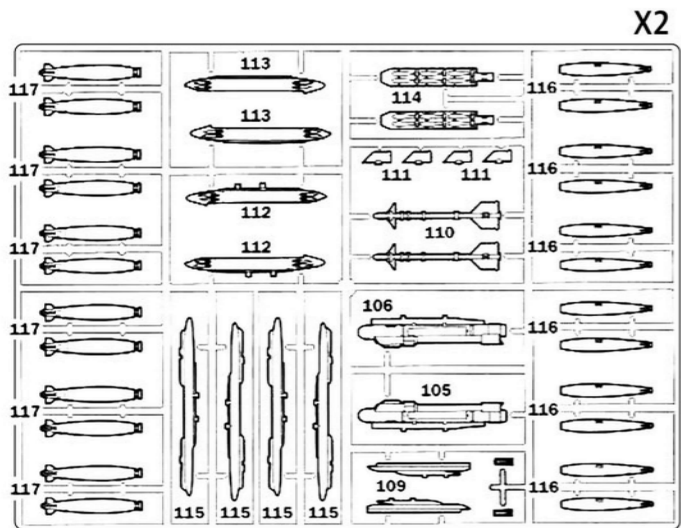
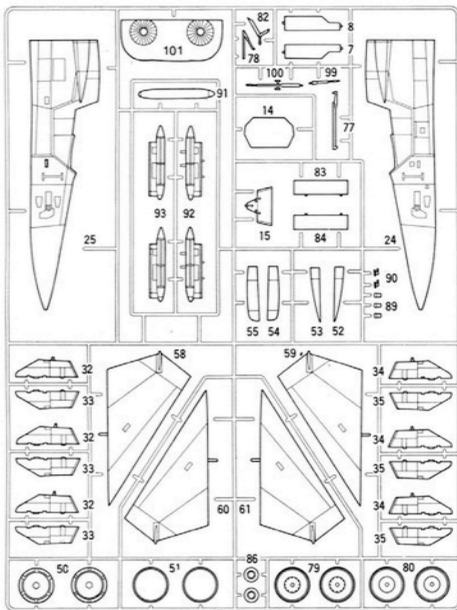
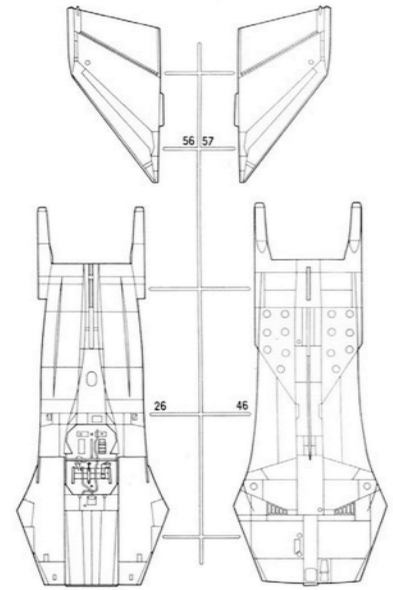
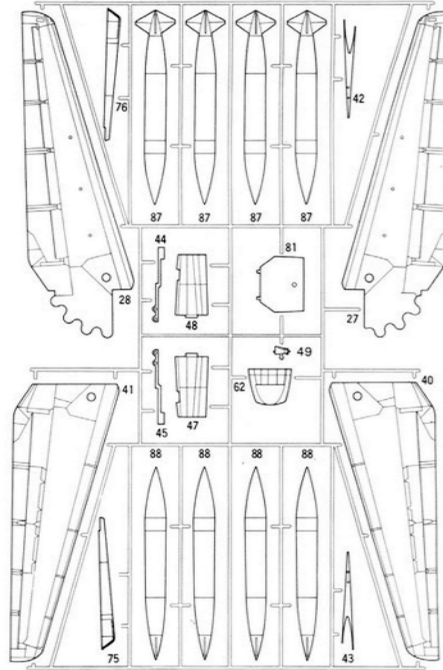
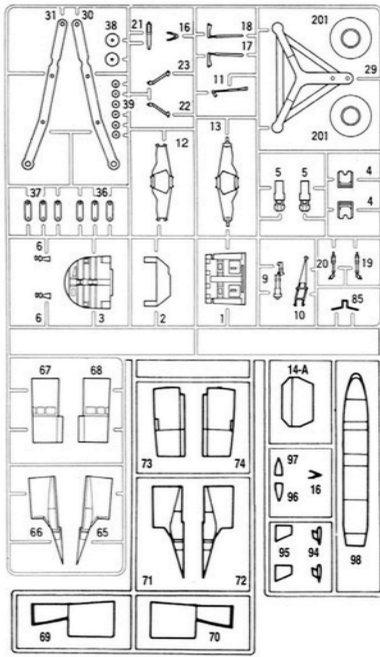
17

CEMENT

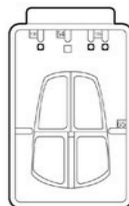
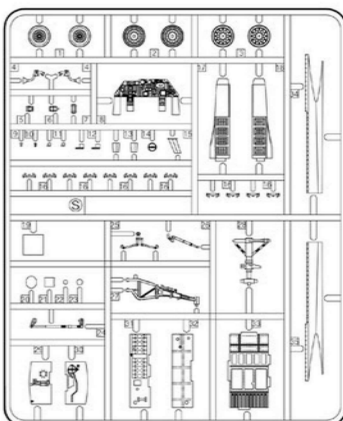
접착제 사용



parts location diagram/ 부품도



S



\*Decal/ 전사지  
\*Metal parts/ 메탈

Unused parts/ 불필요 부품

6, 7, 8, 9, 10, 11, 14-A, 34X2, 35X2, 36X1, 37X1, 54, 55, 65, 66, 67, 68, 79, 85, 86, 90, 94, 95, 76, 97, 98, 100, 105, 106, 107, 108, 110, 111, 112, 113, 114

S5, S6, S7, S8, S9, S10, S11, S13, S14, S16, S17, S18, S20, S21, S22, S23

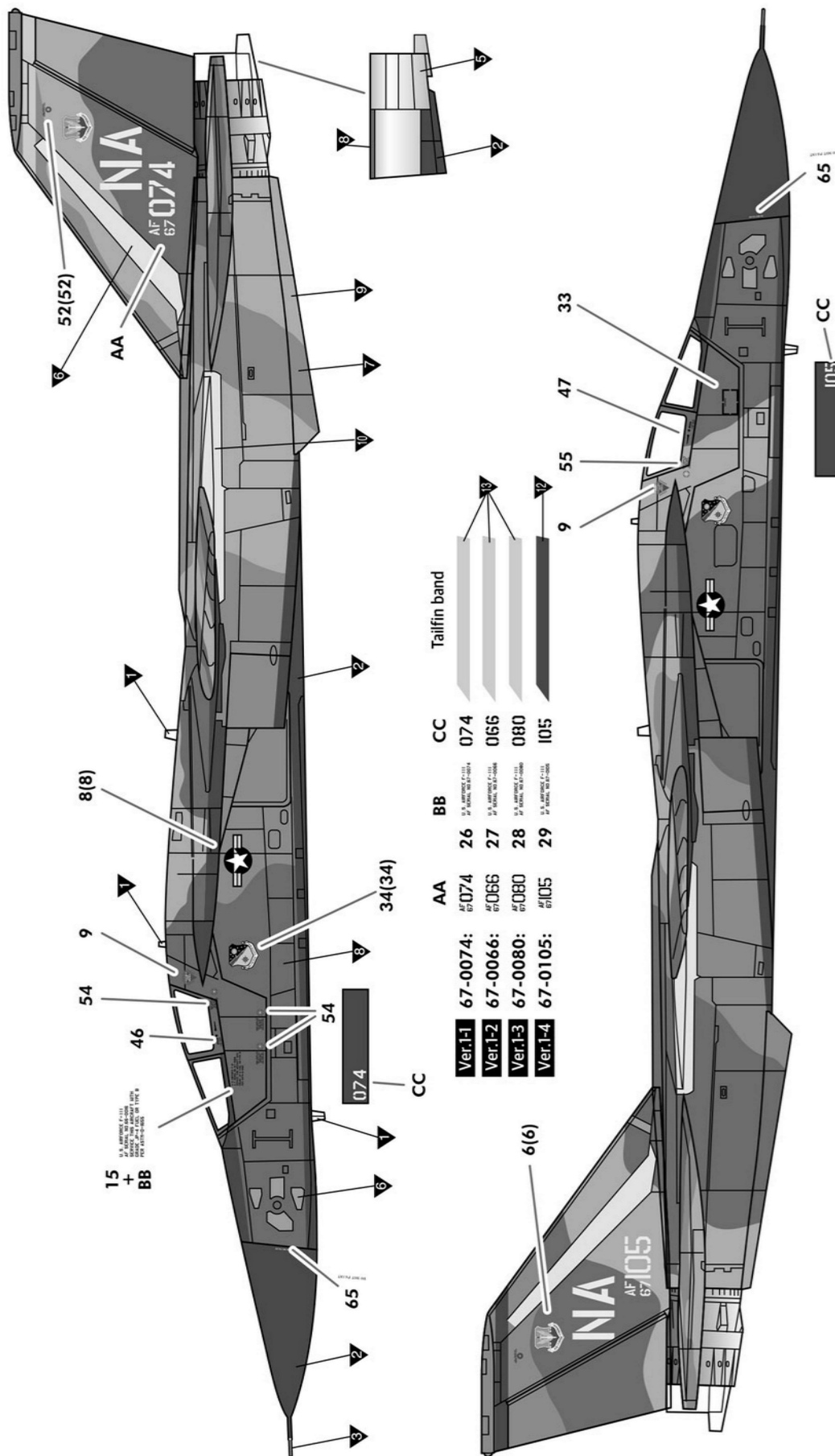
ACADEMY  
HOBBY MODEL KITS

ACADEMY  
ACADEMY PLASTIC MODEL CO., LTD.  
A/S 고객센터 대표 번호: 1588-2406

▶ painting & decal placement / 색칠 및 전사지표이기

\* ( ) part shown is for opposite side.  
( ) 는 반대편 입니다.

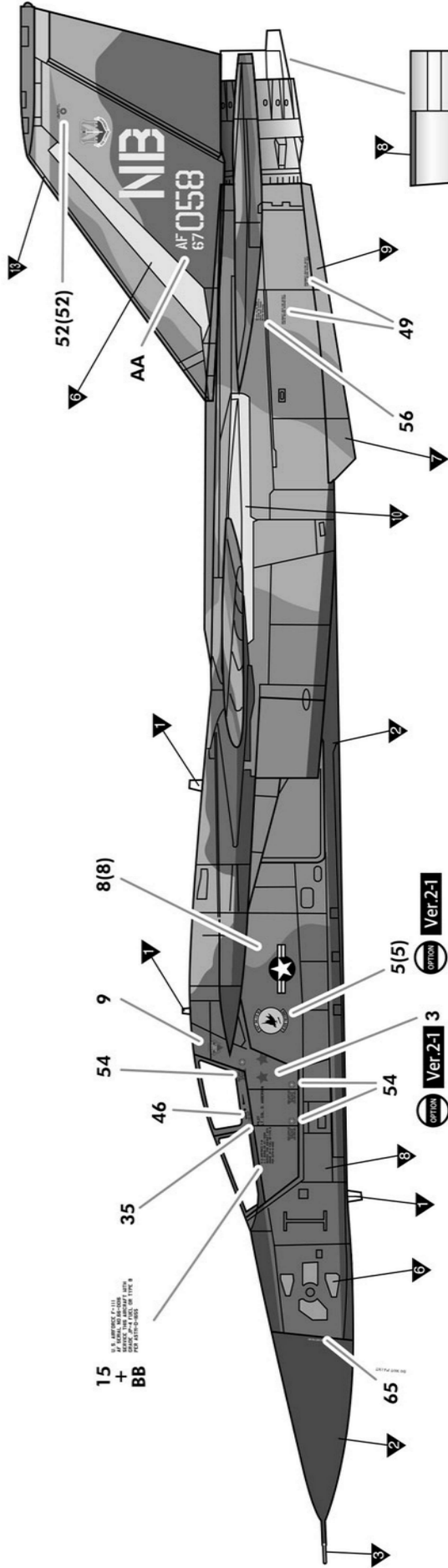
제474전술투비행단 소속기. 1972~3년 타이 타크리 기지. 제429/430전술투비행대는 콘스탄트 가드 V 및 라인배커 II 작전에 참가, 대공화염제압, 전자전기, 공중급유기 등의 지원을 받을 필요 없이 F-4 편대의 4배 이상의 폭격량을 활용한 전과를 올렸다. F-111s of 474th TFW, Takhli RTAFB, 1972~3. 429/430th TFS participated in operation Constant Guard V / Linebacker II, carrying ordnances more than 4 times of F-4 Phantom IIs, with no need of Wild Weasel, Electronic countermeasure and tankers.



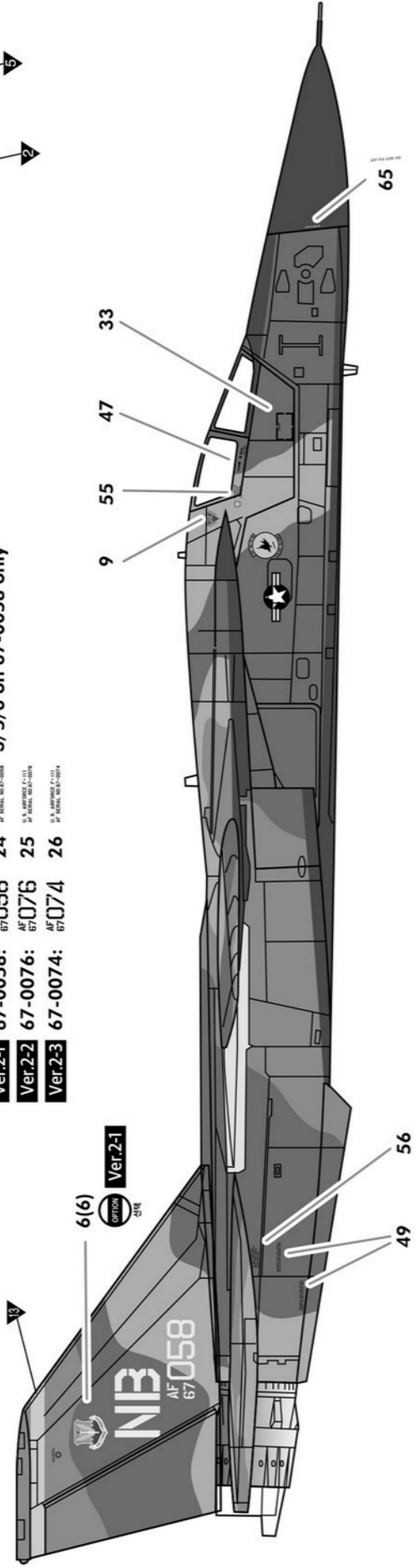


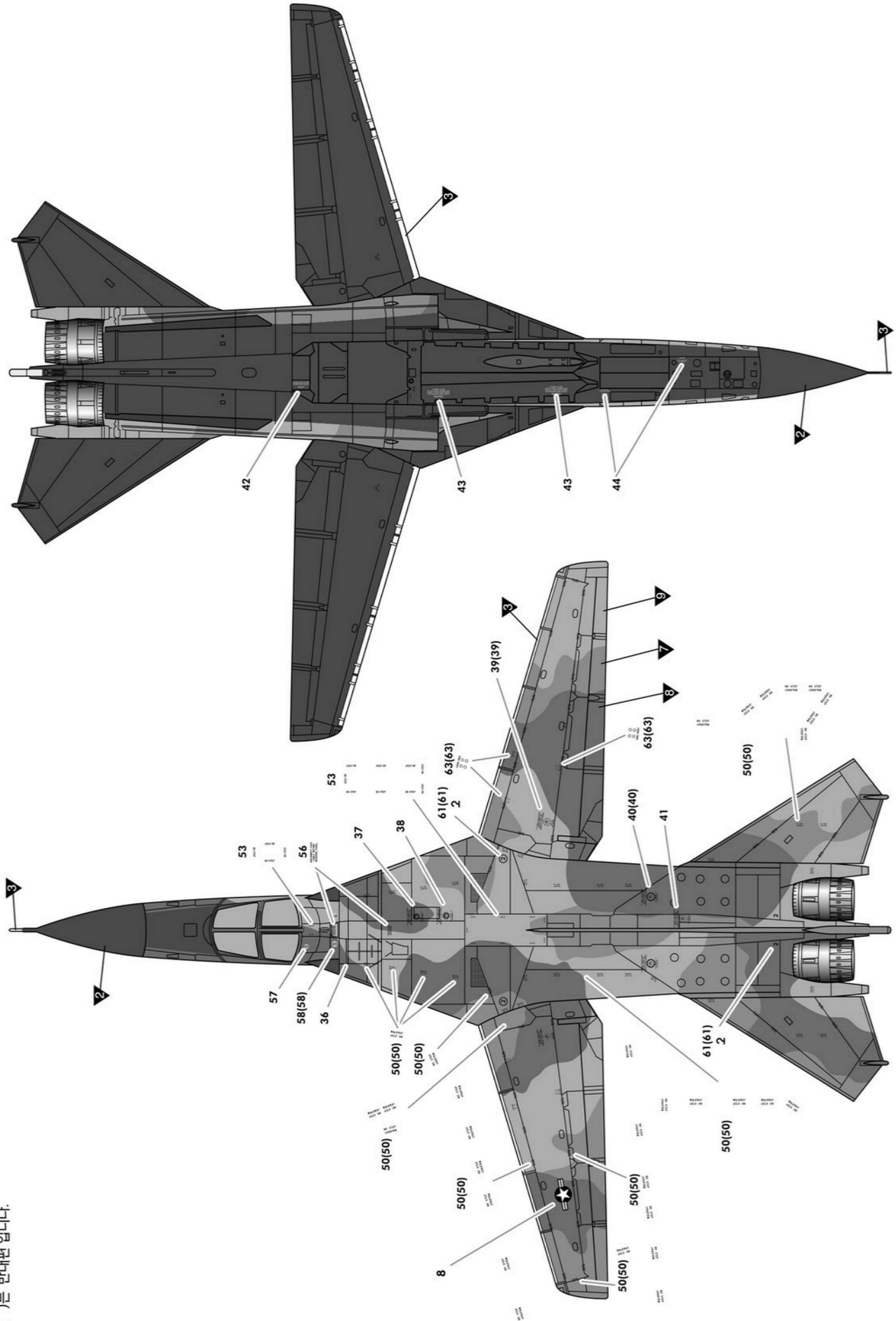
\* ( ) part shown is for opposite side.  
 ( ) 는 반대편입니다.

제474전술전투비행단 예하 제429전술전투비행대 소속기. 1971년 네바다주 벨리스 공군기지. 67-0058은 해당 부대 지휘관인 로버트 D. 중령의 탑승기로, 그가 1967년 월남에서 F-4C로 올린 미그 2기의 격추전과를 표시하는 붉은 별 2개가 그려져 있다.  
 F-111As of 429th TFS, 474th TFW, Nellis AB, Nevada, 1971. 67-0058 is a mount of CO, Lt. Col. Robert D. Anderson with two red stars from his 2 mig kills with F-4C, 1967 at Vietnam.



Ver-2-1	67-0058:	AA	BB	24	3/5/6 on 67-0058 only
Ver-2-2	67-0076:	AF 076	AF 076	25	
Ver-2-3	67-0074:	AF 074	AF 074	26	



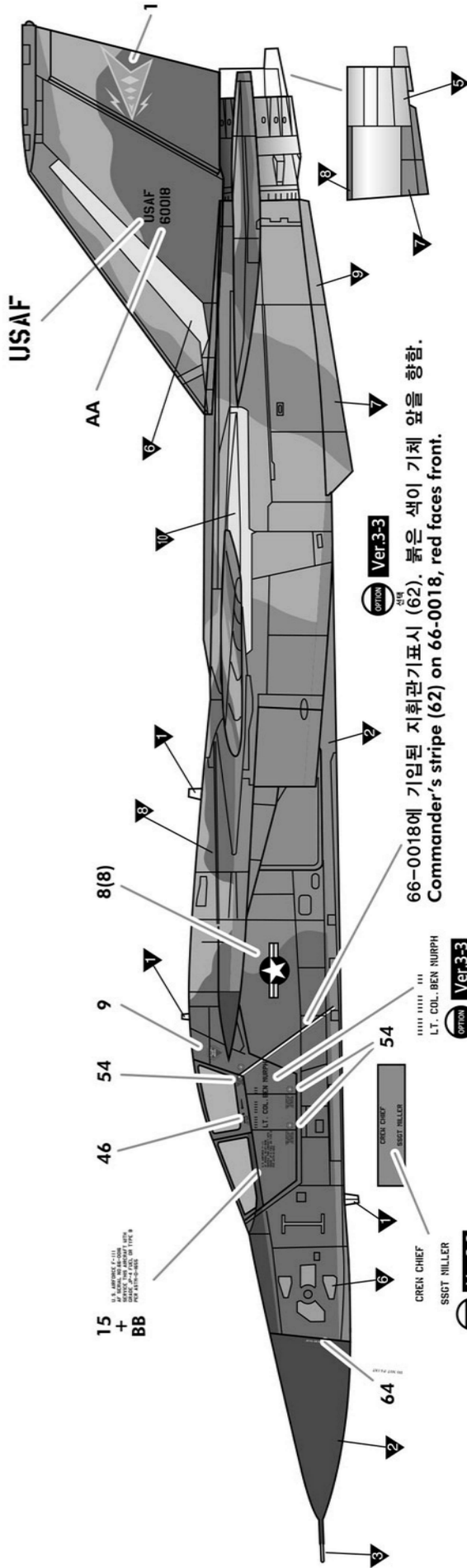


\* ( ) part shown is for opposite side.  
 ( )는 반대편 입니다.

\* ( ) part shown is for opposite side.  
( ) 는 반대편 입니다.

F-111의 실전운용 실험작전인 "콤벳 랜서"에 참가한 제474전술전투비행단 예하 제428전술전투비행단 예하 제428전술전투비행대 제1분견대 소속기. 1968년 타이  
F-111As of Det 1, 428th TFS, 474th TFW at operation Combat Lancer, Takhli RTAFB, 1968.

ver.3  
버전3



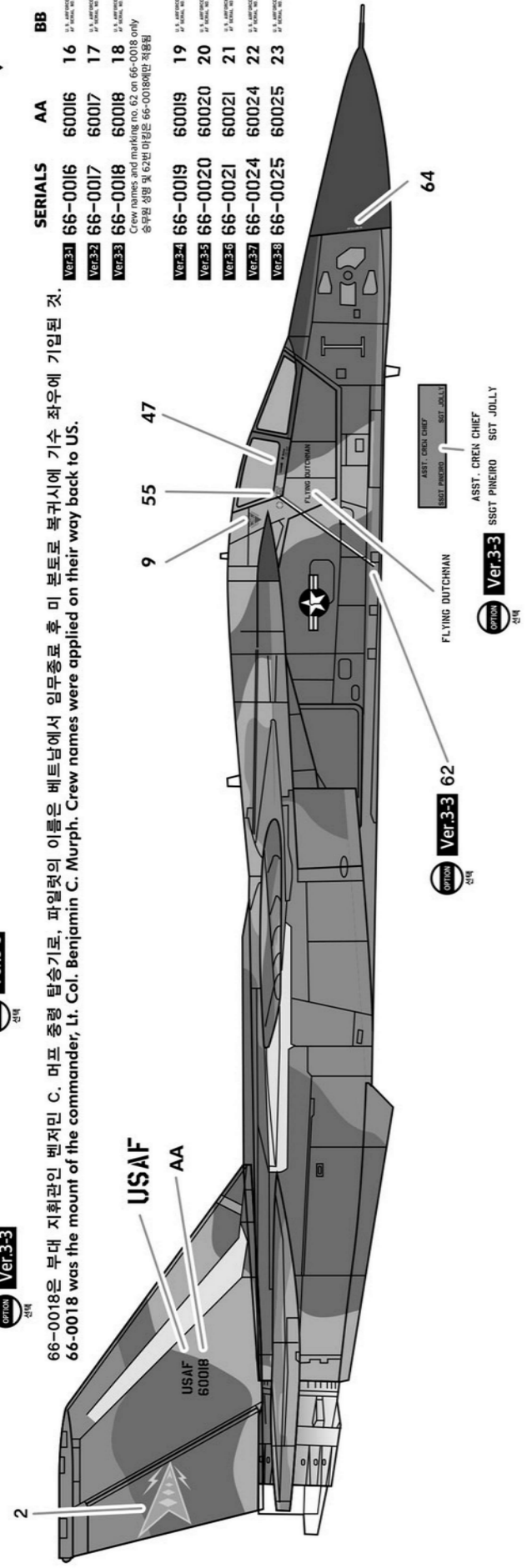
66-0018에 기입된 지휘관기표시 (62). 붉은 색이 기체 앞을 향함.  
Commander's stripe (62) on 66-0018, red faces front.

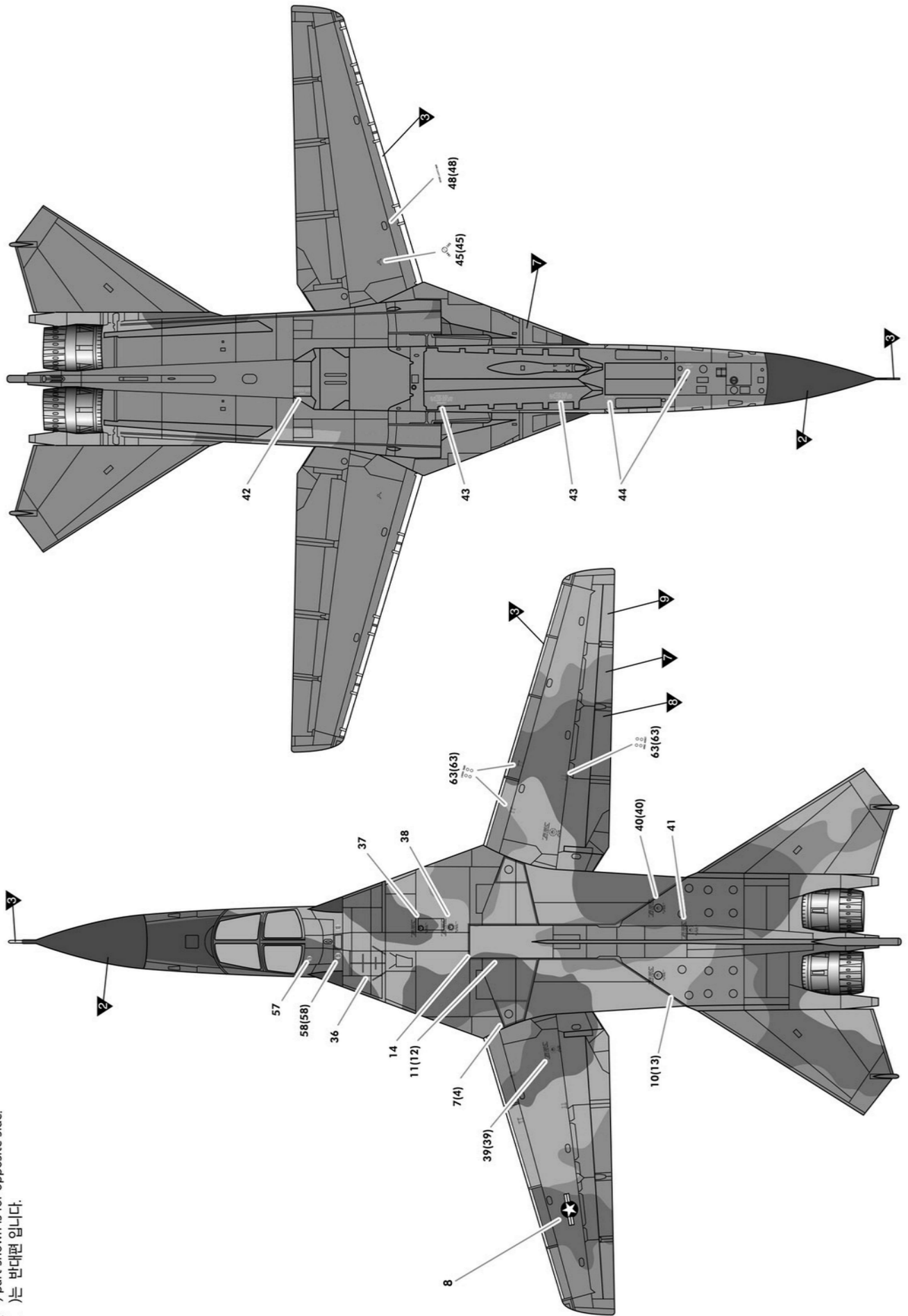
66-0018은 부대 지휘관인 벤저민 C. 머프 중령 탑승기로, 파일럿의 이름은 베트남에서 임무중로 후 미 본토로 복귀시에 기수 좌우에 기입된 것.  
66-0018 was the mount of the commander, Lt. Col. Benjamin C. Murph. Crew names were applied on their way back to US.

SERIALS	AA	BB
Ver.3-1	66-0016	60016
Ver.3-2	66-0017	60017
Ver.3-3	66-0018	60018

Crew names and marking no. 62 on 66-0018 only  
승무원 상징 및 62번 마킹은 66-0018에만 적용됨

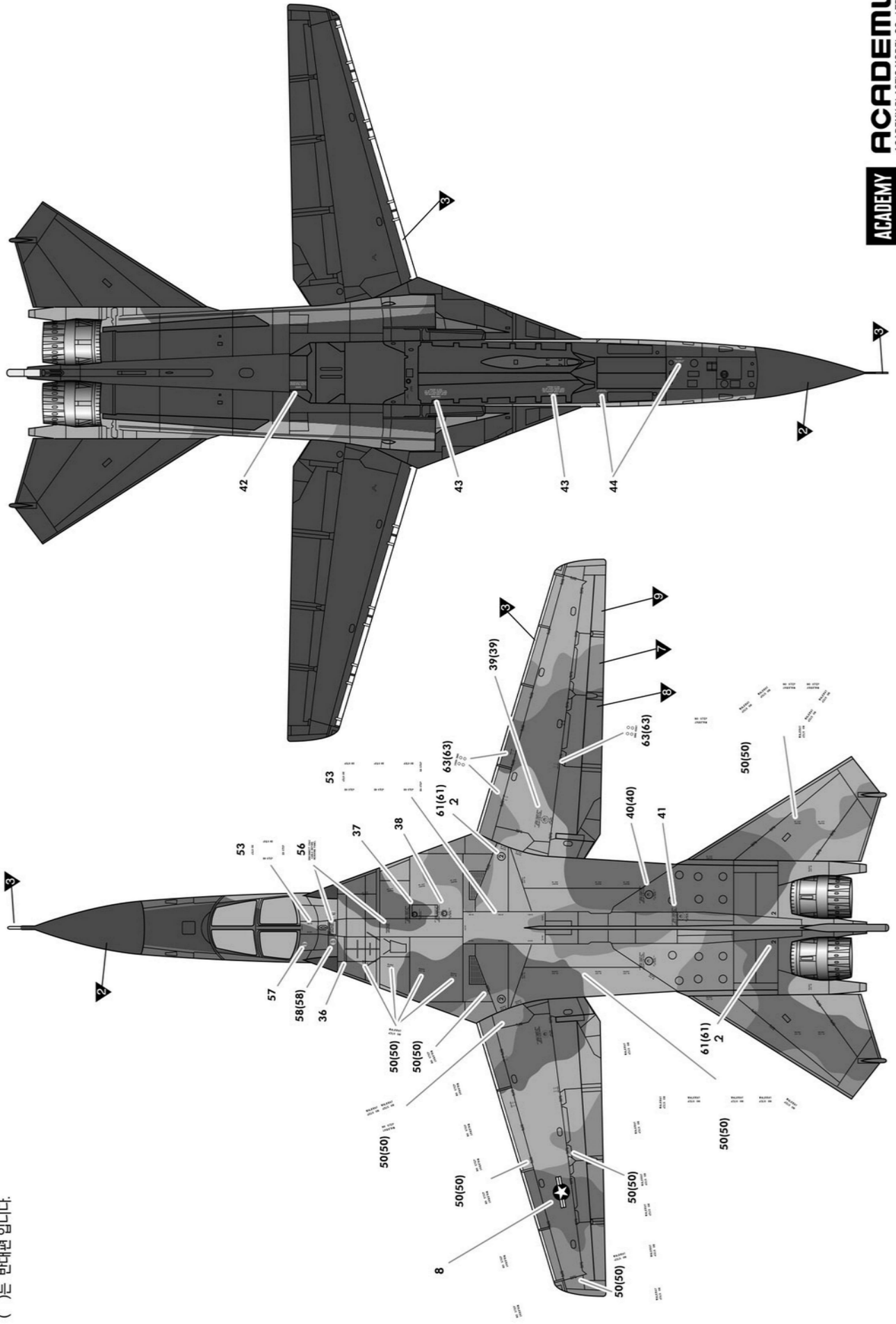
Ver.3-4	66-0019	60019
Ver.3-5	66-0020	60020
Ver.3-6	66-0021	60021
Ver.3-7	66-0024	60024
Ver.3-8	66-0025	60025





\* ( ) part shown is for opposite side.  
 ( ) 는 반대편 입니다.





\* ( ) part shown is for opposite side.  
 ( ) 는 반대편 입니다.

1/48th Scale

# USAF F-111A Aardvark<sup>®</sup> "Vietnam War"

LOCKED PAINT™

이종군 F-111A 이드바크 "비트남"

USAF F-111A Aardvark<sup>®</sup> "Vietnam War"

- 4종류의 미군 전투기 기종이 포함된 4종류의 미군 전투기 기종이 포함되어 있습니다.
- 4종류의 미군 전투기 기종이 포함되어 있습니다.
- 4종류의 미군 전투기 기종이 포함되어 있습니다.
- 4종류의 미군 전투기 기종이 포함되어 있습니다.

이종군 F-111A 이드바크 "비트남"에는 4종류의 미군 전투기 기종이 포함된 4종류의 미군 전투기 기종이 포함되어 있습니다.

F-111A (NA 2074) (1/48th Scale)

F-111A (NA 2075) (1/48th Scale)

F-111A (NA 2076) (1/48th Scale)

F-111A (NA 2077) (1/48th Scale)

USAF F-111A Aardvark<sup>®</sup> "Vietnam War"



USAF F-111A Aardvark<sup>®</sup> "Vietnam War"



PAINT INDEX

Part Name	Color Code	Color Name
Upper Fuselage	001	Dark Green
Lower Fuselage	002	Light Green
Wings	003	Dark Green
Engine	004	Black
Intake	005	Black
Flaps	006	Black
Wingtip	007	Black
Vertical Stabilizer	008	Black
Horizontal Stabilizer	009	Black
Canopy	010	Black
Seat	011	Black
Control Panel	012	Black
Instrument Panel	013	Black
Seatbelts	014	Black
Parachute	015	Black
Parachute Harness	016	Black
Parachute Canopy	017	Black
Parachute Straps	018	Black
Parachute Buckles	019	Black
Parachute Ropes	020	Black
Parachute Canopy Straps	021	Black
Parachute Canopy Buckles	022	Black
Parachute Canopy Ropes	023	Black
Parachute Canopy Straps	024	Black
Parachute Canopy Buckles	025	Black
Parachute Canopy Ropes	026	Black
Parachute Canopy Straps	027	Black
Parachute Canopy Buckles	028	Black
Parachute Canopy Ropes	029	Black
Parachute Canopy Straps	030	Black
Parachute Canopy Buckles	031	Black
Parachute Canopy Ropes	032	Black
Parachute Canopy Straps	033	Black
Parachute Canopy Buckles	034	Black
Parachute Canopy Ropes	035	Black
Parachute Canopy Straps	036	Black
Parachute Canopy Buckles	037	Black
Parachute Canopy Ropes	038	Black
Parachute Canopy Straps	039	Black
Parachute Canopy Buckles	040	Black
Parachute Canopy Ropes	041	Black
Parachute Canopy Straps	042	Black
Parachute Canopy Buckles	043	Black
Parachute Canopy Ropes	044	Black
Parachute Canopy Straps	045	Black
Parachute Canopy Buckles	046	Black
Parachute Canopy Ropes	047	Black
Parachute Canopy Straps	048	Black
Parachute Canopy Buckles	049	Black
Parachute Canopy Ropes	050	Black
Parachute Canopy Straps	051	Black
Parachute Canopy Buckles	052	Black
Parachute Canopy Ropes	053	Black
Parachute Canopy Straps	054	Black
Parachute Canopy Buckles	055	Black
Parachute Canopy Ropes	056	Black
Parachute Canopy Straps	057	Black
Parachute Canopy Buckles	058	Black
Parachute Canopy Ropes	059	Black
Parachute Canopy Straps	060	Black
Parachute Canopy Buckles	061	Black
Parachute Canopy Ropes	062	Black
Parachute Canopy Straps	063	Black
Parachute Canopy Buckles	064	Black
Parachute Canopy Ropes	065	Black
Parachute Canopy Straps	066	Black
Parachute Canopy Buckles	067	Black
Parachute Canopy Ropes	068	Black
Parachute Canopy Straps	069	Black
Parachute Canopy Buckles	070	Black
Parachute Canopy Ropes	071	Black
Parachute Canopy Straps	072	Black
Parachute Canopy Buckles	073	Black
Parachute Canopy Ropes	074	Black
Parachute Canopy Straps	075	Black
Parachute Canopy Buckles	076	Black
Parachute Canopy Ropes	077	Black
Parachute Canopy Straps	078	Black
Parachute Canopy Buckles	079	Black
Parachute Canopy Ropes	080	Black
Parachute Canopy Straps	081	Black
Parachute Canopy Buckles	082	Black
Parachute Canopy Ropes	083	Black
Parachute Canopy Straps	084	Black
Parachute Canopy Buckles	085	Black
Parachute Canopy Ropes	086	Black
Parachute Canopy Straps	087	Black
Parachute Canopy Buckles	088	Black
Parachute Canopy Ropes	089	Black
Parachute Canopy Straps	090	Black
Parachute Canopy Buckles	091	Black
Parachute Canopy Ropes	092	Black
Parachute Canopy Straps	093	Black
Parachute Canopy Buckles	094	Black
Parachute Canopy Ropes	095	Black
Parachute Canopy Straps	096	Black
Parachute Canopy Buckles	097	Black
Parachute Canopy Ropes	098	Black
Parachute Canopy Straps	099	Black
Parachute Canopy Buckles	100	Black