









1. Insert the battery into the battery compartment. The positive (+) and negative (-) terminals must be correctly aligned.

2. Turn the power switch to the "ON" position. The device will be powered on.

3. The device will be powered on. The device will be powered on.

1. Turn the power switch to the "ON" position.

2. Turn the power switch to the "ON" position.

3. Turn the power switch to the "ON" position.

4. Turn the power switch to the "ON" position.

5. Turn the power switch to the "ON" position.

6. Turn the power switch to the "ON" position.

7. Turn the power switch to the "ON" position.

8. Turn the power switch to the "ON" position.

9. Turn the power switch to the "ON" position.

10. Turn the power switch to the "ON" position.

11. Turn the power switch to the "ON" position.

12. Turn the power switch to the "ON" position.

13. Turn the power switch to the "ON" position.

14. Turn the power switch to the "ON" position.

15. Turn the power switch to the "ON" position.

16. Turn the power switch to the "ON" position.

17. Turn the power switch to the "ON" position.

18. Turn the power switch to the "ON" position.

19. Turn the power switch to the "ON" position.

20. Turn the power switch to the "ON" position.

21. Turn the power switch to the "ON" position.

22. Turn the power switch to the "ON" position.



5   



6 



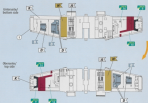
7 



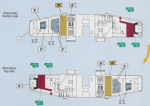
8   



9



10



11    



12    



13    



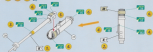
14    



15    



16 



17 

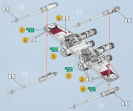


18 

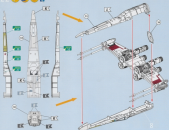


19 





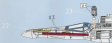
22    



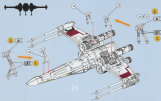
23   



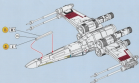
24  



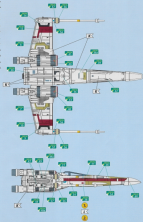
25   



26   



-  A
-  B
-  C
-  D
-  E
-  F



-  A
-  B
-  C
-  D
-  E

