

7TP Polski Czołg Dwuwieżowy (wczesnej produkcji) *7TP Polish Tank Twin Turret (early production)*



Cat. No. 35071
Scale 1/35



3d design: Przemysław Głogowski
Research: IBG Crew

IBG Models pragnie podziękować Panu Jędrzejowi Korbalowi za pomoc w stworzeniu tego modelu!

IBG Models would like to thank Mr. Jędrzej Korbal for his help in creating this model kit!

1 Element złożony we wcześniejszym etapie
Element assembled in previous step

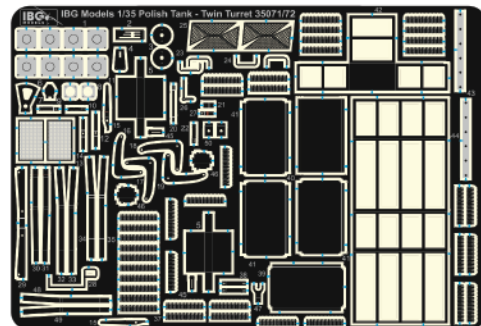
1 Element po złożeniu w aktualnym etapie
Element after assembly in current step

? Wersja do wyboru
Version to choose

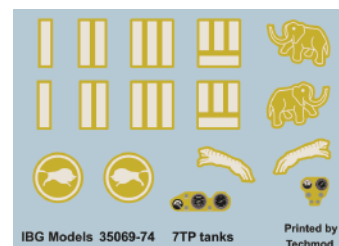
A Kolor farby
Paint colour

1 Kalkomania
Decal

Elementy Fototrawione / *Photo-etched Parts*



Kalkomanie / *Decals*



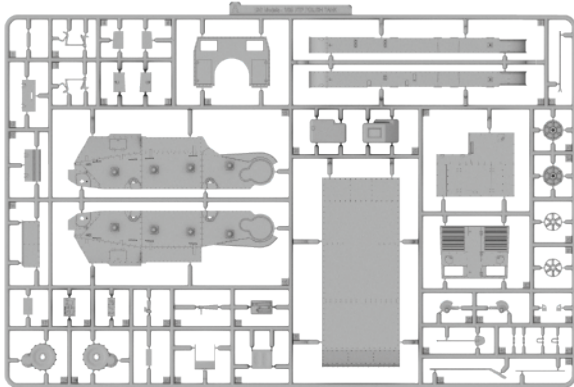
Przed montażem przeczytać instrukcję. Przestrzegać kolejności montażu podanego w instrukcji. Klej i farby nie wchodzi w skład zestawu.
Please read instructions before assembly. Follow the sequence of assembly presented in instructions. Glue and paint not included.

IBG Models
ul. Benedykta Hertza 2
04-603 Warszawa
Poland

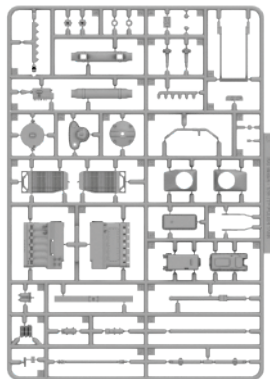
tel +48 22 8159150
fax +48 22 8159151
ibgsc@ibg.com.pl
www.ibg.com.pl
www.ibgmodels.com

Elementy modelu
Elements of the model kit

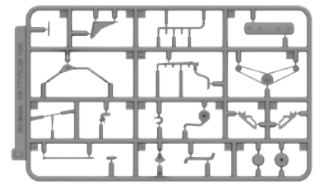
Ramka A / Frame A



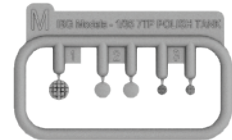
Ramka B / Frame B



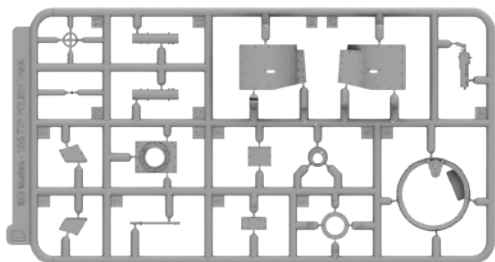
Ramka C / Frame C



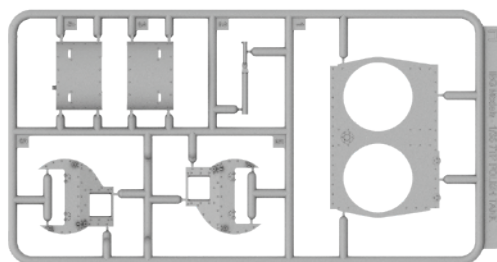
**Ramka M (przezroczysta) /
Frame M (transparent)**



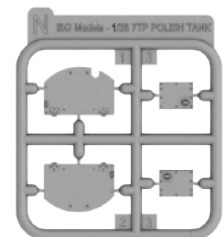
Ramka D x2 / Frame D x2



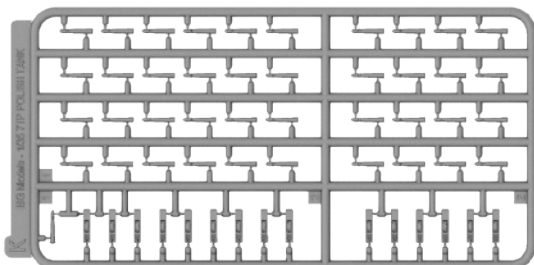
Ramka H / Frame H



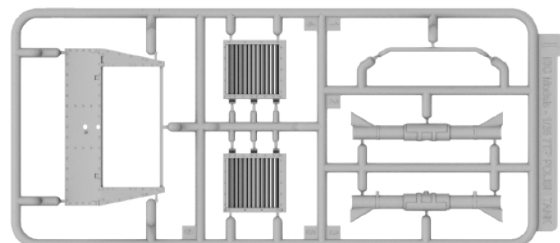
Ramka N / Frame N



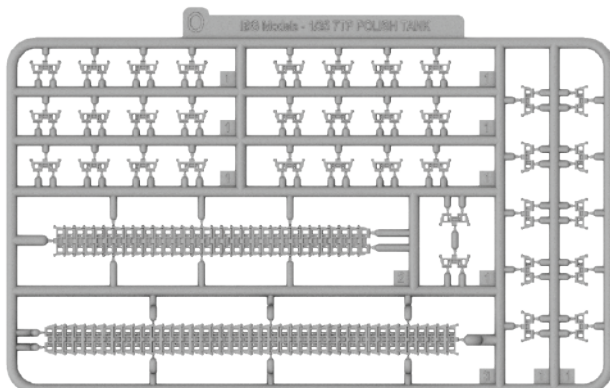
Ramka K x2 / Frame K x2



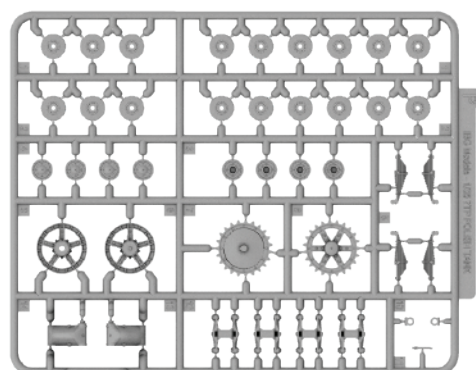
Ramka I / Frame I



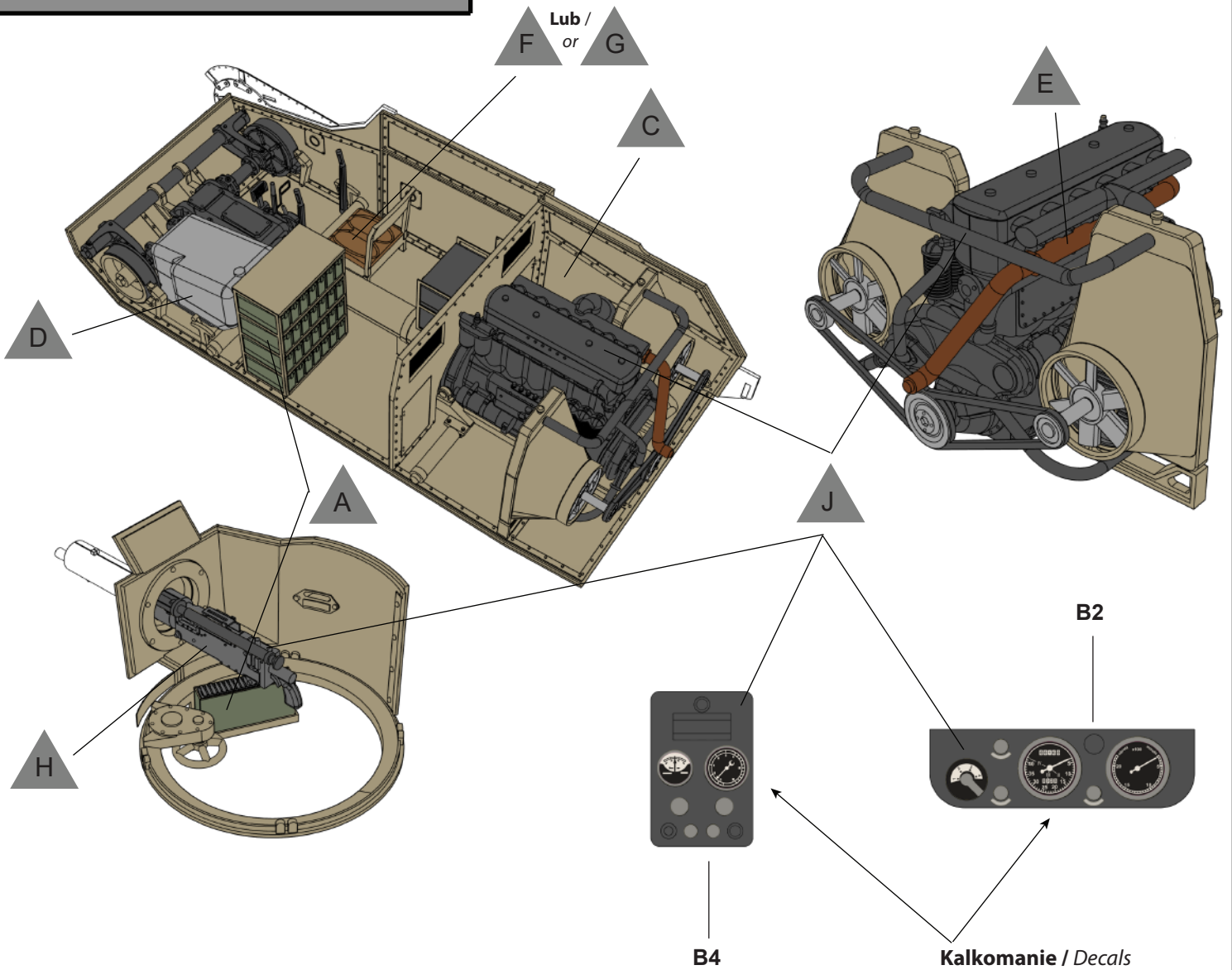
Ramka O x2 / Frame O x2



Ramka P x2 / Frame P x2

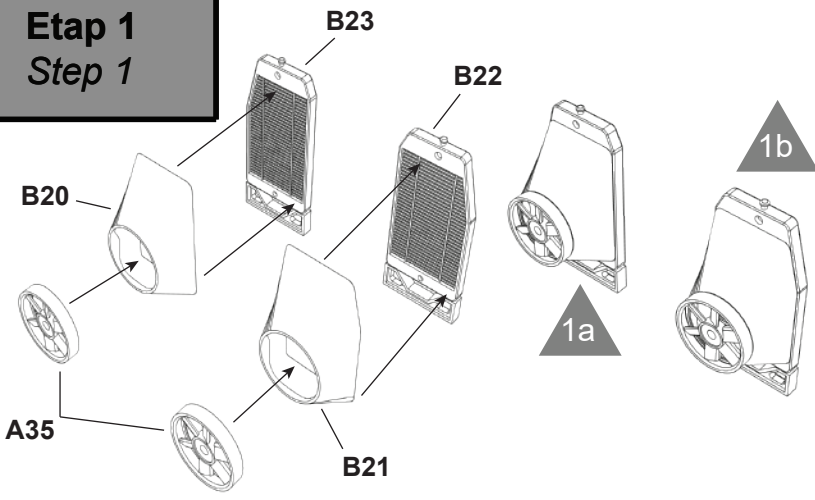


Malowanie wnętrza modelu
Painting the models interior

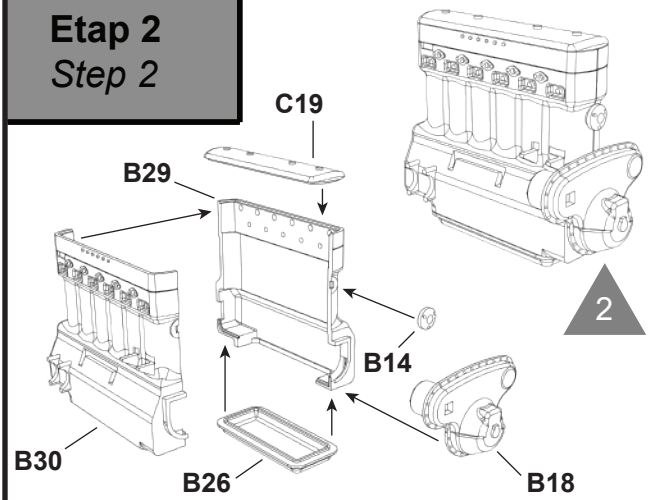


	VALLEJO	HATAKA	LIFE COLOR	MR HOBBY	AK INTERACTIVE	MISSION MODELS
Polish Olive Green	A 70.857	HTK-_088	TM001	H420	AK031	MMP-030
Polish Dark Brown	B 70.846	HTK-_087	TM002	H406	AK718	MMP-115
Polish Sand	C 70.916	HTK-_086	TM003	H459	AK725	MMP-016
Silver	D 71.067	HTK-_003	LC24	H8	AK479	MMP-006
Rust	E 71.130	HTK-_132	LC32	H47	AK708	MMW-001
Brown Leather	F 72.740	HTK-_186	UA764	H460	AK3031	MMP-002
Black Leather	G 71.251	HTK-_041	UA763	H12	AK3034	MMP-040
Gunmetal	H 71.072	HTK-_106	LC26	H018	AK798	MMM-010
Black	J 71.057	HTK-_100	LC02	H12	RC001	MMP-047
Grey	K 71.046	HTK-_083	UA113	H417	AK4052	MMP-116
Wood	L 71.077	HTK-_172	UA714	H37	AK780	MMP-142

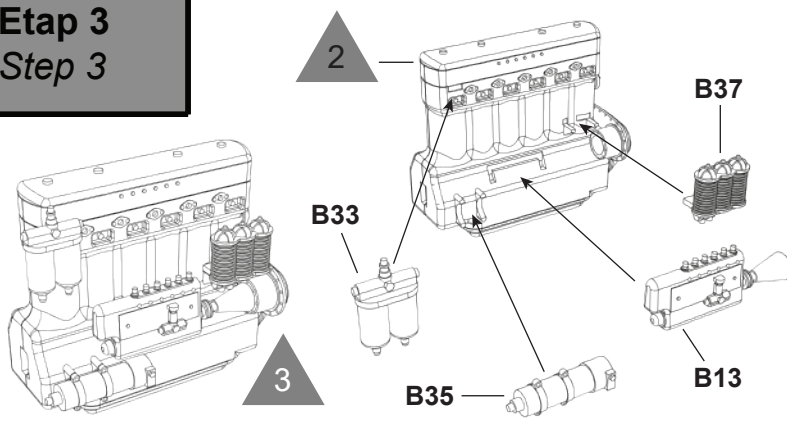
Etap 1
Step 1



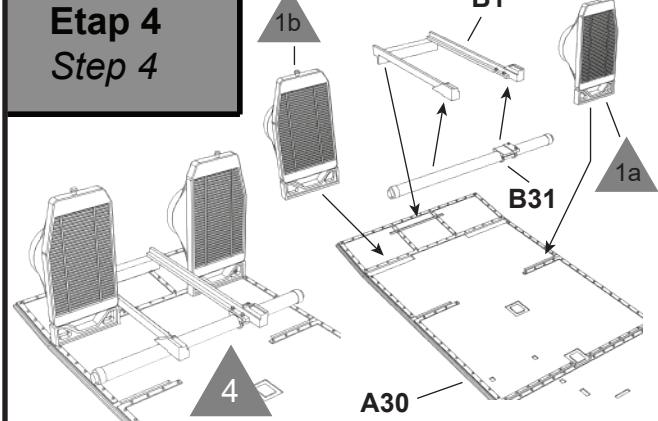
Etap 2
Step 2



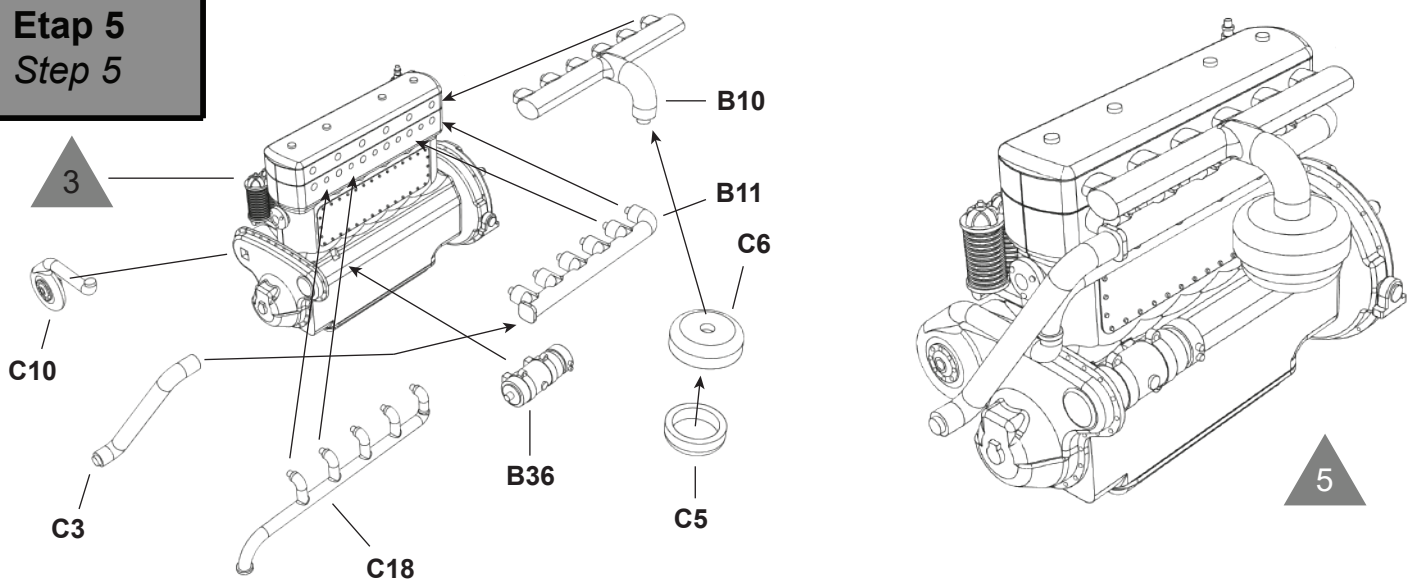
Etap 3
Step 3



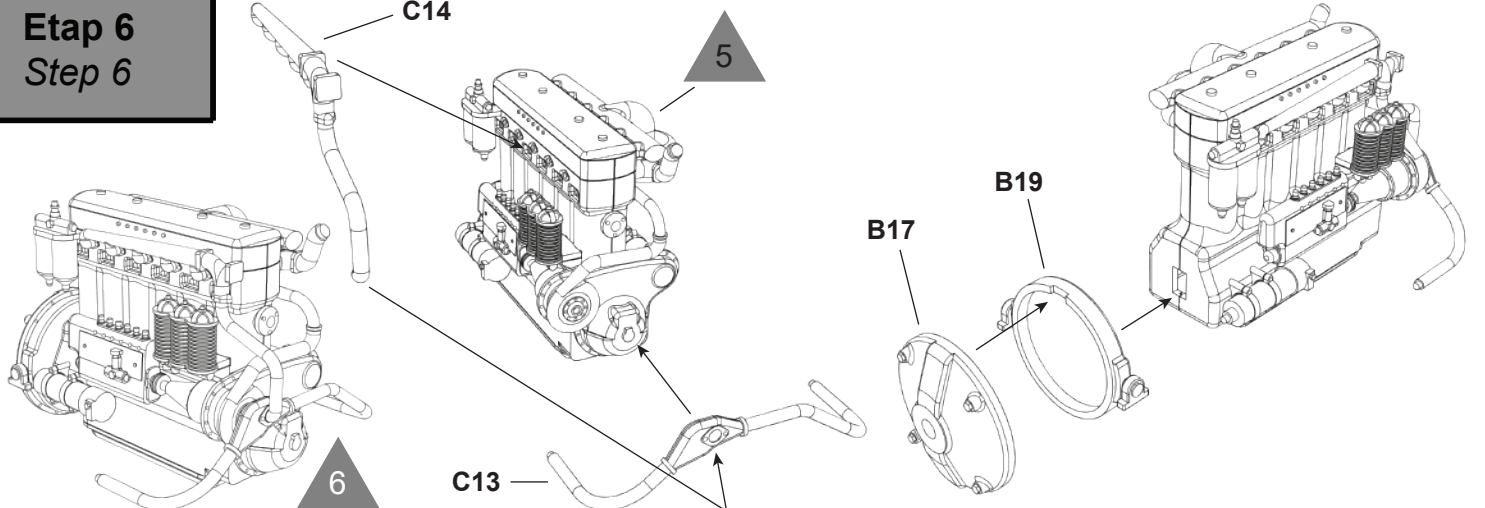
Etap 4
Step 4



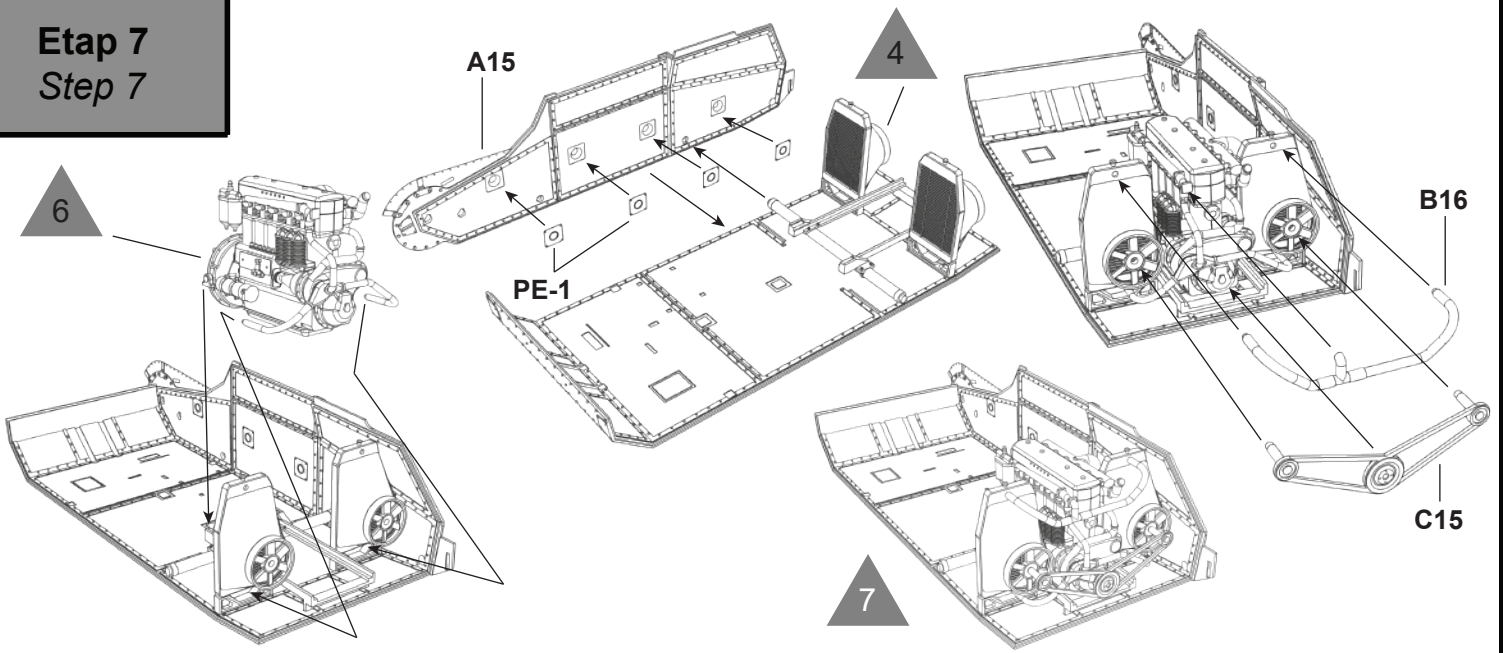
Etap 5
Step 5



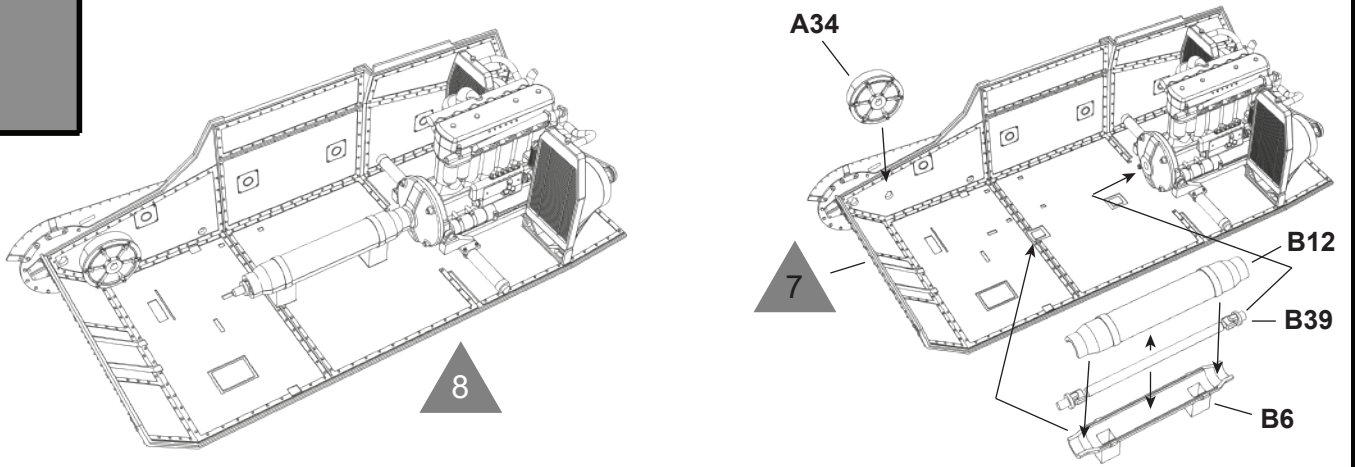
Etap 6
Step 6



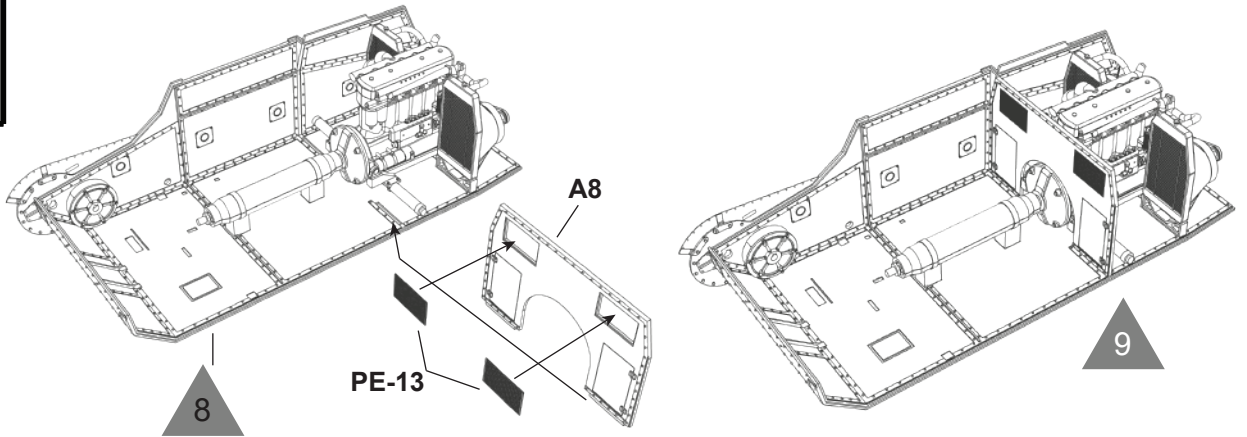
Etap 7
Step 7



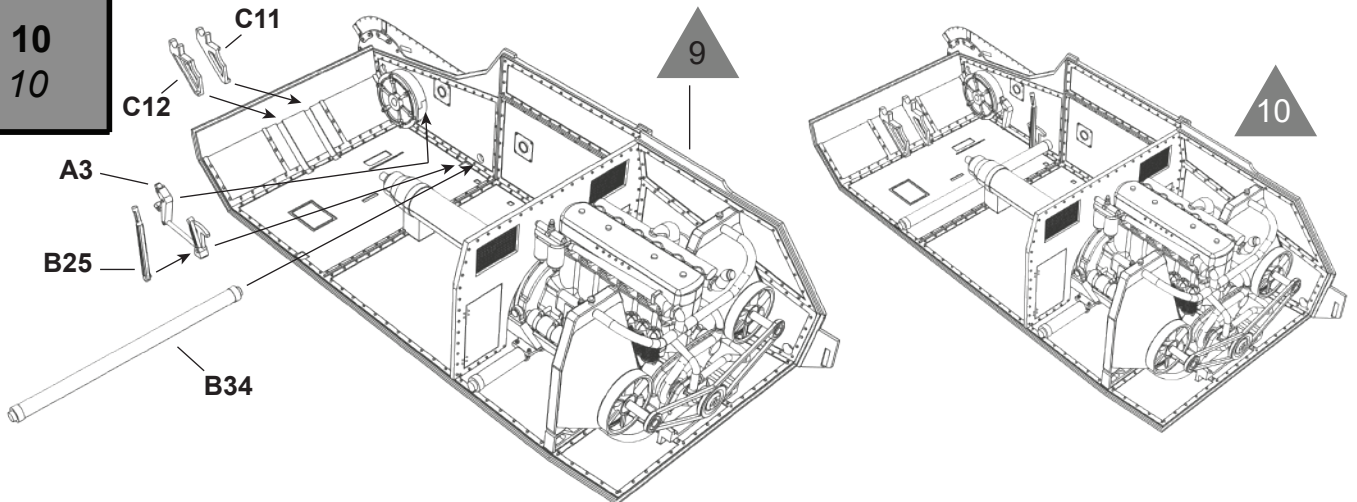
Etap 8
Step 8



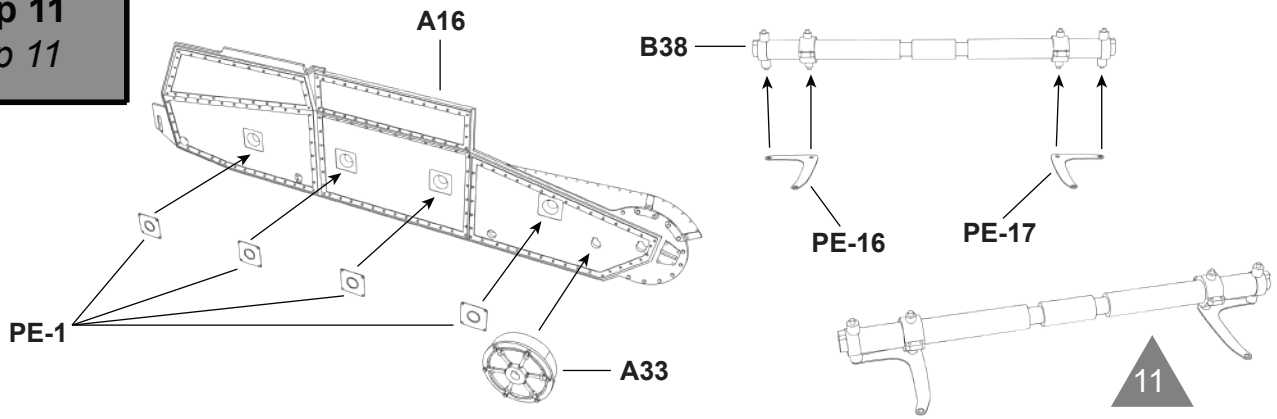
Etap 9
Step 9



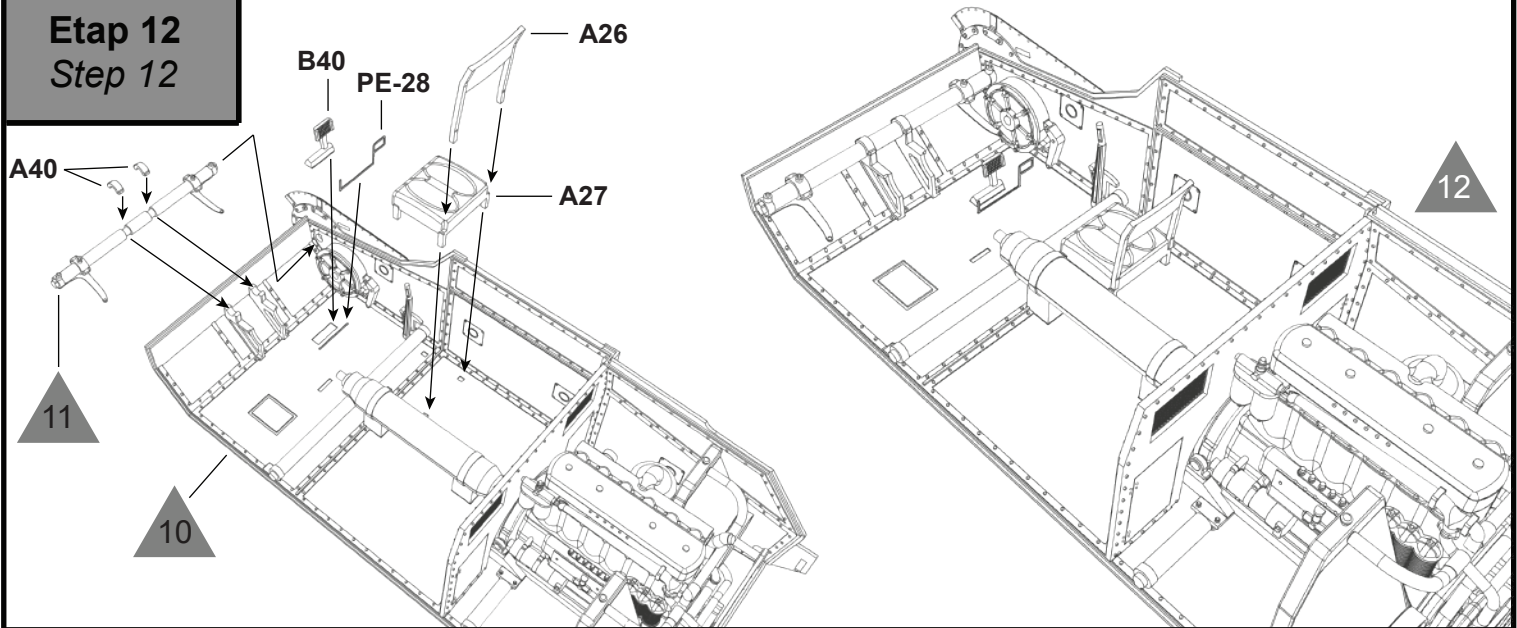
Etap 10
Step 10



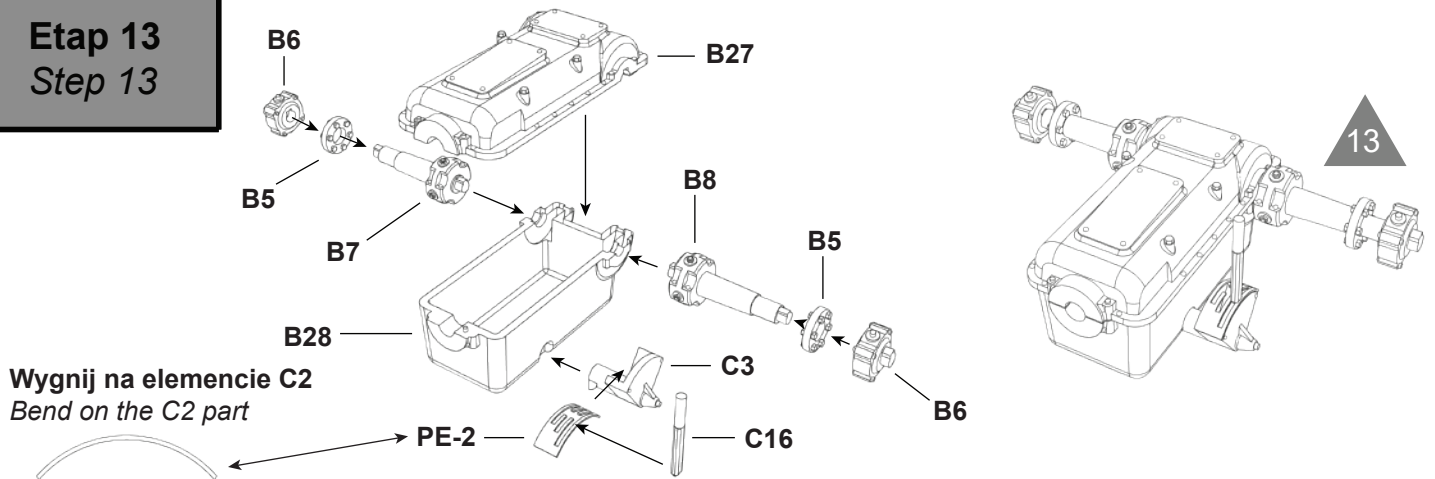
Etap 11
Step 11



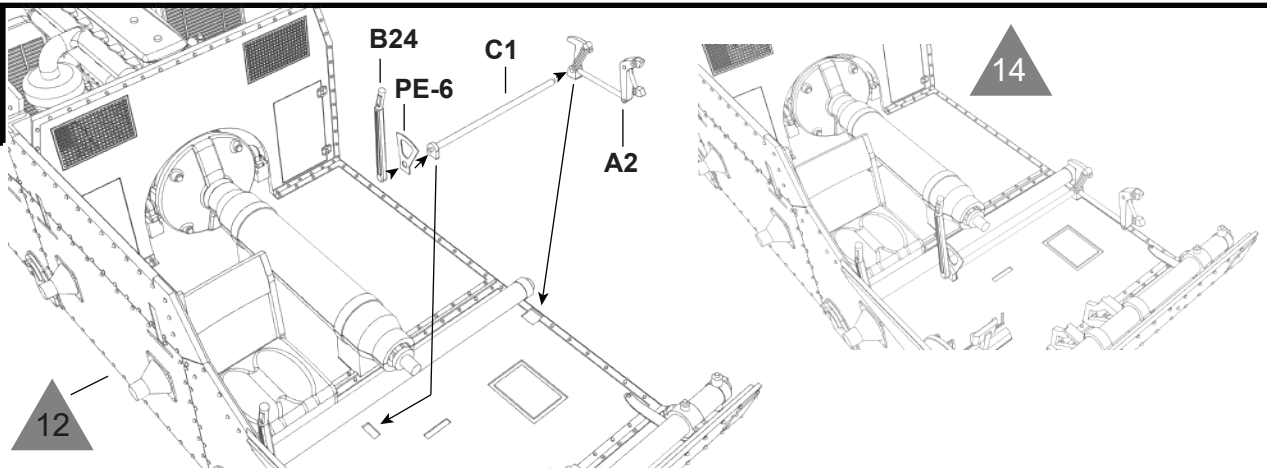
Etap 12
Step 12



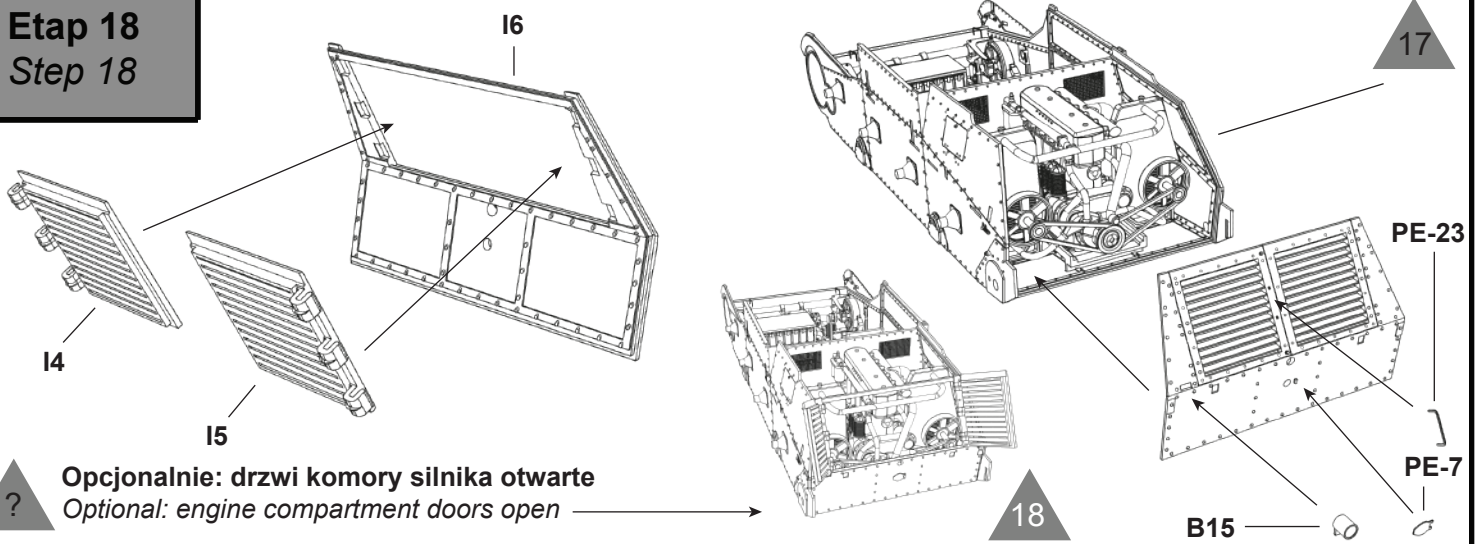
Etap 13
Step 13



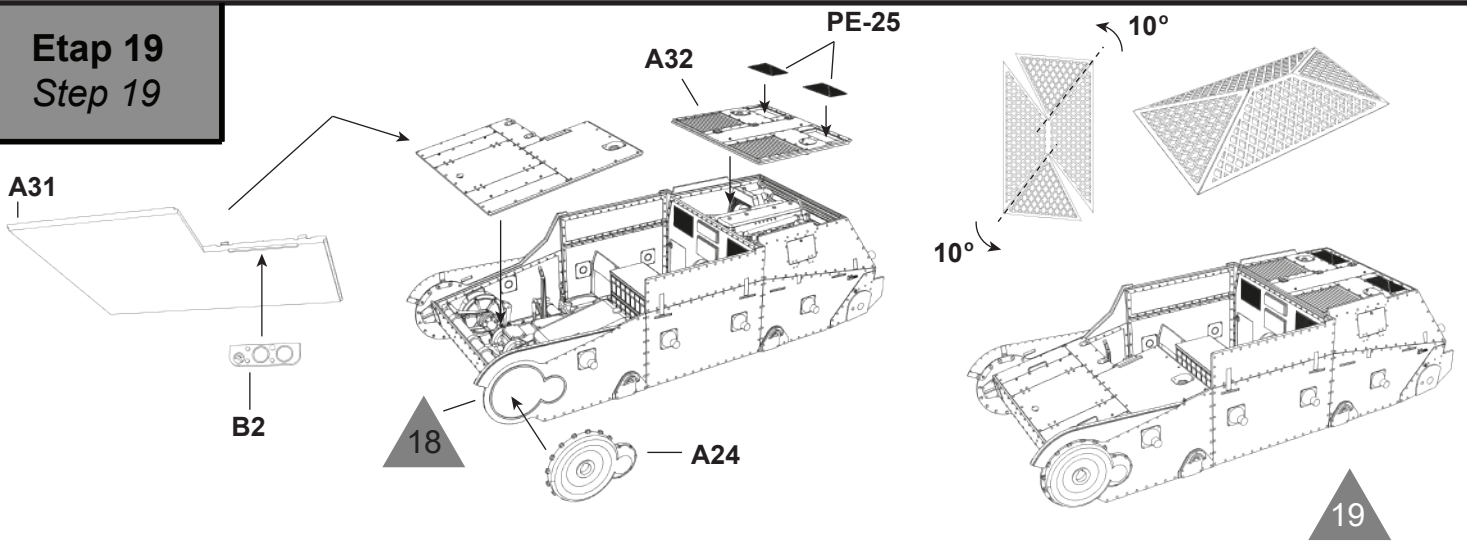
Etap 14
Step 14



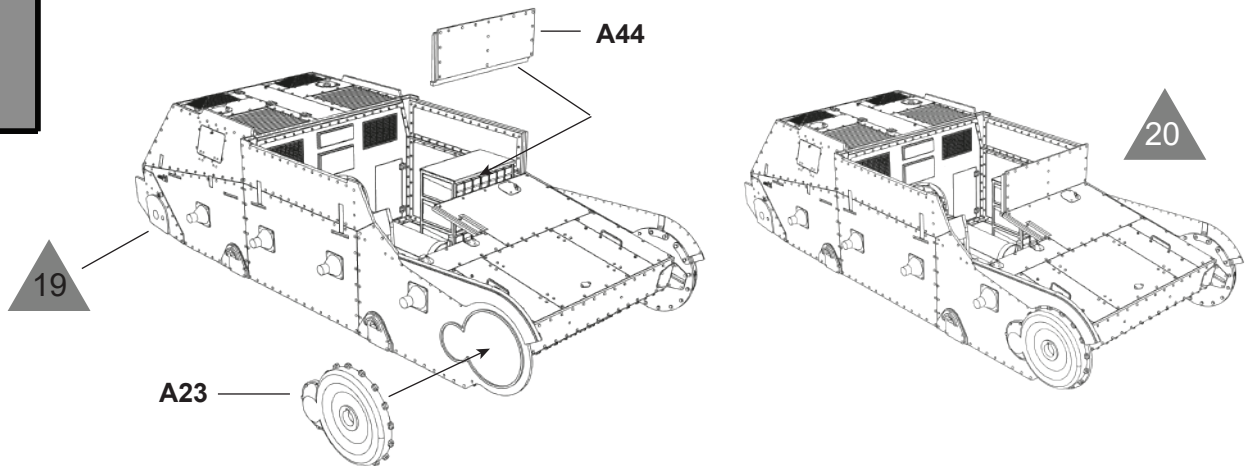
Etap 18
Step 18



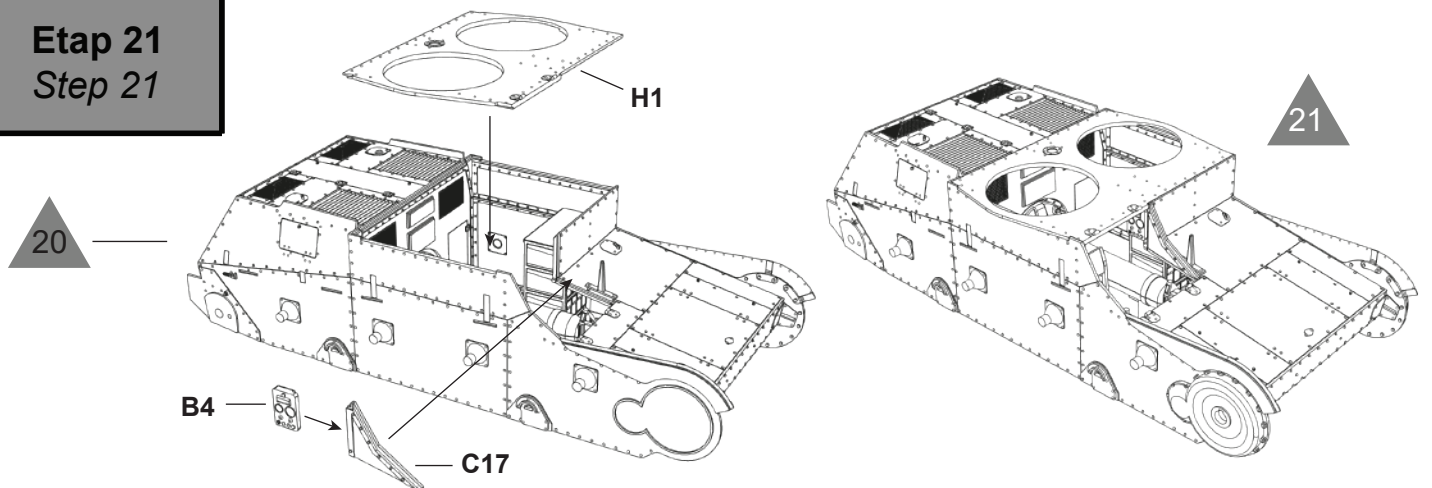
Etap 19
Step 19



Etap 20
Step 20



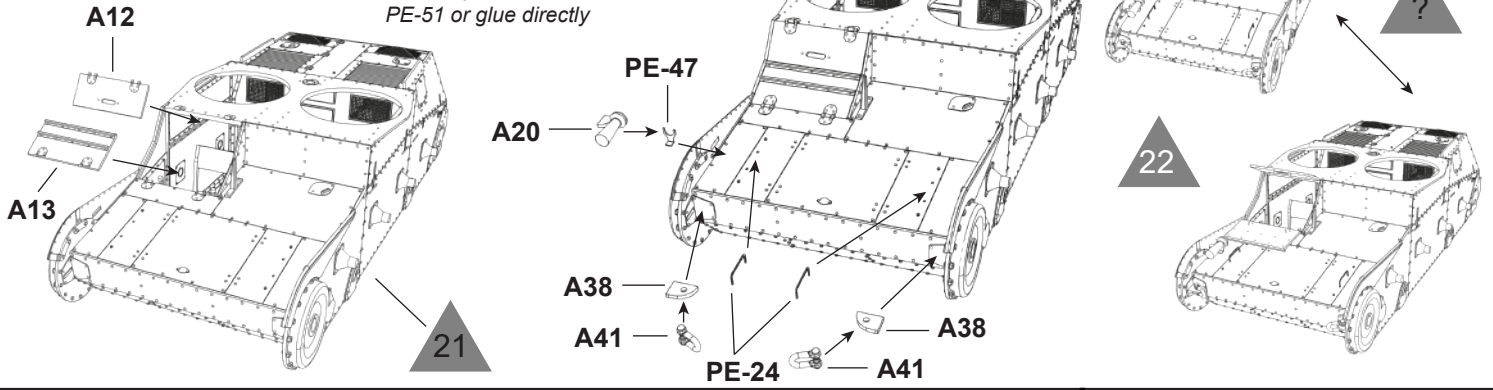
Etap 21
Step 21



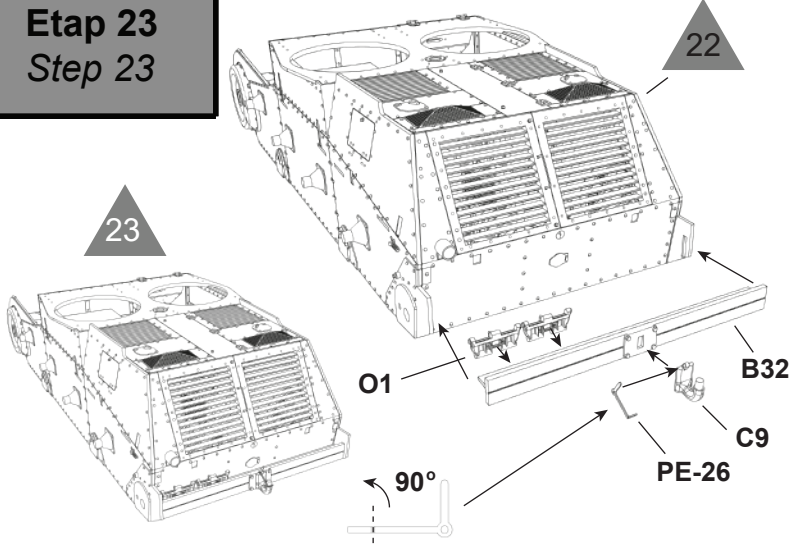
Etap 22
Step 22

Opcjonalnie: właz kierowcy otwarty
Optional: drivers hatch open

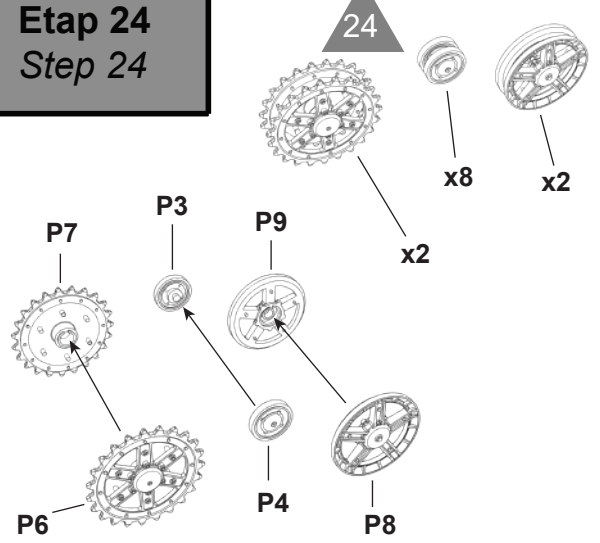
A20
Odetnij aby użyć części PE-51 lub przyklej bezpośrednio
Cut away to use element PE-51 or glue directly



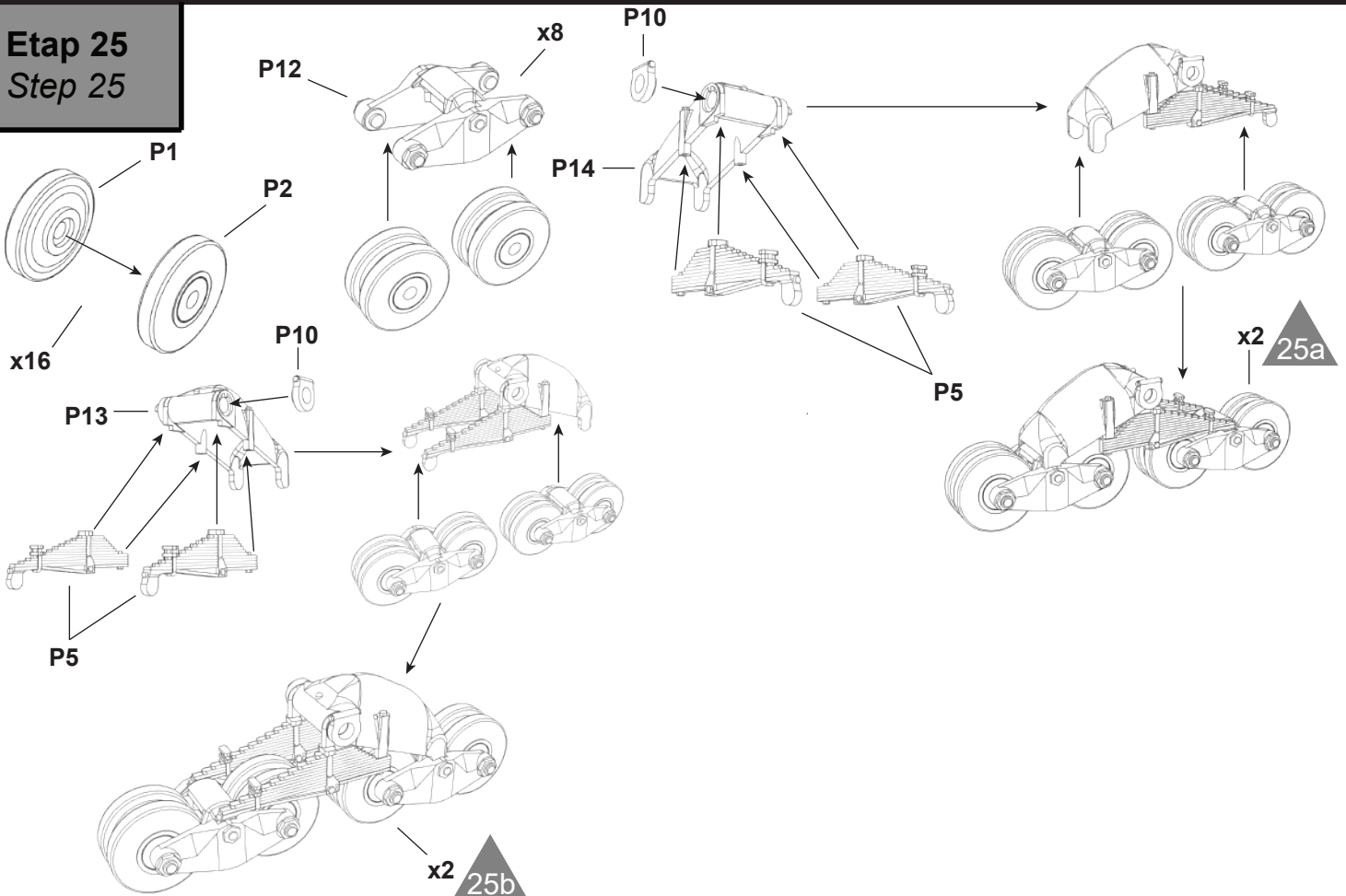
Etap 23
Step 23



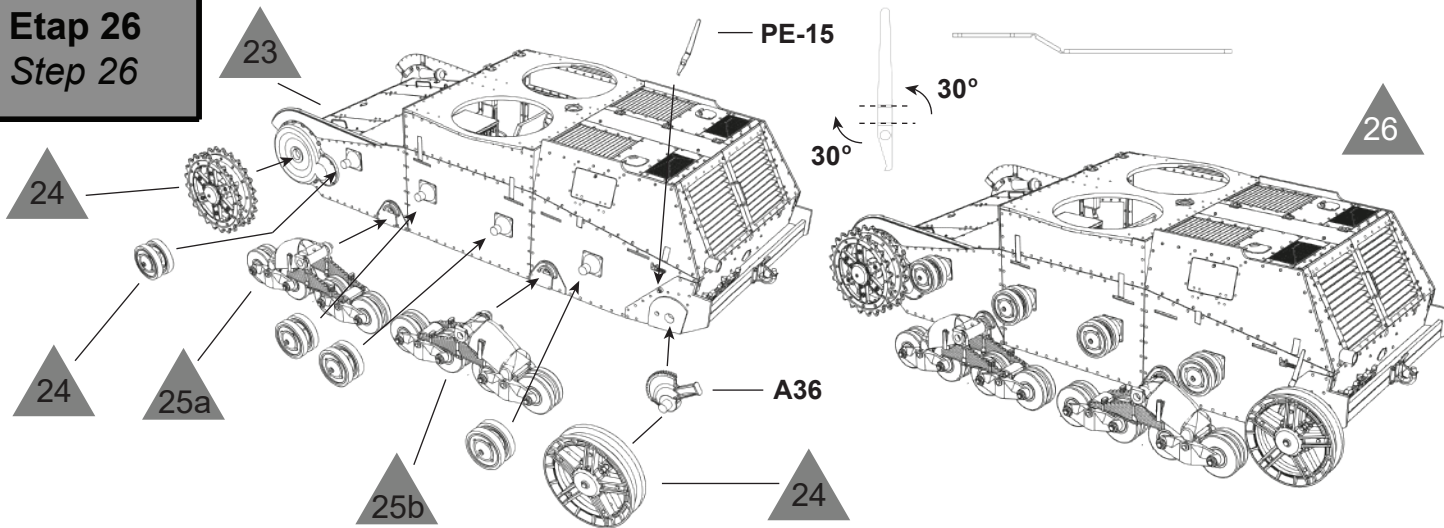
Etap 24
Step 24



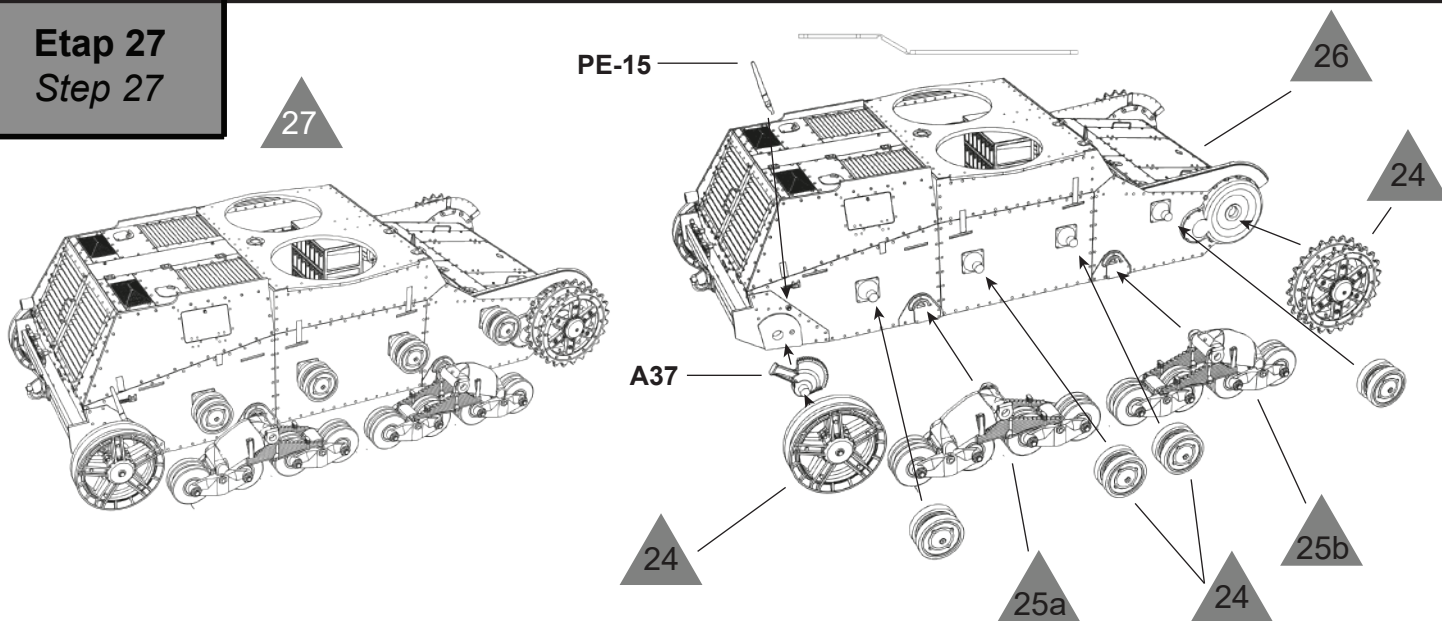
Etap 25
Step 25



Etap 26
Step 26

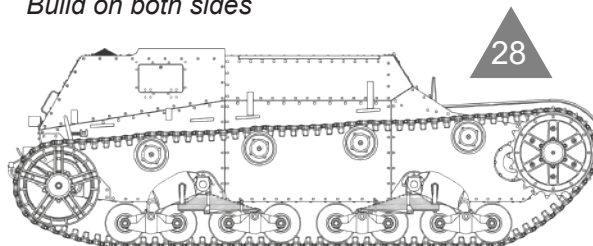
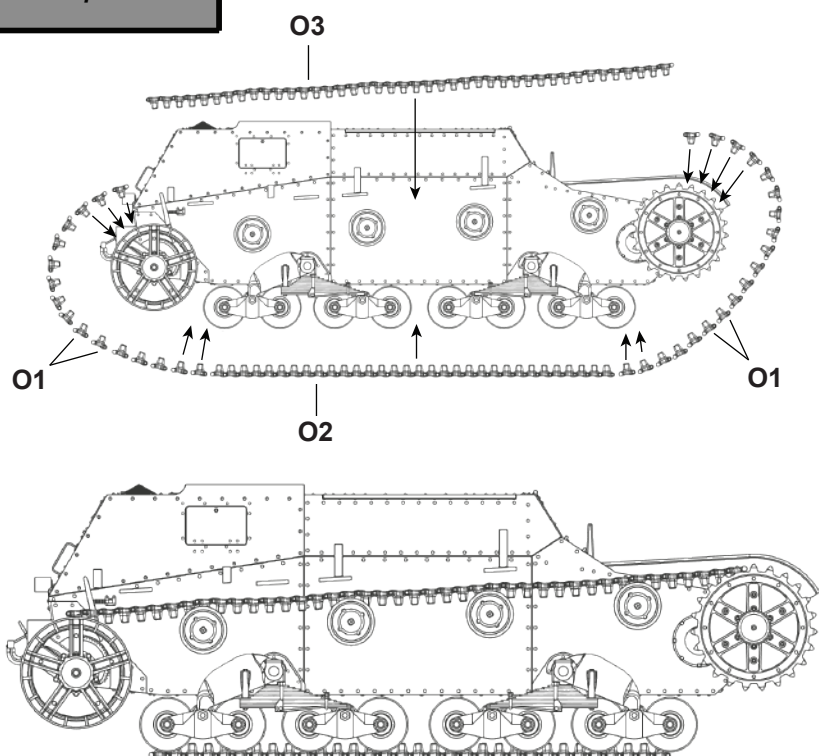


Etap 27
Step 27

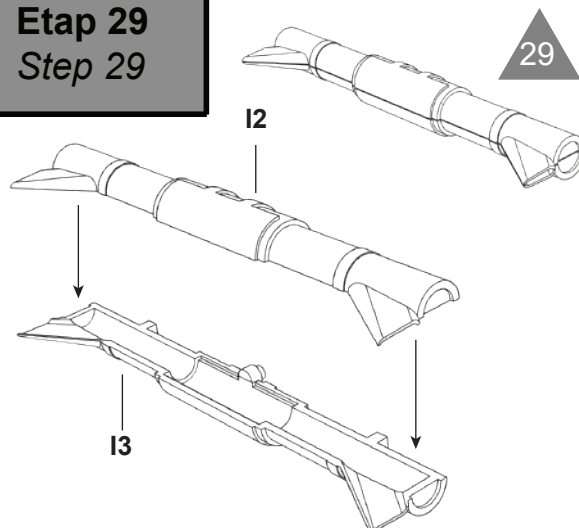


Etap 28
Step 28

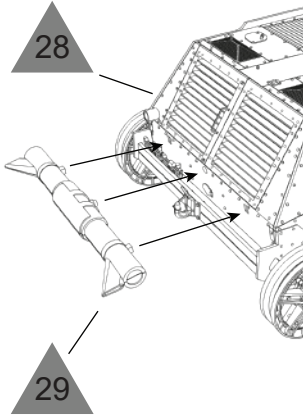
Wykonaj po obu stronach
Build on both sides



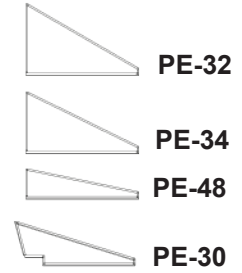
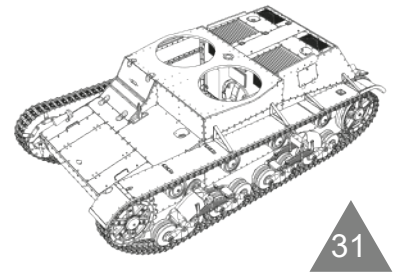
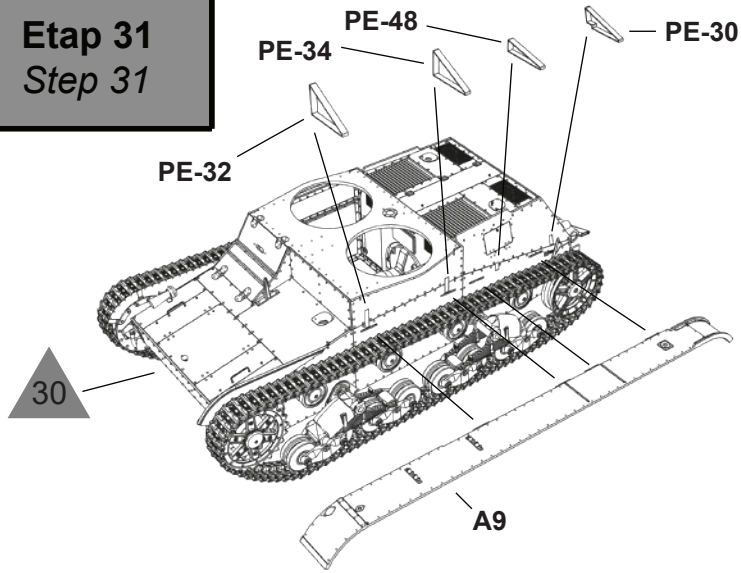
Etap 29
Step 29



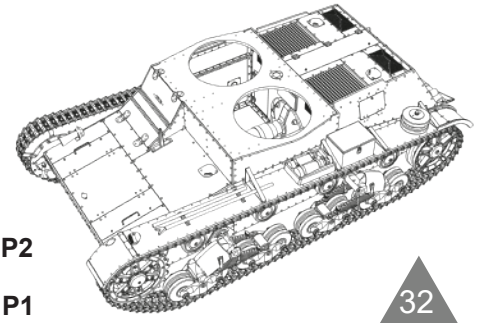
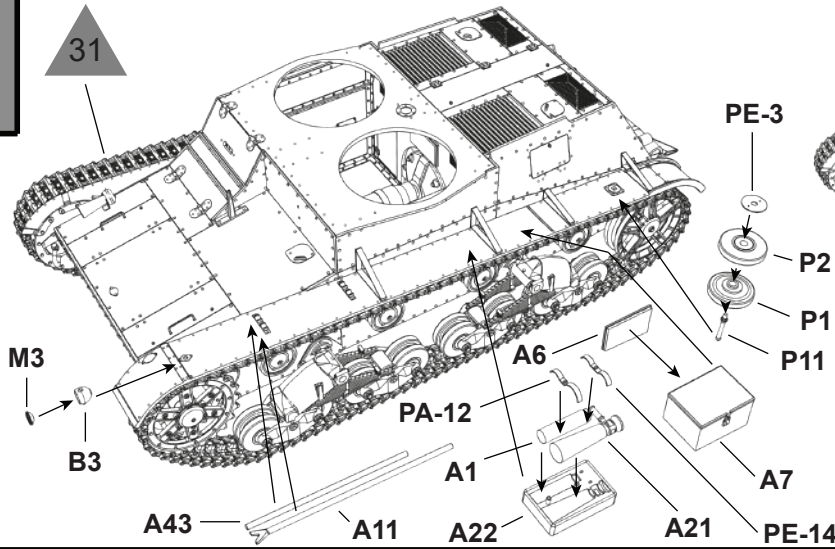
Etap 30
Step 30



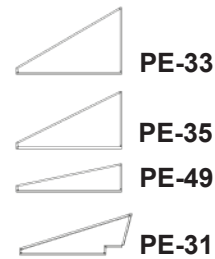
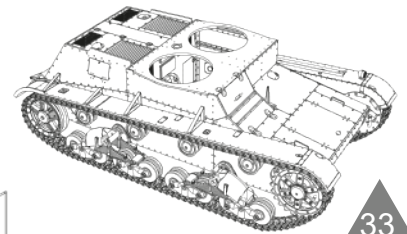
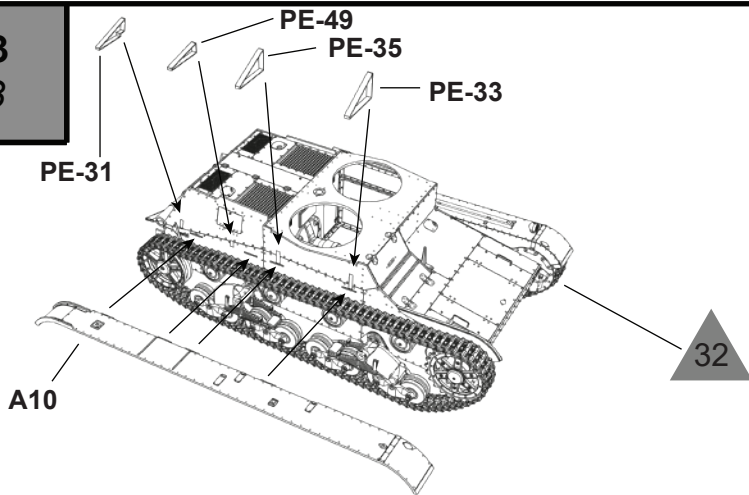
Etap 31
Step 31



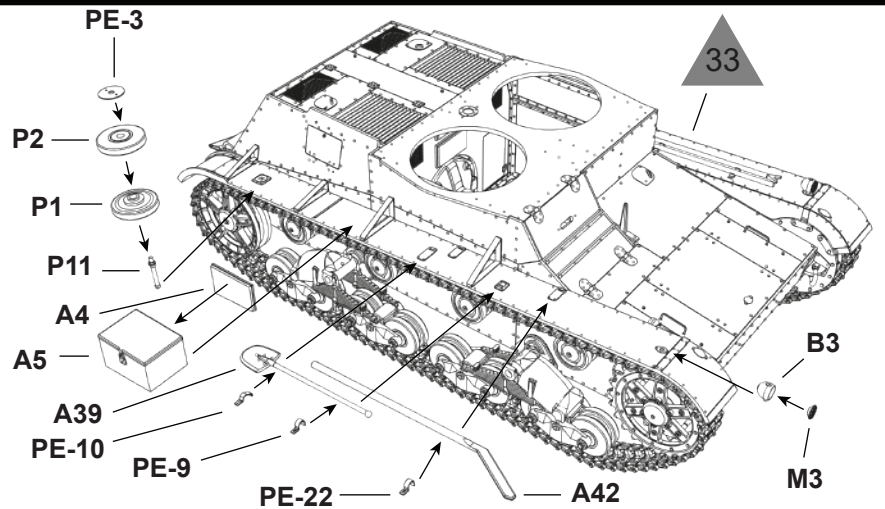
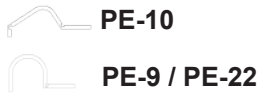
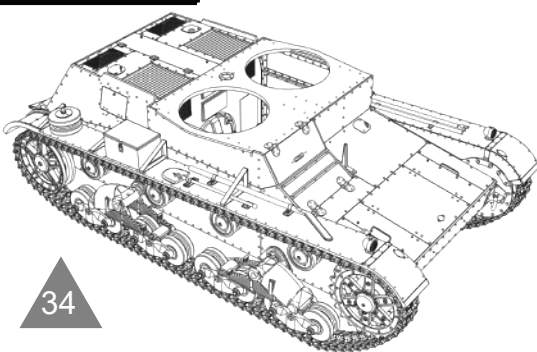
Etap 32
Step 32



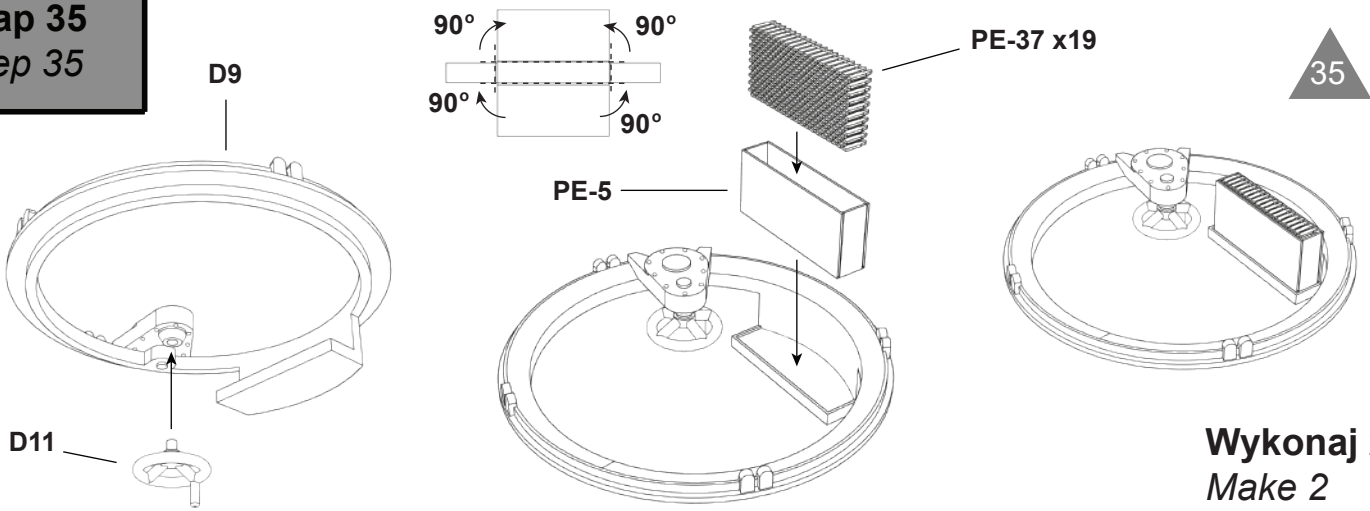
Etap 33
Step 33



Etap 34
Step 34

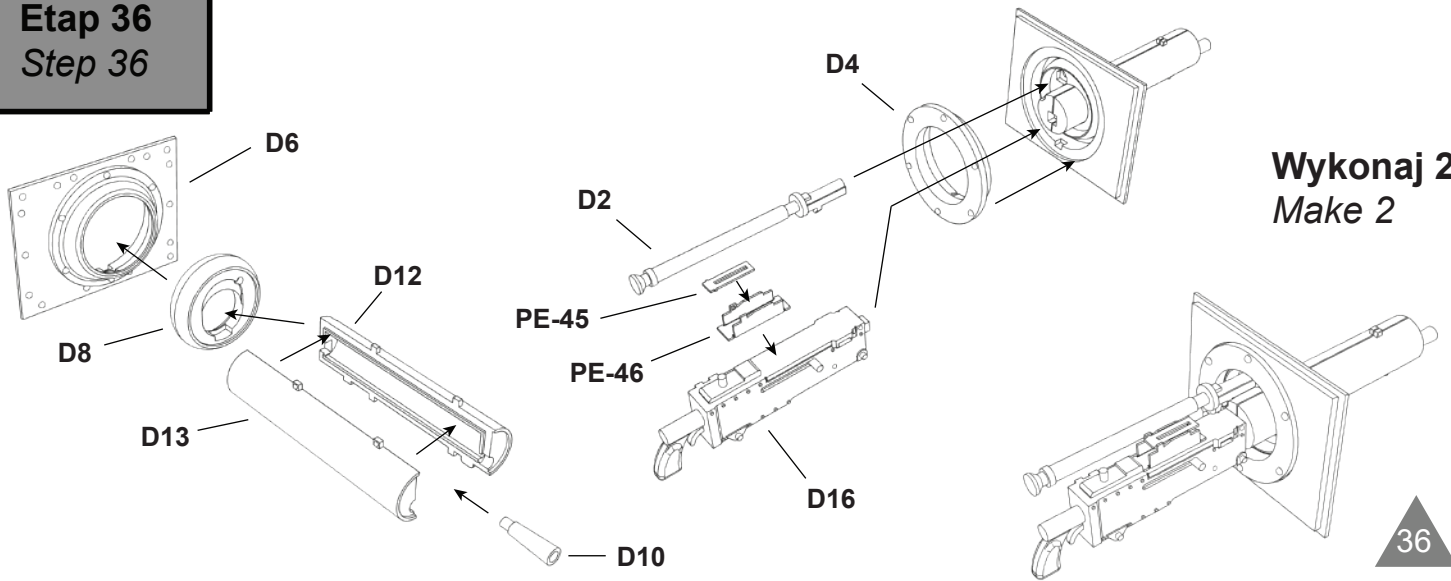


Etap 35
Step 35



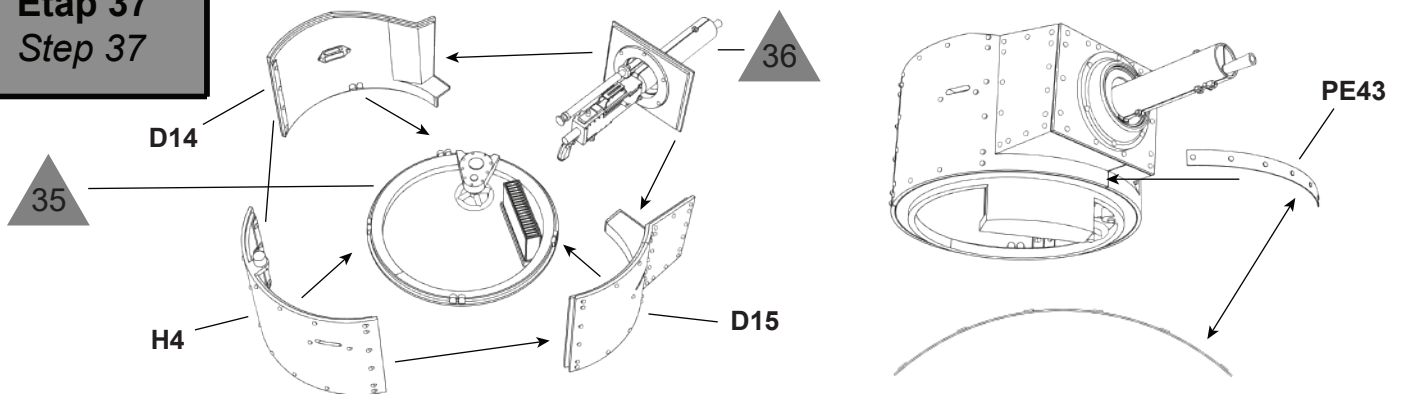
Wykonaj 2
Make 2

Etap 36
Step 36

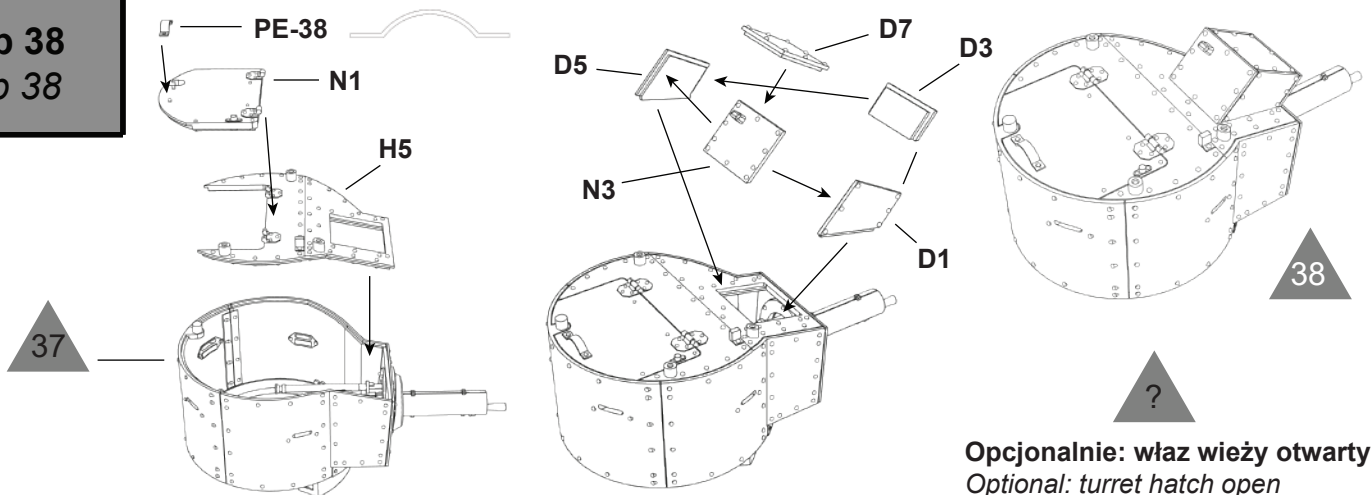


Wykonaj 2
Make 2

Etap 37
Step 37

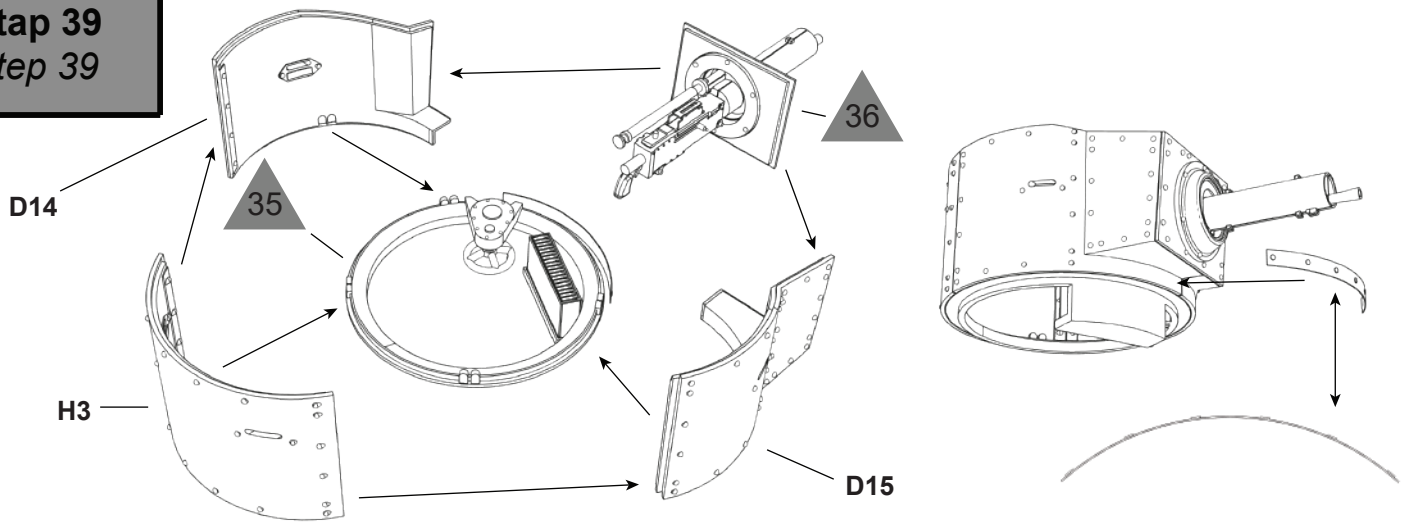


Etap 38
Step 38

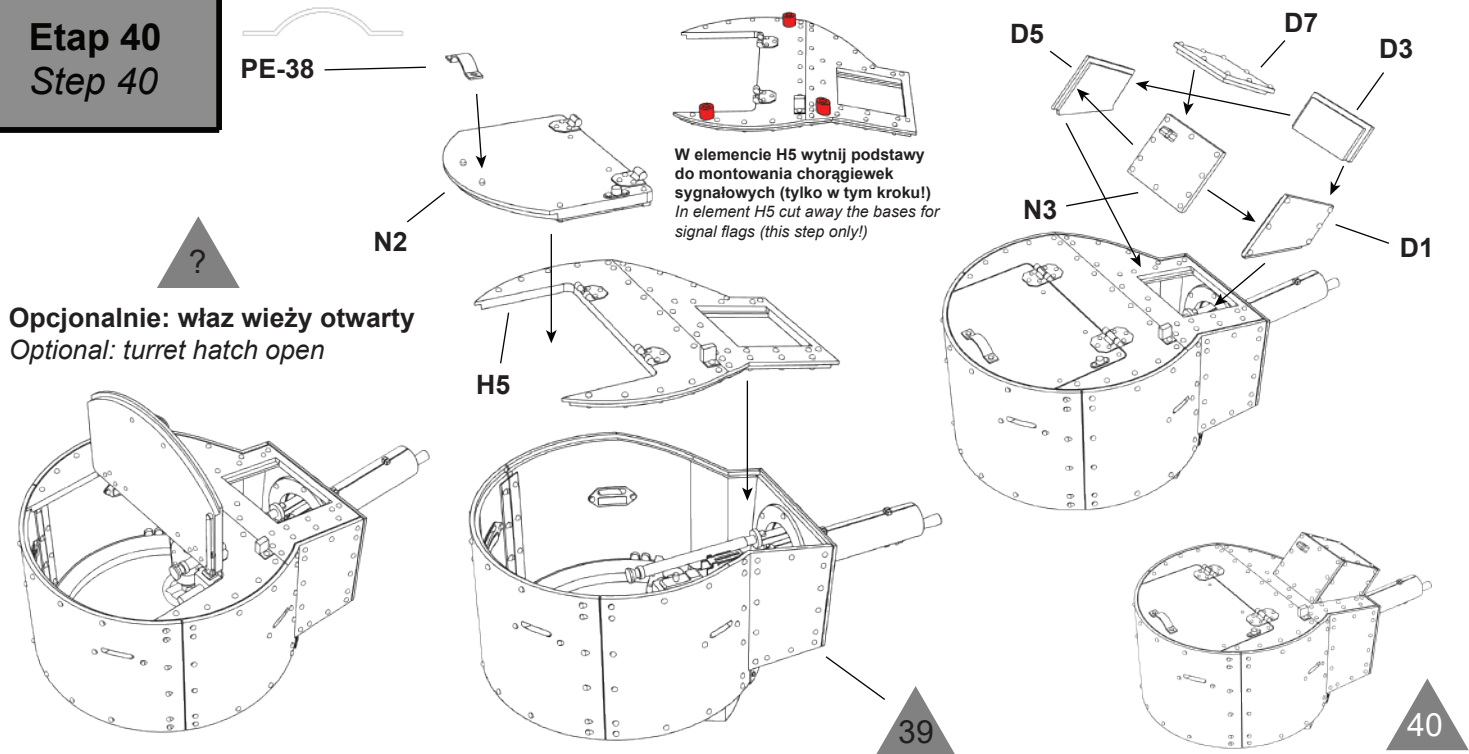


Opcjonalnie: właz wieży otwarty
Optional: turret hatch open

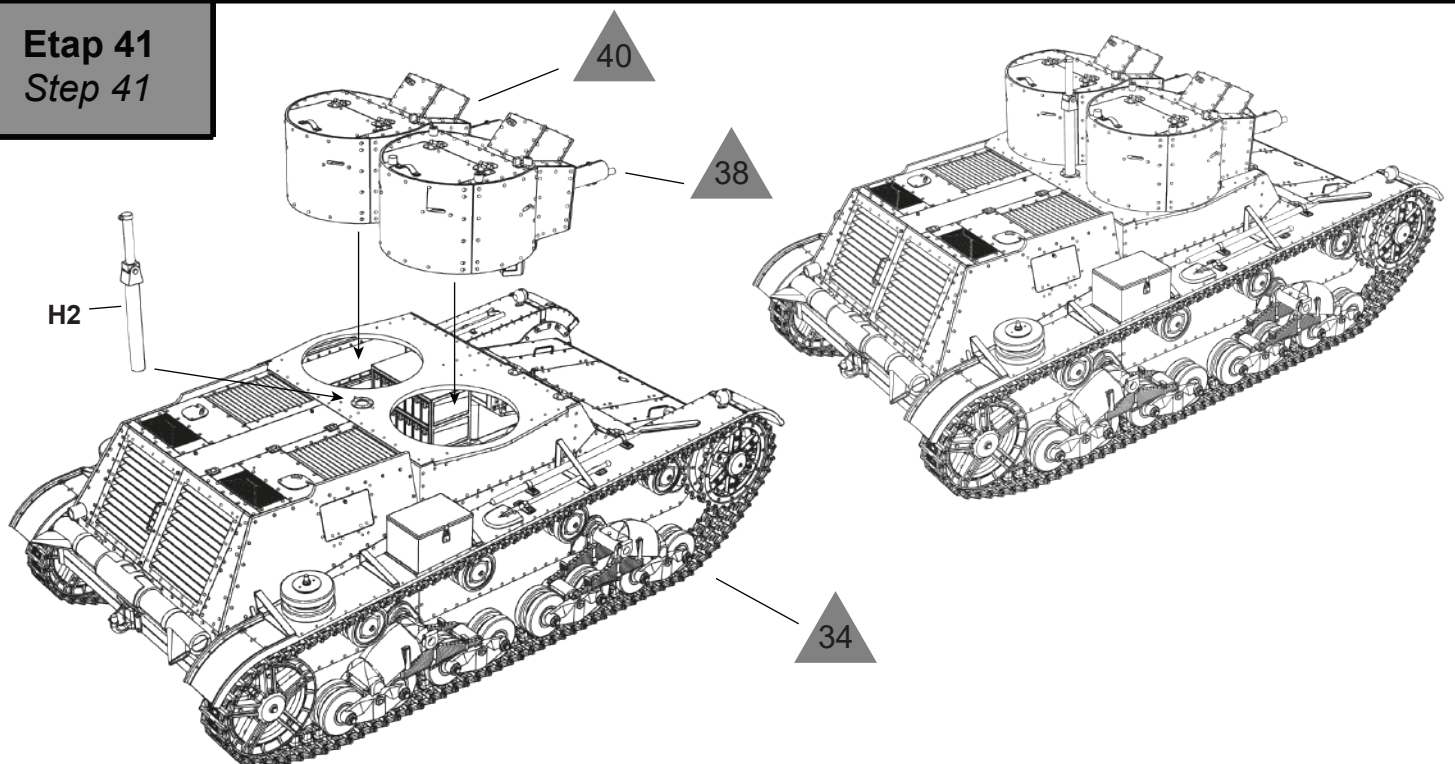
Etap 39
Step 39



Etap 40
Step 40



Etap 41
Step 41



Wykonany Model
Built Model

