


### Items Needed to Perform Updates on your Spektrum Smart Charger

- A Windows Operating System PC (Windows 7 and up)
- Spektrum SPMXCA100 Update Cable OR a USB to Micro USB cable
- Any Spektrum Smart Charger or the XBC100 Smart Checker

### How to Perform Update – Step by Step Guide

1. **See Page 2** - Find the latest update download for your Smart device and click the link to download

a. Click the download icon  in top right corner to download the .zip file

2. Once downloaded, please extract the .ZIP file to a location that you can easily find, we suggest the Desktop

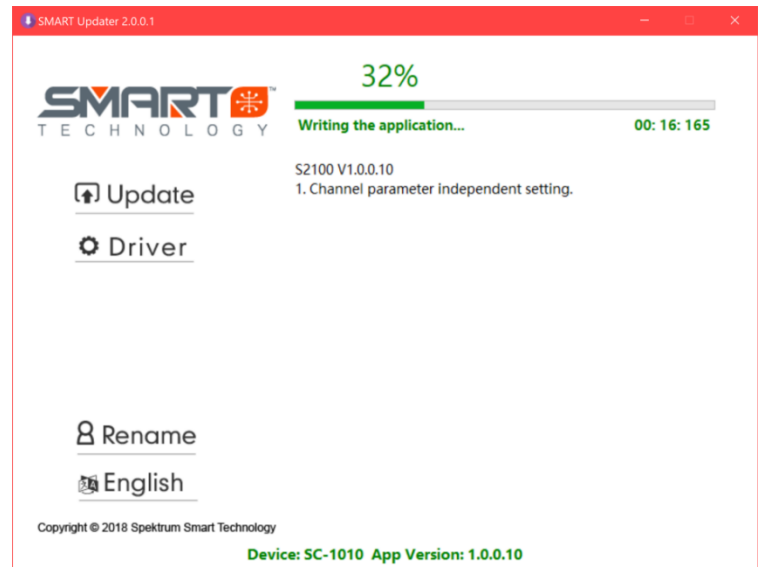
3. Locate the SCU.exe file and open/execute
4. You will be presented with this screen
5. Plug in power to your Smart Charger
6. Then plug in the XCA100 or USB Update cable into your PC and into the port on side of charger

7. The lower portion of the screen will then display the Device and firmware version currently on your Smart Charger

- *IF the included driver package fails to install download this alternative version*

[HERE – XCA100 Driver](#)

8. Click the **Update** button to install the update on your Smart Charger. A progress bar will appear on your computer screen and the screen/indicator on your Smart Charger will notify that an update is in progress.



***Wait until the update is complete and enjoy!***

---

Latest Smart Charger Firmware Downloads

---

**Smart AC powered chargers**

S2200 Spektrum Smart S2200 AC Charger (SPMXC2010) - A: V1.0.0.21 B: V2.0.0.7 - [Download](#)

S1200 Spektrum Smart S1200 **AC** Charger (SPMXC2020) – A: V1.0.0.32 B: V2.0.0.11 - [Download](#)

S1100 Spektrum Smart G2 S1100 AC Charger (SPMXC2080) – A: V1.0.0.34 B: V2.0.0.11 - [Download](#)

S2100 Spektrum Smart G2 S2100 AC Charger (SPMXC2000) – V1.1.0.20 B: V2.0.0.7 - [Download](#)

S1400 Spektrum Smart S1400 AC Charger (SPMXC2040) – A: V1.0.0.33 B: V2.0.0.11 - [Download](#)

S155 Spektrum Smart S155 AC Charger, 1x55W (SPMXC2050) – V1.0.0.16 - [Download](#)

S2100 Spektrum Smart S2100 AC Dual Port Charger (SPMXC1010) – V1.1.0.17 - [Download](#)

S1100 Spektrum Smart S1100 AC Charger (SPMXC1080) – V1.0.0.32 - [Download](#)

**Smart DC powered chargers**

S1200 Spektrum Smart S1200 **DC** Charger (SPMXC1000) – V3.1.0.13 - [Download](#)

S1500 Smart S1500 DC Charger (SPMXC1050) – V1.1.0.10 - [Download](#)

S150 Smart S150 AC/DC Charger (SPMXC1070) – V1.0.0.28 - [Download](#)

S120 Spektrum Smart S120 USB-C Charger (SPMXC1020) – V1.0.2.4 and V1.0.0.17 - [Download](#)

**Smart Checker**

XBC100 Smart Checker (SPMXBC100) - V1.0.0.21 - [Download](#)

[FIND ALL SMART DEVICE UPDATE FILES HERE \(including some back logs if you wish to downgrade\)](#)

 **WARNING** 

*IT IS EXTREMELY IMPORTANT THAT YOU CHOOSE THE CORRECT FIRMWARE FOR THE CHARGER YOU ARE UPDATING! INSTALLING THE INCORRECT FIRMWARE WILL CAUSE THE CHARGER TO BECOME INOPERABLE! ONE COMMON MISTAKE IS INSTALLING THE S1200 AC FIRMWARE ON THE S1200 DC, WHICH ARE 2 DIFFERENT MODELS.*

### Smart Charger Firmware Change Logs

---

*Please note – some firmware versions will have 2 available version numbers depending on your model's hardware specifications. For those models that have 2 different version numbers, they will be labeled Version A or B (ex. A: V1.0.0.21 B: 2.0.0.7). Functionally, these hardware and firmware variants are the same, but some of the internal components may be different depending on your version. The updater used for your Smart Charger will automatically recognize the hardware version and apply the correct update.*

#### **S2100 AC Smart Charger (SPMXC2000)**

A: V1.0.0.20 B: V2.0.0.7

- Fixes bug that disabled charging of standard non-Smart NiMH batteries
- Fixes backlight bug caused by volume control
- Modified lower voltage NiMH charging
- Battery Firmware Update for Spektrum Smart G1 and G2 batteries
  - This battery firmware update greatly decreases the energy consumption of the integrated Smart chip.
  - To install battery updates –
    - 1) Update your Smart Charger
    - 2) Plug in your Smart battery while charger is powered on
    - 3) A prompt will appear advising there is an update for your battery
    - 4) Select Yes to install the update and wait for update to complete

#### **S1100 AC Smart Charger (SPMXC2080)**

A: V1.0.0.34 B: V2.0.0.11

- Fixes bug that disabled charging of standard non-Smart NiMH batteries
- Fixes backlight bug caused by volume control
- Modified lower voltage NiMH charging
- Battery Firmware Update for Spektrum Smart G1 and G2 batteries
  - This battery firmware update greatly decreases the energy consumption of the integrated Smart chip.
  - To install battery updates –
    - 1) Update your Smart Charger
    - 2) Plug in your Smart battery while charger is powered on
    - 3) A prompt will appear advising there is an update for your battery
    - 4) Select Yes to install the update and wait for update to complete

#### **S2200 AC Smart Charger (SPMXC2010)**

A: V1.0.0.21 B: V2.0.0.7

- Fixes bug that disabled charging of standard non-Smart NiMH batteries
- Fixes backlight bug caused by volume control
- Modified lower voltage NiMH charging
- Battery Firmware Update for Spektrum Smart G1 and G2 batteries
  - This battery firmware update greatly decreases the energy consumption of the integrated Smart chip.
  - To install battery updates –
    - 1) Update your Smart Charger
    - 2) Plug in your Smart battery while charger is powered on
    - 3) A prompt will appear advising there is an update for your battery

03- March - 2023

4) Select Yes to install the update and wait for update to complete

V1.0.0.17

- Bug Fix – Balance lead disconnection error now works properly

V1.0.0.16

- Displays Battery and Charger temps in both F and C
- Added menu item: Auto Charge On/Off
- Expanded end voltage range for LiPo and LiHV battery types
  - LiPo = 4.10V to 4.20V | LiHV = 4.18V to 4.35V

### **S1200 AC Smart Charger (SPMXC2020)**

A: V1.0.0.32 B: V2.0.0.11

- Fixes bug that disabled charging of standard non-Smart NiMH batteries
- Fixes backlight bug caused by volume control
- Modified lower voltage NiMH charging
- Battery Firmware Update for Spektrum Smart G1 and G2 batteries
  - This battery firmware update greatly decreases the energy consumption of the integrated Smart chip.
  - To install battery updates –
    - 1) Update your Smart Charger
    - 2) Plug in your Smart battery while charger is powered on
    - 3) A prompt will appear advising there is an update for your battery
    - 4) Select Yes to install the update and wait for update to complete

V1.0.0.26

- Bug Fix – Balance lead disconnection error now works properly

V1.0.0.24

- Displays Battery and Charger temps in both F and C
- Added menu item: Auto Charge On/Off
- Expanded end voltage range for LiPo and LiHV battery types
  - LiPo = 4.10V to 4.20V | LiHV = 4.18V to 4.35V

### **S1400 AC Smart Charger (SPMXC2040)**

A: V1.0.0.33 B: V2.0.0.11

- Fixes bug that disabled charging of standard non-Smart NiMH batteries
- Fixes backlight bug caused by volume control
- Modified lower voltage NiMH charging
- Battery Firmware Update for Spektrum Smart G1 and G2 batteries
  - This battery firmware update greatly decreases the energy consumption of the integrated Smart chip.
  - To install battery updates –
    - 1) Update your Smart Charger
    - 2) Plug in your Smart battery while charger is powered on
    - 3) A prompt will appear advising there is an update for your battery
    - 4) Select Yes to install the update and wait for update to complete

V1.0.0.28

- Bug Fix – Balance lead disconnection error now works properly
- Bug Fix – 1S Battery charging now functions correctly

V1.0.0.26

- Displays Battery and Charger temps in both F and C
- Added menu item: Auto Charge On/Off
- Expanded end voltage range for LiPo and LiHV battery types

03- March - 2023

- o LiPo = 4.10V to 4.20V | LiHV = 4.18V to 4.35V

### **S1200 DC Smart Charger (SPMXC1000)**

#### V3.1.0.13

- Fixes bug that disabled charging of standard non-Smart NiMH batteries
- Fixes backlight bug caused by volume control
- Modified lower voltage NiMH charging
- Battery Firmware Update for Spektrum Smart G1 and G2 batteries
  - o This battery firmware update greatly decreases the energy consumption of the integrated Smart chip.
  - o To install battery updates –
    - 1) Update your Smart Charger
    - 2) Plug in your Smart battery while charger is powered on
    - 3) A prompt will appear advising there is an update for your battery
    - 4) Select Yes to install the update and wait for update to complete

#### V3.1.0.12

- Corrected Smart Auto Charging bug
- Improved low voltage tolerance in NiMH charging mode

#### V3.1.0.9

- Bug Fix – Balance lead disconnection error now works properly

#### V3.1.0.8

- Displays Battery and Charger temps in both F and C
- Added menu item: Auto Charge On/Off
- Expanded end voltage range for LiPo and LiHV battery types
  - o LiPo = 4.10V to 4.20V | LiHV = 4.18V to 4.35V
- Added menu options to adjust Input Power Limit (Wattage) and Minimum Input Power (Voltage)
  - o Located in System Settings Menu
- Fixed Battery C rating bug
- Fixed Smart NiMH charging bug

#### V3.1.0.5

- G2 Battery Update will push to battery firmware if out of date

#### V3.1.0.4

- Updated Generation 2 (G2) user interface
- New features included with G2 Interface
  - o Automatic Start with Smart Batteries
  - o Estimated Charge Time Remaining
  - o Charge and Balance Smart G2 Batteries

### **S2100 AC Smart Charger (SPMXC1010)**

#### V1.1.0.17

- Bug Fix – Balance lead disconnection error now works properly

#### V1.1.0.11

- Displays Battery and Charger temps in both F and C
- Added menu item: Auto Charge On/Off
- Expanded end voltage range for LiPo and LiHV battery types
  - o LiPo = 4.10V to 4.20V | LiHV = 4.18V to 4.35V
- Fixed Battery C rating bug
- Fixed Smart NiMH charging bug

#### V1.1.0.7

- G2 Battery Update will push to battery firmware if out of date

#### V1.1.0.3

03- March - 2023

- Updated Generation 2 (G2) user interface
- New features included with G2 Interface
  - Automatic Start with Smart Batteries
  - Estimated Charge Time Remaining
  - Charge and Balance Smart G2 Batteries

### **S1500 DC Smart Charger (SPMXC1050)**

#### V1.1.0.10

- Fixes bug that disabled charging of standard non-Smart NiMH batteries
- Fixes backlight bug caused by volume control
- Modified lower voltage NiMH charging
- Battery Firmware Update for Spektrum Smart G1 and G2 batteries
  - This battery firmware update greatly decreases the energy consumption of the integrated Smart chip.
  - To install battery updates –
    - 1) Update your Smart Charger
    - 2) Plug in your Smart battery while charger is powered on
    - 3) A prompt will appear advising there is an update for your battery
    - 4) Select Yes to install the update and wait for update to complete

#### V1.1.0.9

- Corrected Smart Auto Charging bug
- Improved low voltage tolerance in NiMH charging mode

#### V1.1.0.6

- Bug Fix – Balance lead disconnection error now works properly

#### V1.1.0.5

- Displays Battery and Charger temps in both F and C
- Added menu item: Auto Charge On/Off
- Expanded end voltage range for LiPo and LiHV battery types
  - LiPo = 4.10V to 4.20V | LiHV = 4.18V to 4.35V
- Added menu options to adjust Input Power Limit (Wattage) and Minimum Input Power (Voltage)
  - Located in System Settings Menu
- Fixed Battery C rating bug

#### V1.1.0.3

- G2 Battery Update will push to battery firmware if out of date

#### V1.1.0.2

- Updated Generation 2 (G2) user interface
- New features included with G2 Interface
  - Automatic Start with Smart Batteries
  - Estimated Charge Time Remaining
  - Charge and Balance Smart G2 Batteries

03- March - 2023

### **S1100 AC Smart Charger (SPMXC1080)**

V1.0.0.32

- Displays Battery and Charger temps in both F and C
- Added menu item: Auto Charge On/Off
- Expanded end voltage range for LiPo and LiHV battery types
  - o LiPo = 4.10V to 4.20V | LiHV = 4.18V to 4.35V

V1.1.0.3

- G2 Battery Update will push to battery firmware if out of date
- Fixes G2 balance lead required error

V1.0.0.29

- Improved G2 UI and Time Remaining Calculations

### **S155 AC Smart Charger (SPMXC2050)**

V1.1.0.16

- Fixes bug that disabled charging of standard non-Smart NiMH batteries

V1.1.0.15

- Modified lower voltage NiMH charging
- Battery Firmware Update for Spektrum Smart G1 and G2 batteries
  - o This battery firmware update greatly decreases the energy consumption of the integrated Smart chip.
  - o To install battery updates –
    - 1) Update your Smart Charger
    - 2) Plug in your Smart battery while charger is powered on
    - 3) A prompt will appear advising there is an update for your battery
    - 4) Select Yes to install the update and wait for update to complete

V1.0.0.14

- Improved low voltage tolerance in NiMH charging mode

V1.0.0.12

- Corrected the screen off bug when "Blacklight" changed to "Low"

### **S150 AC/DC Smart Charger (SPMXC1070)**

V1.0.0.28

- NiMh mode only charges Spektrum Smart NiMh batteries

V1.0.0.26

- Improved NiMH Charging Calculations
- G2 Battery Charging

### **S120 USB Powered Smart Charger (SPMXC1020)**

V1.02.4 or V1.0.0.17 (depending on hardware version)

- Improved low voltage tolerance in NiMH charging mode

V1.0.2.2

- Improved NiMH Charging Calculations
- G2 Battery Charging

# Spektrum Smart Charger

## Update instructions, Download Links and Change Log



03- March - 2023

### XBC100 Smart Checker (SPMXBC100)

V1.0.0.19

- Now displays connected Smart Batteries Firmware Version on main dashboard
- Battery Firmware Update for Spektrum Smart G1 and G2 batteries
  - o This battery firmware update greatly decreases the energy consumption of the integrated Smart chip.
  - o To install battery updates –
    - 1) Update your Smart Checker
    - 2) Plug in your Smart battery while charger is powered on
    - 3) A prompt will appear advising there is an update for your battery
    - 4) Select Yes to install the update and wait for update to complete

V1.0.0.19

- Displays Battery temps in both F and C

V1.0.0.18

- Fixed voltage miscalculation
- G2 Battery Update will push to battery firmware if out of date