



estesrockets.com

CHEROKEE-E™

2408



MODEL ROCKET INSTRUCTIONS

KEEP FOR FUTURE REFERENCE

IMPORTANT: Please record date found on decal and keep for future reference. _____

READ ALL INSTRUCTIONS. Make sure you have all parts and supplies. Test fit all parts before applying glue. Sand as necessary for precision assembly. Product color and shape may vary.

SUPPLIES / MATERIALES / FOURNITURES



SCISSORS



PENCIL



RULER



FINE SANDPAPER



YELLOW GLUE



HOBBY KNIFE



MASKING TAPE



CLEAR TAPE



PRIMER (WHITE)



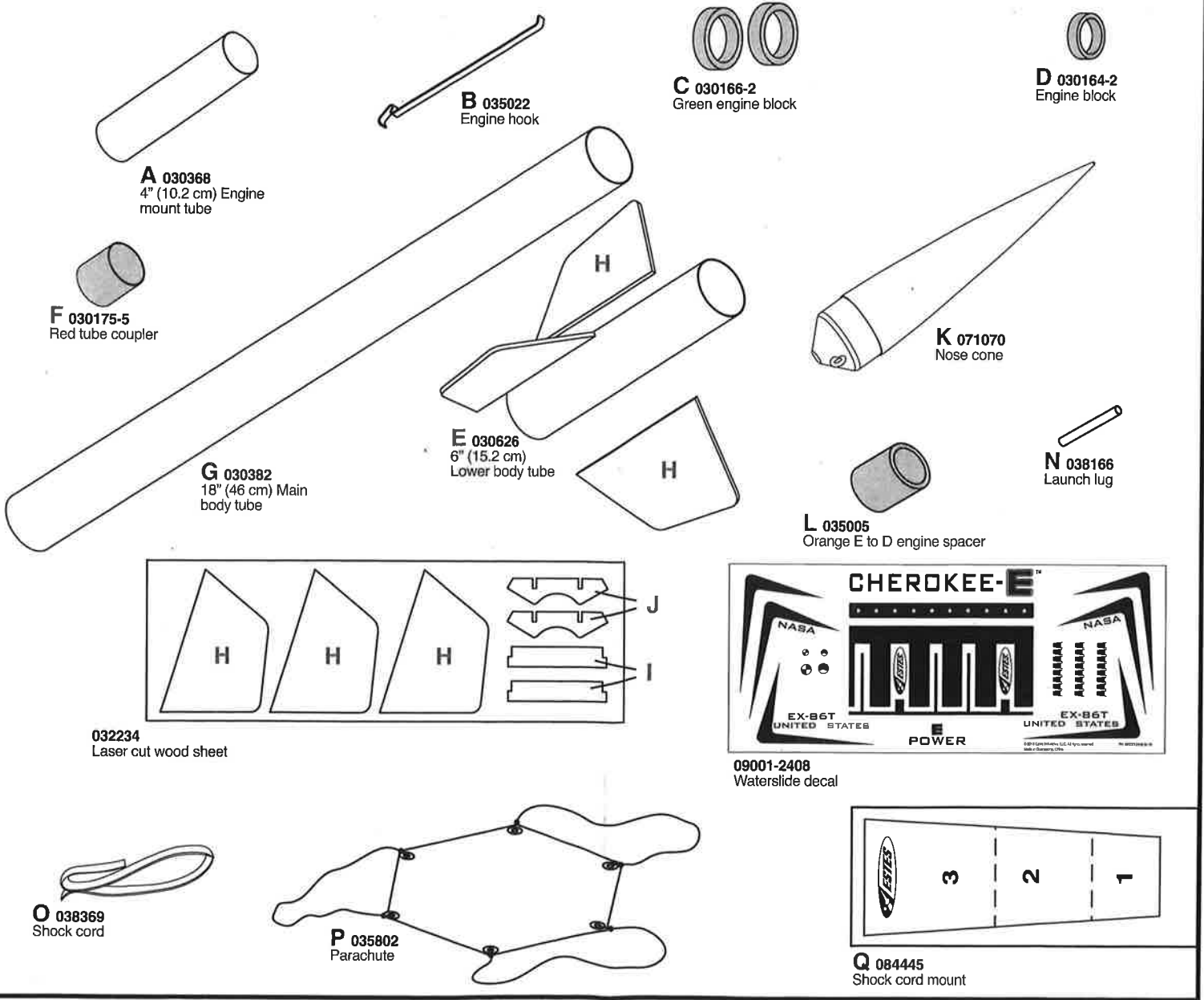
PAINT (WHITE, BLUE)



CLEAR COAT (OPTIONAL)

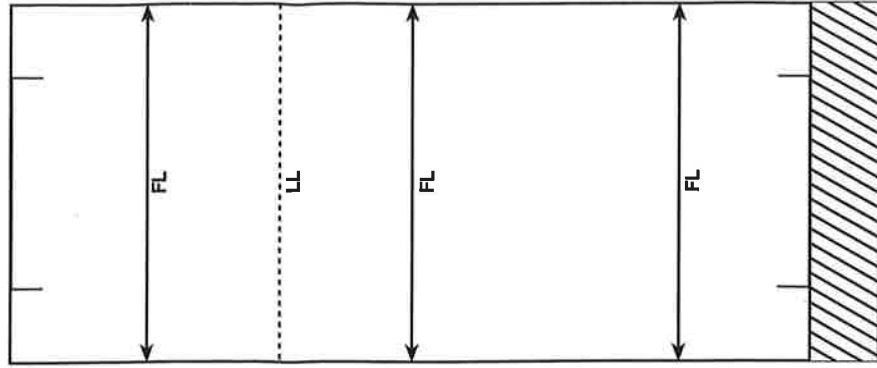


SAND BLOCK



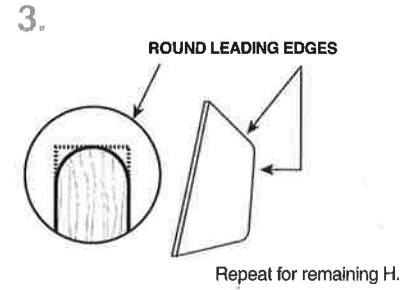
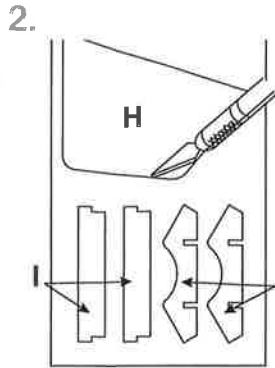
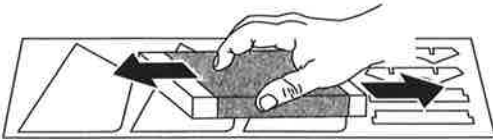
TUBE MARKING GUIDE & SHOCK CORD MOUNT

Make a copy if you want to keep instructions.

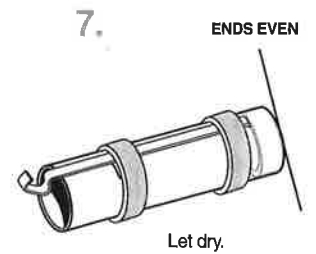
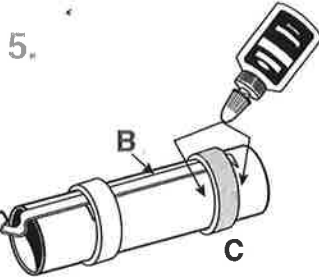
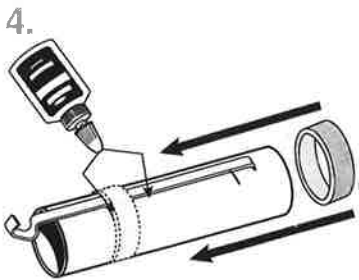
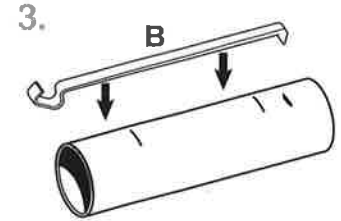
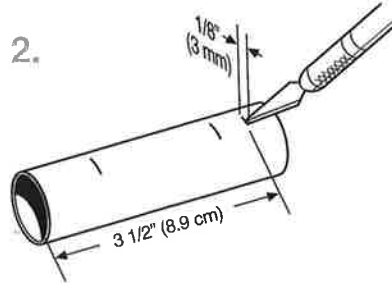
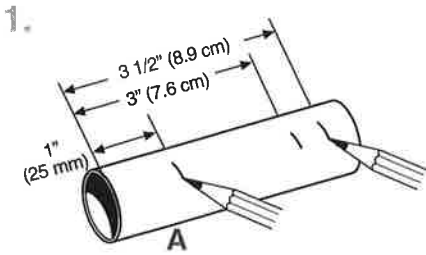


PREPARE FINS

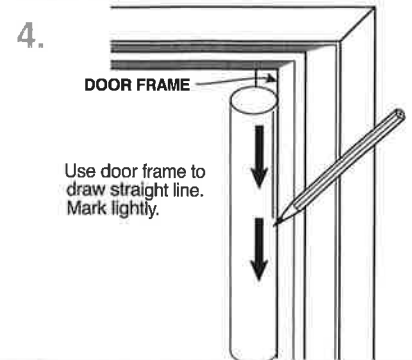
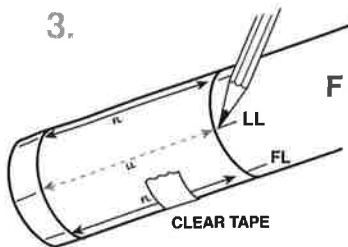
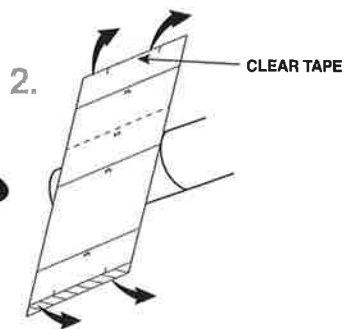
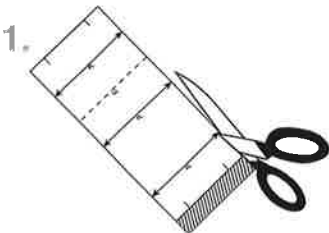
1. Sand both sides.



ASSEMBLE ENGINE MOUNT



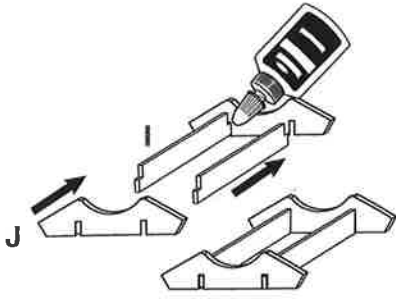
MARK TUBES



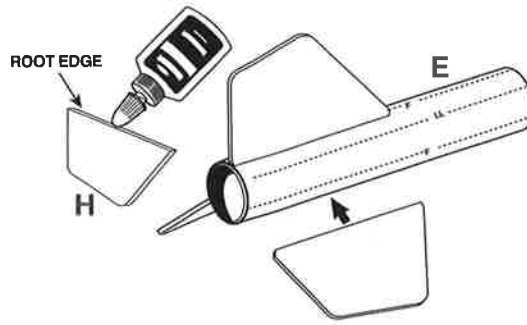
NOTE:
Cut from above.

ATTACH FINS

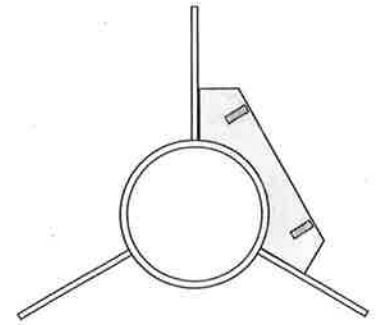
1. Glue I and J together to make a fin alignment tool. Let dry.



2. Apply thin layer of glue to edge of H. Let dry a few minutes. Apply second layer. Attach to E on fin line. Let dry.

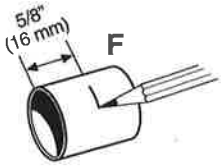


3. Repeat for all fins. Check alignment using fin alignment tool. Let dry.

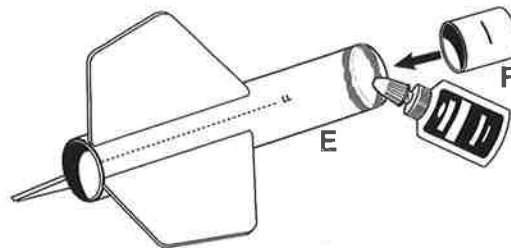


JOIN BODY TUBES

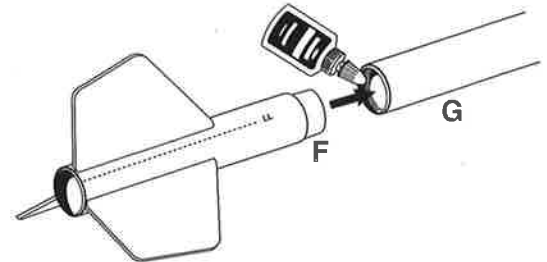
- 1.



2. Insert F to mark. Let dry.

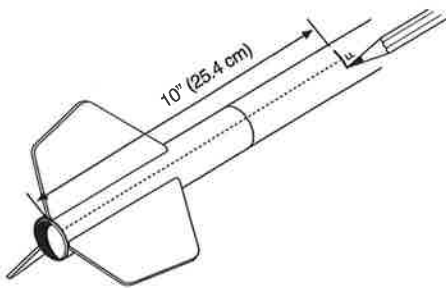


3. Let dry.

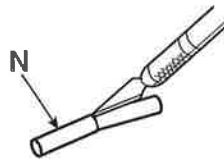


ATTACH LAUNCH LUG

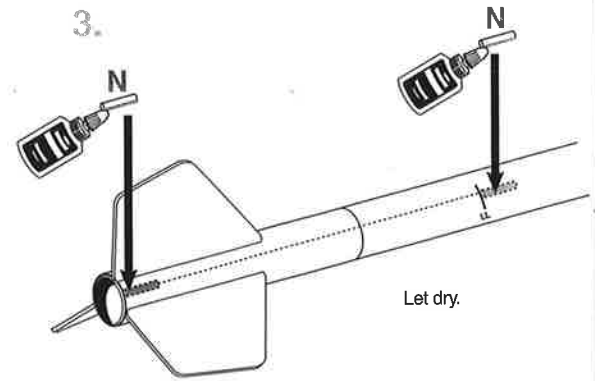
1. Extend LL Mark.



2. Cut N in half.

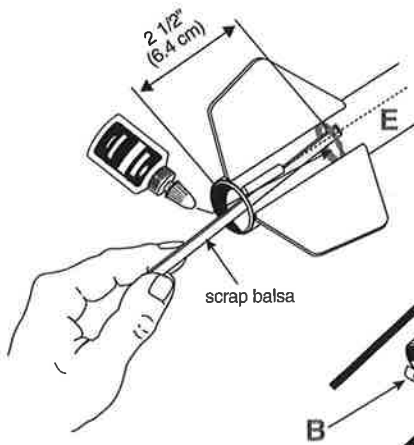


- 3.

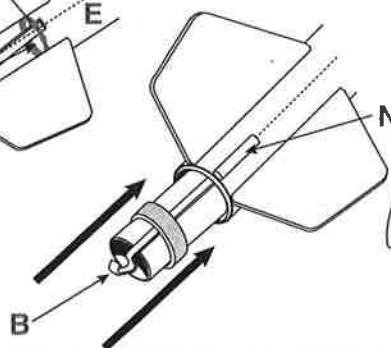


INSTALL ENGINE MOUNT

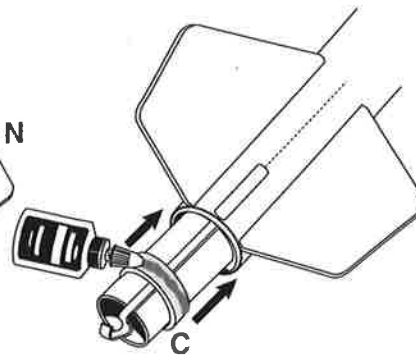
1. Apply glue inside E.



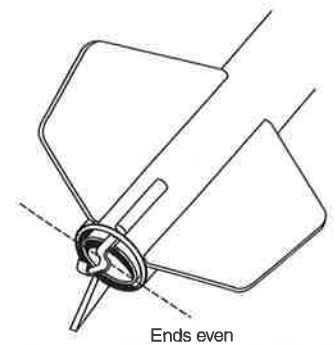
2. Slide engine mount assembly half way in. Align B with N.



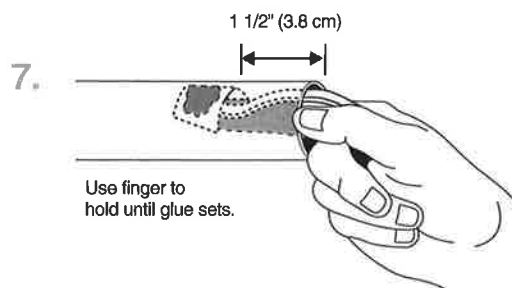
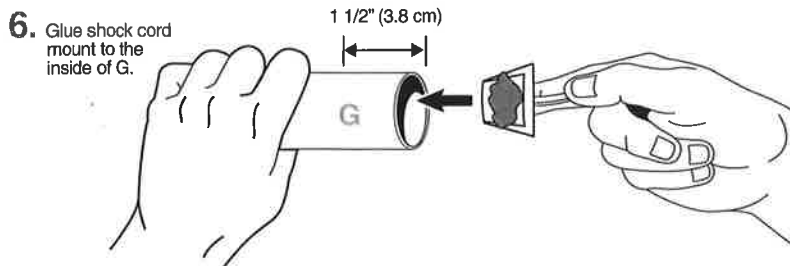
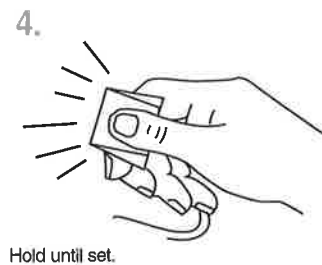
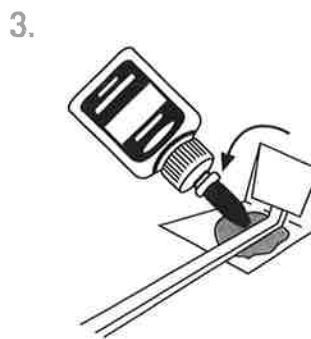
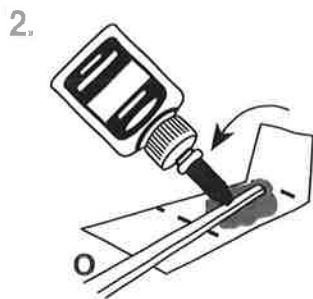
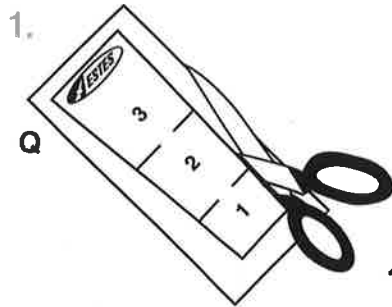
3. Apply glue around C. Slide engine mount assembly into E until ends are even. Let dry.



- 4.

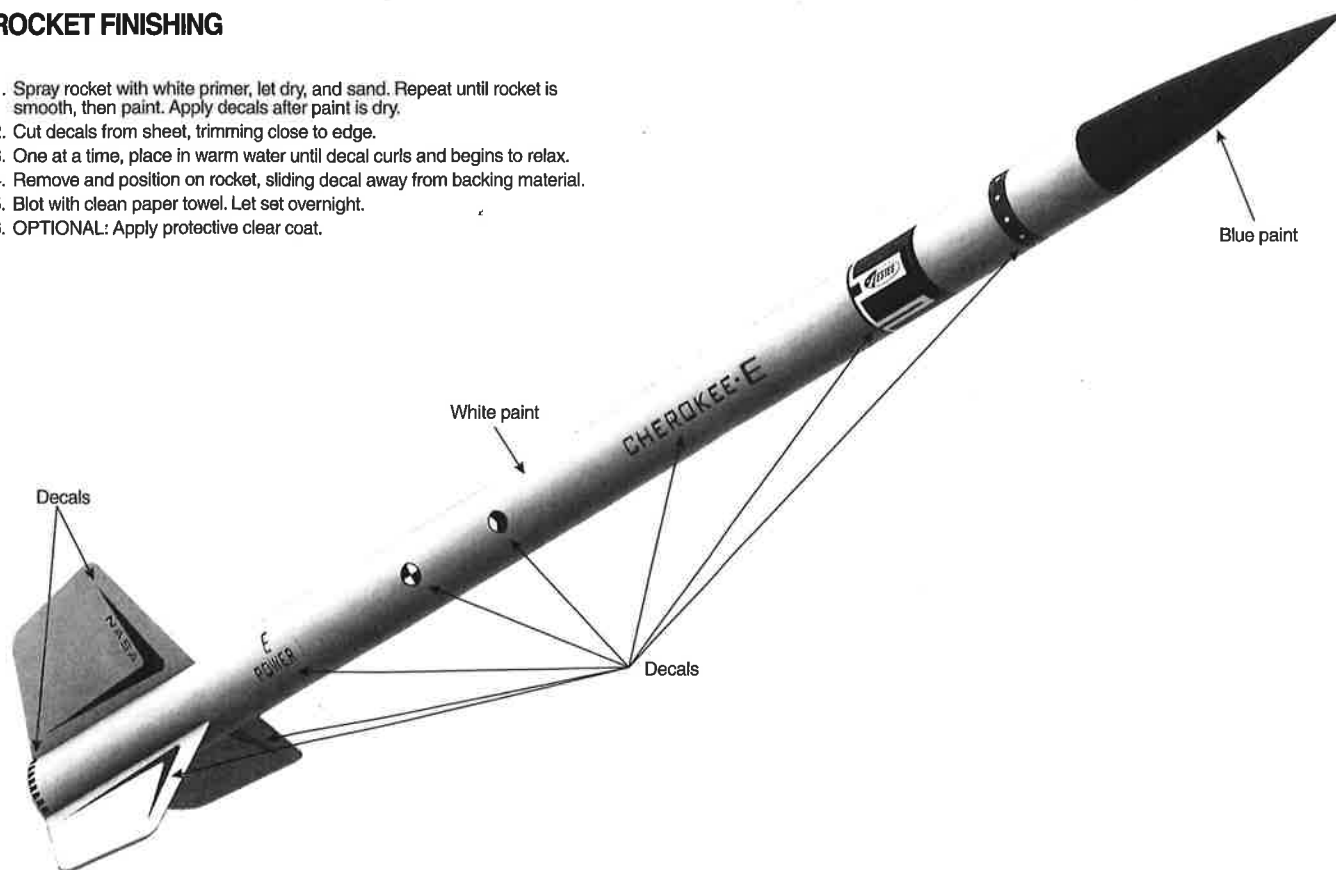


INSTALL SHOCK CORD

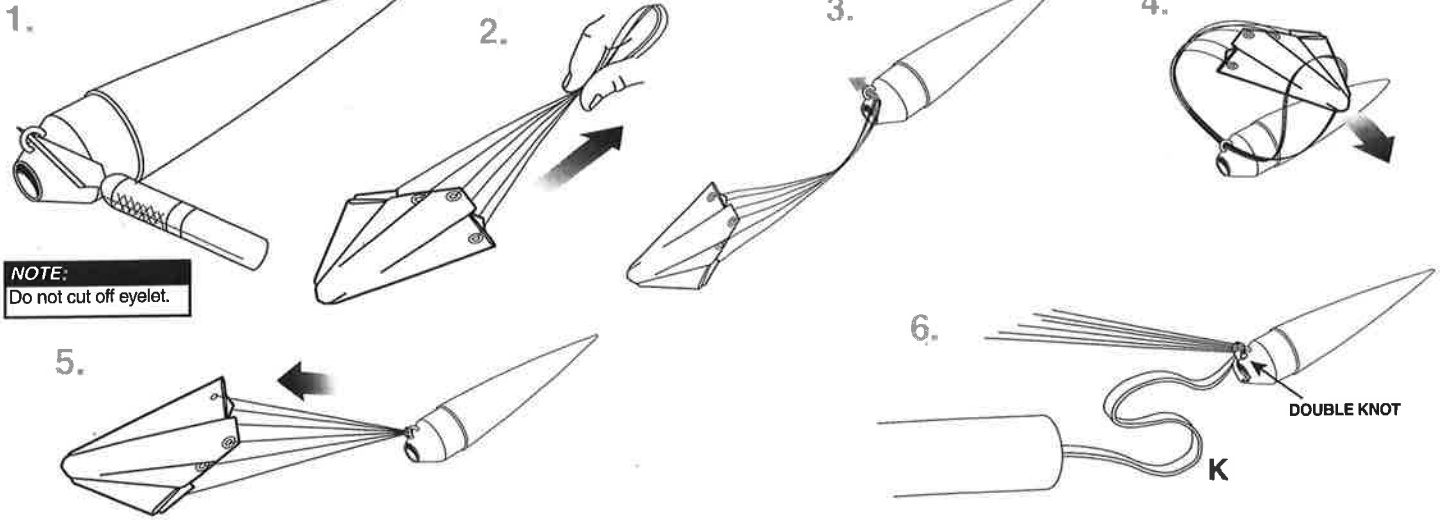


ROCKET FINISHING

1. Spray rocket with white primer, let dry, and sand. Repeat until rocket is smooth, then paint. Apply decals after paint is dry.
2. Cut decals from sheet, trimming close to edge.
3. One at a time, place in warm water until decal curls and begins to relax.
4. Remove and position on rocket, sliding decal away from backing material.
5. Blot with clean paper towel. Let set overnight.
6. OPTIONAL: Apply protective clear coat.

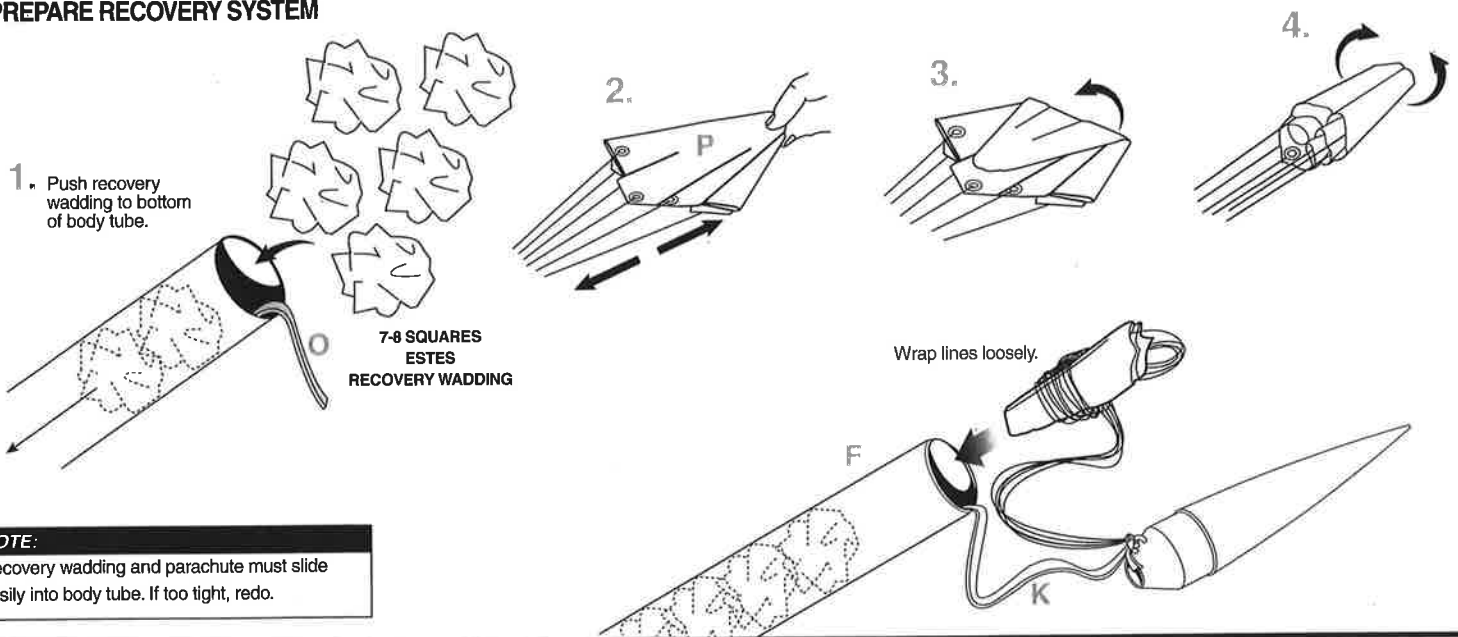


PREPARE RECOVERY SYSTEM



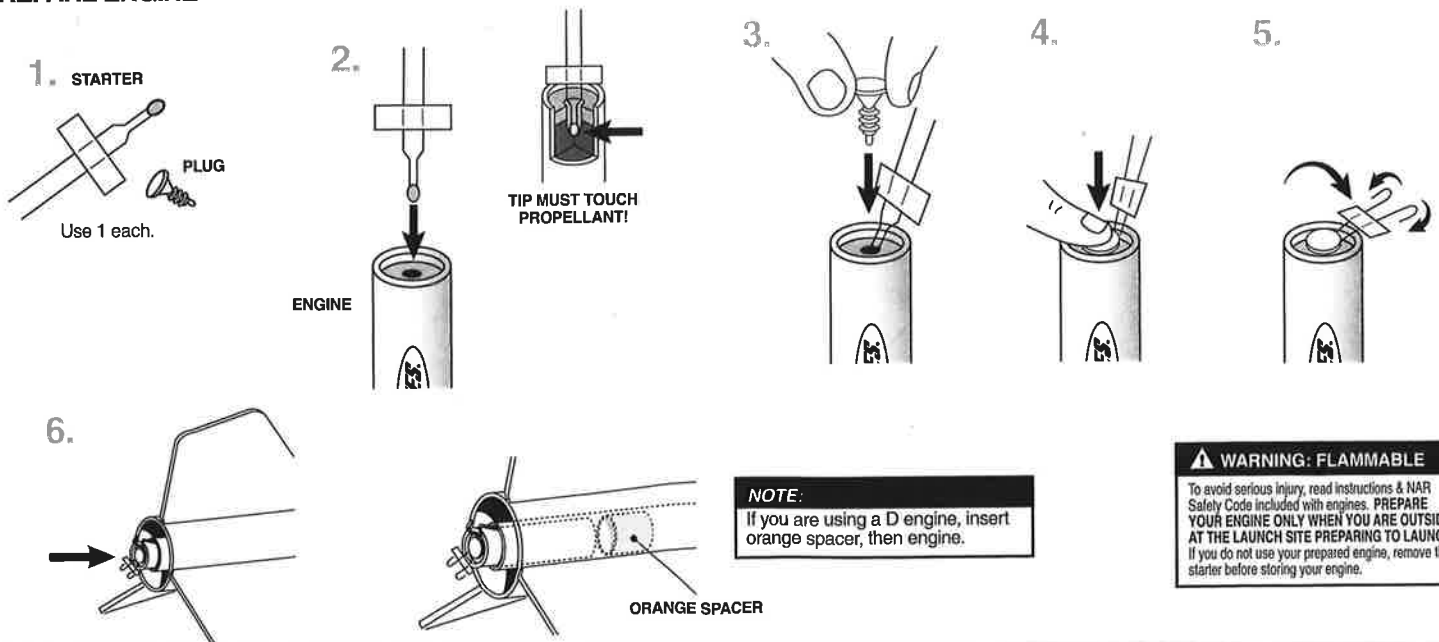
NOTE:
Do not cut off eyelet.

PREPARE RECOVERY SYSTEM



NOTE:
Recovery wadding and parachute must slide easily into body tube. If too tight, redo.

PREPARE ENGINE

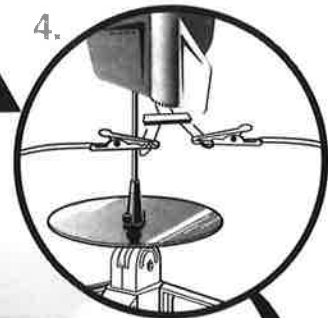
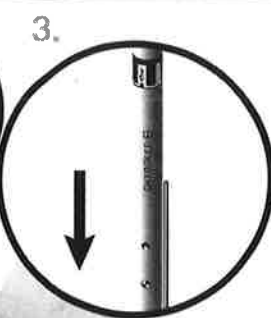


NOTE:
If you are using a D engine, insert orange spacer, then engine.

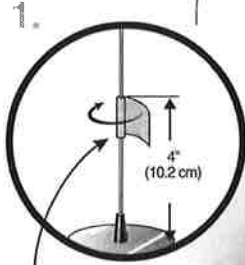
WARNING: FLAMMABLE

To avoid serious injury, read instructions & NAR Safety Code included with engines. **PREPARE YOUR ENGINE ONLY WHEN YOU ARE OUTSIDE AT THE LAUNCH SITE PREPARING TO LAUNCH.** If you do not use your prepared engine, remove the starter before storing your engine.

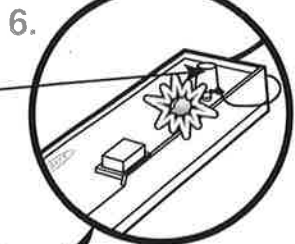
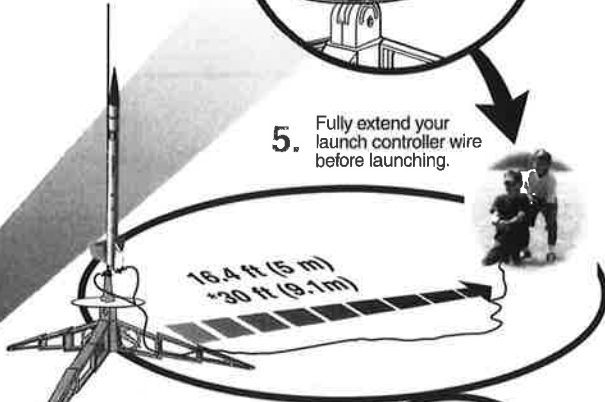
NOTE:
Key always out until final countdown!

5. Fully extend your launch controller wire before launching.



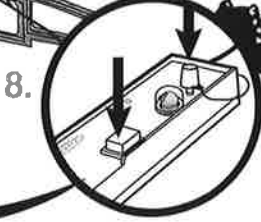
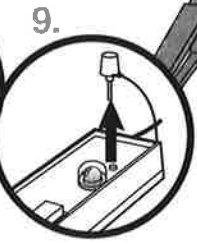
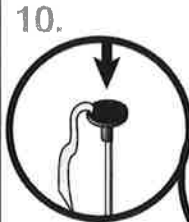
MASKING TAPE



Insert key, push down hard. Bulb will light.



While holding key down FIRMLY, press launch button until LIFTOFF!



- ESTES LAUNCH SUPPLIES NEEDED (Sold Separately)**
- Launch Pad
 - Requires 3/16 in (5 mm) Maxi™ Rod
 - Launch Controller
 - Recovery Wadding
 - Starters (with engines)
 - Plugs (with engines)
 - Estes® Engines: D12-5 (first launch), D12-7, E12-6*

* E Engines require E Launch Controller.

PRECAUTIONS



NAR SAFETY CODE



NO DRY GRASS OR WEEDS

PRE-LAUNCH CHECK For safety, never launch a damaged rocket. Check the rocket's body, nose cone and fins. Also, check the engine mount, recovery system and launch lug(s). Repair any damage before launching the rocket.
FLYING YOUR ROCKET Choose a large field (500 ft [152 m] square) free of dry weeds and brown grass. The larger the launch area, the better your chance of recovering your rocket. Football fields and playgrounds are great. Launch only with little or no wind and good visibility. Always follow the National Association of Rocketry (NAR) SAFETY CODE.
MISFIRES TAKE THE KEY OUT OF THE CONTROLLER. WAIT ONE MINUTE BEFORE GOING NEAR THE ROCKET! Disconnect the starter clips and remove the engine. Take the plug and starter out of the engine. If the starter has burned, it worked but did not ignite the engine because it was not touching the propellant inside the engine. Put a new starter all the way inside the engine without bending it. Push the plug in place. Repeat the steps under Countdown and Launch.

